

Crestline Village Water District
Change in Water Production - Cubic Feet
2020 vs 2024-25

2024-25 Production	Feb	Mar	Apr	May	Jun	Jul	Aug	Sep	Oct	Nov	Dec	Jan	Feb	Average
Wells	1,771,386	1,744,554	1,954,539	1,886,560	1,777,983	2,026,665	1,687,949	1,625,304	1,720,212	1,516,514	1,664,637	1,329,313	1,408,245	1,695,206
CLAWA	154,105	203,128	24,733	397,380	723,864	1,102,981	1,112,309	957,335	910,316	498,006	526,897	575,008	435,376	622,278
Total	1,925,491	1,947,682	1,979,272	2,283,940	2,501,847	3,129,646	2,800,258	2,582,639	2,630,528	2,014,520	2,191,534	1,904,321	1,843,621	2,317,484
2020 Production														
Wells	1,606,207	1,837,581	1,922,894	1,936,457	2,069,986	1,740,467	1,863,039	1,724,448	1,520,142	1,573,711	1,397,987	1,790,808	1,606,207	1,748,644
CLAWA	340,374	230,214	152,380	712,554	978,249	1,827,648	1,490,709	1,410,963	1,269,277	709,571	795,000	357,741	340,374	856,223
Total	1,946,581	2,067,795	2,075,274	2,649,011	3,048,235	3,568,115	3,353,748	3,135,411	2,789,419	2,283,282	2,192,987	2,148,549	1,946,581	2,604,867
Change in Production														
Wells	165,179	(93,027)	31,645	(49,897)	(292,003)	286,198	(175,090)	(99,144)	200,070	(57,197)	266,650	(461,495)	(197,962)	(53,438)
CLAWA	(186,269)	(27,086)	(127,647)	(315,174)	(254,385)	(724,667)	(378,400)	(453,628)	(358,961)	(211,565)	(268,103)	217,267	95,002	(233,946)
Total	(21,090)	(120,113)	(96,002)	(365,071)	(546,388)	(438,469)	(553,490)	(552,772)	(158,891)	(268,762)	(1,453)	(244,228)	(102,960)	(287,383)
Total (AF)	(0.48)	(2.76)	(2.20)	(8.38)	(12.54)	(10.07)	(12.71)	(12.69)	(3.65)	(6.17)	(0.03)	(5.61)	(2.36)	(6.60)

Crestline Village Water District
Change in Total Water Consumption - Cubic Feet
2020 vs 2024-25

2024-25 Total Consumption	Feb	Mar	Apr	May	Jun	Jul	Aug	Sep	Oct	Nov	Dec	Jan	Feb	Average
Cubic Feet	1,795,615	1,570,585	1,739,690	1,905,983	2,182,219	2,431,800	2,539,780	2,315,120	2,331,800	2,223,900	1,869,900	1,946,900	1,854,200	2,075,990
Total	1,795,615	1,570,585	1,739,690	1,905,983	2,182,219	2,431,800	2,539,780	2,315,120	2,331,800	2,223,900	1,869,900	1,946,900	1,854,200	24,911,877
2020 Total Consumption														
Cubic Feet	1,973,581	1,859,473	1,972,980	2,189,010	2,668,700	2,833,100	3,005,506	2,752,100	2,889,200	2,638,000	2,114,721	2,147,430	1,973,581	2,420,317
Total	1,973,581	1,859,473	1,972,980	2,189,010	2,668,700	2,833,100	3,005,506	2,752,100	2,889,200	2,638,000	2,114,721	2,147,430	1,973,581	29,043,801
Change in Total Consumption														
Cubic Feet	(177,966)	(288,888)	(233,290)	(283,027)	(486,481)	(401,300)	(465,726)	(436,980)	(557,400)	(414,100)	(244,821)	(200,530)	(119,381)	(344,327)
Cubic Feet	(177,966)	(288,888)	(233,290)	(283,027)	(486,481)	(401,300)	(465,726)	(436,980)	(557,400)	(414,100)	(244,821)	(200,530)	(119,381)	(344,327)
Total (AF)	(4.09)	(6.63)	(5.36)	(6.50)	(11.17)	(9.21)	(10.69)	(10.03)	(12.80)	(9.51)	(5.62)	(4.60)	(2.74)	(7.90)
% Change	-9.02%	-15.54%	-11.82%	-12.93%	-18.23%	-14.16%	-15.50%	-15.88%	-19.29%	-15.70%	-11.58%	-9.34%	-6.05%	-13.84%
Total	-9.02%	-15.54%	-11.82%	-12.93%	-18.23%	-14.16%	-15.50%	-15.88%	-19.29%	-15.70%	-11.58%	-9.34%	-6.05%	-13.84%

Crestline Village Water District
Gallons Per Capita Daily Calculation

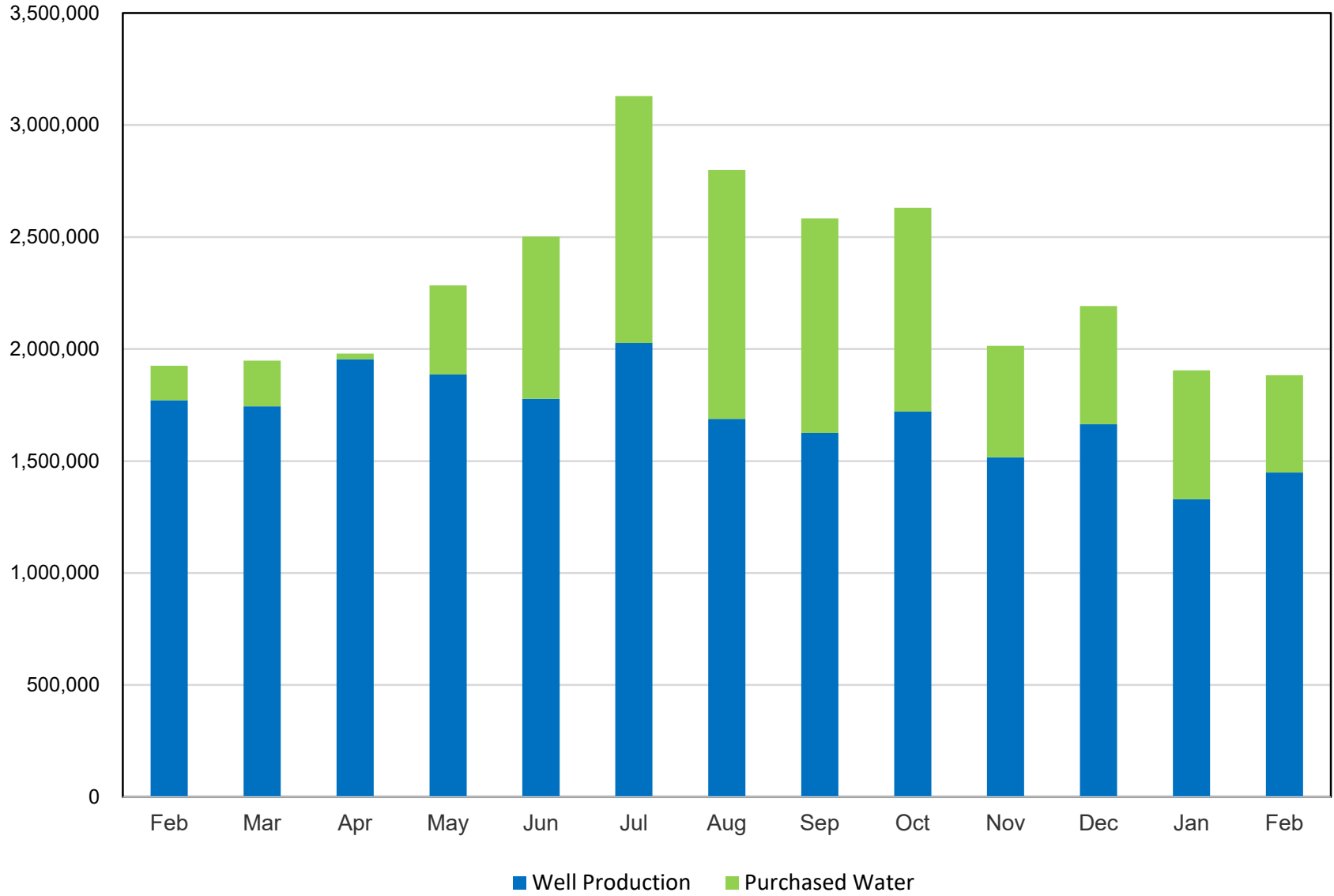
	<u>Feb</u>	<u>Mar</u>	<u>Apr</u>	<u>May</u>	<u>Jun</u>	<u>Jul</u>	<u>Aug</u>	<u>Sep</u>	<u>Oct</u>	<u>Nov</u>	<u>Dec</u>	<u>Jan</u>	<u>Feb</u>	<u>Average</u>
Residential Services with 92325 Zip	4,870	4,870	4,870	4,870	4,870	4,870	4,870	4,870	4,870	4,870	4,870	4,870	4,870	4,870
People per Household	2.39	2.39	2.39	2.39	2.39	2.39	2.39	2.39	2.39	2.39	2.39	2.39	2.39	2.39
Est. Full-Time Population	11,639	11,639	11,639	11,639	11,639	11,639	11,639	11,639	11,639	11,639	11,639	11,639	11,639	11,639
Days Per Month	29	31	30	31	30	31	31	30	31	30	31	31	28	30
Gallons Water Consumed	13,431,200	11,747,976	13,012,881	14,256,753	16,322,998	18,189,864	18,997,554	17,317,098	17,441,864	16,634,772	13,986,852	14,562,812	13,869,416	15,528,403
92325 Residential Water Usage (CF)	1,622,800	1,428,400	1,569,590	1,556,810	1,886,700	2,026,100	2,290,100	2,146,500	1,917,100	1,868,300	1,612,200	1,739,900	1,644,600	1,807,192
% Residential Water	90.4%	91.0%	90.2%	81.7%	86.5%	83.3%	90.2%	92.7%	82.2%	84.0%	86.2%	89.4%	88.7%	87.17%
Gallons Per Capita Daily - 2022/23	39.79	32.56	37.27	39.51	46.75	50.41	52.65	49.60	48.34	47.64	38.77	40.36	42.56	43.87
R - Gallons Per Capita Daily - 2022/23	35.96	29.61	33.62	32.27	40.42	42.01	47.48	45.98	39.75	40.02	33.42	36.07	37.75	38.20

2020

Residential Services with 92325 Zip	4,870	4,870	4,870	4,870	4,870	4,870	4,870	4,870	4,870	4,870	4,870	4,870	4,870	4,870
People per Household	2.39	2.39	2.39	2.39	2.39	2.39	2.39	2.39	2.39	2.39	2.39	2.39	2.39	2.39
Est. Full-Time Population	11,639	11,639	11,639	11,639	11,639	11,639	11,639	11,639	11,639	11,639	11,639	11,639	11,639	11,639
Days Per Month	29	31	30	31	30	31	31	30	31	30	31	31	28	30
Gallons Water Consumed	14,762,386	13,908,858	14,757,890	16,373,795	19,961,876	21,191,588	22,481,185	20,585,708	21,611,216	19,732,240	15,818,113	16,062,776	14,762,386	18,103,969
92325 Residential Water Usage (CF)	1,735,931	1,562,890	1,715,180	1,967,800	2,263,800	2,357,300	2,551,906	2,752,100	2,752,100	2,219,900	1,910,021	1,846,800	1,735,931	2,136,311
% Residential Water	88.0%	84.1%	86.9%	89.9%	84.8%	83.2%	84.9%	100.0%	95.3%	84.2%	90.3%	86.0%	88.0%	88.13%
Gallons Per Capita Daily - 2020	43.74	38.55	42.27	45.38	57.17	58.73	62.31	58.96	59.90	56.51	43.84	44.52	45.30	51.12
R - Gallons Per Capita Daily - 2020	38.47	32.40	36.74	40.79	48.50	48.87	52.91	58.96	57.05	47.55	39.60	38.29	39.84	45.12
Change R-GPCD 2020-2023	(2.51)	(2.79)	(3.12)	(8.52)	(8.08)	(6.87)	(5.43)	(12.97)	(17.31)	(7.53)	(6.17)	(2.22)	(2.10)	(6.92)
% Change	-6.51%	-8.60%	-8.49%	-20.88%	-16.66%	-14.05%	-10.26%	-22.00%	-30.33%	-15.84%	-15.59%	-5.79%	-5.26%	-15.34%

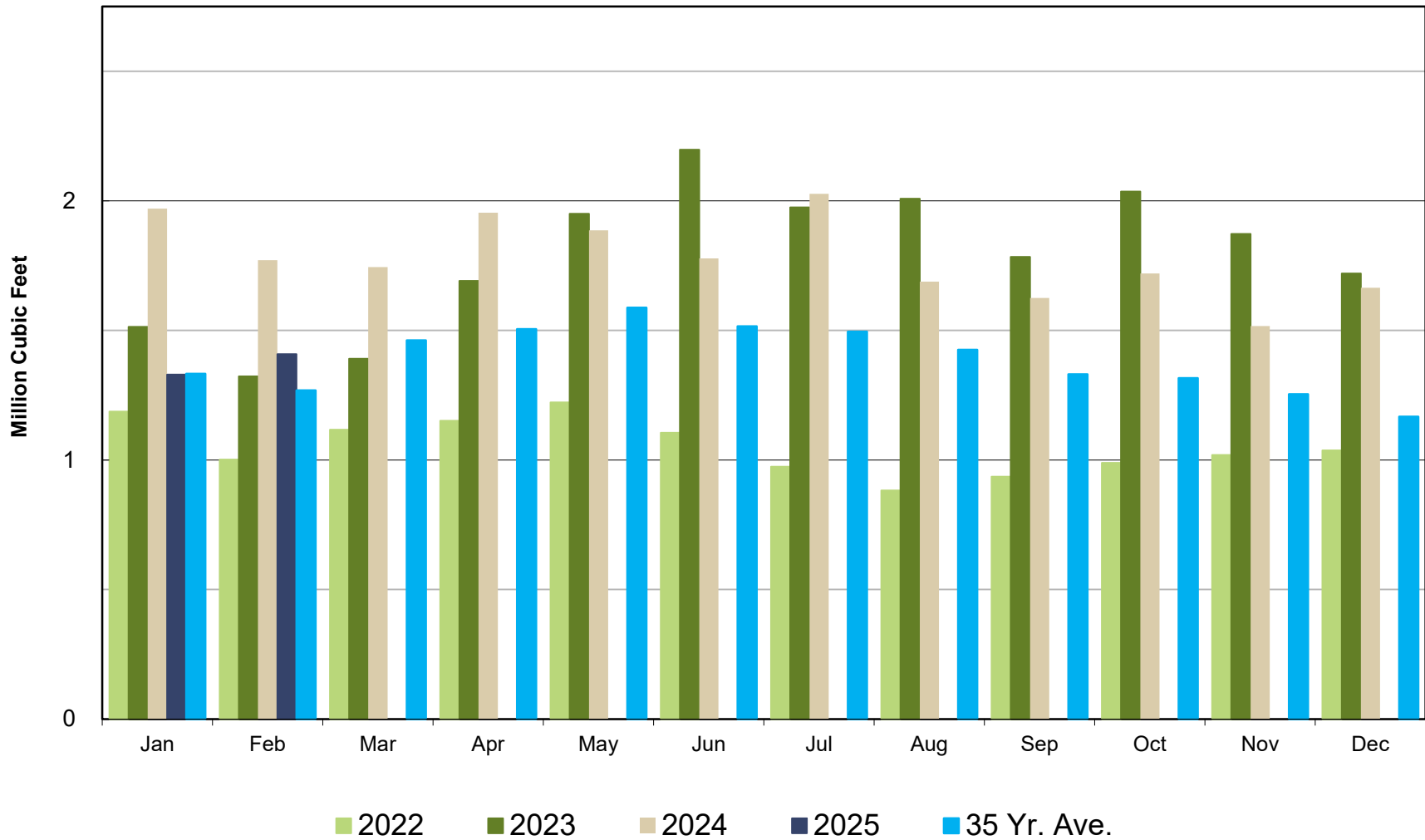
Crestline Village Water District

Water Sources - Last 13 Months in Cubic Feet Jan 2024 - Jan 2025



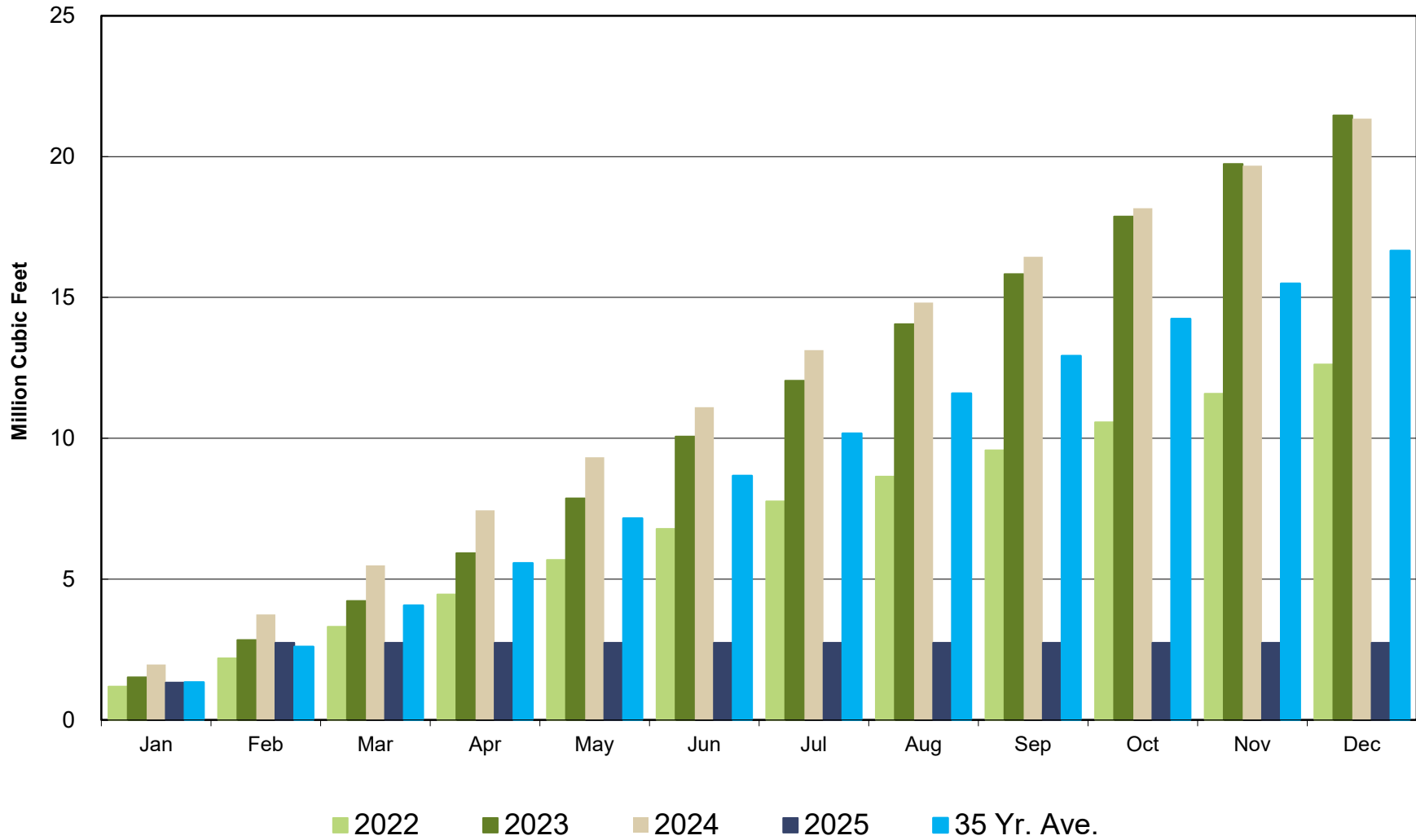
Crestline Village Water District

Well Production by Month Comparison



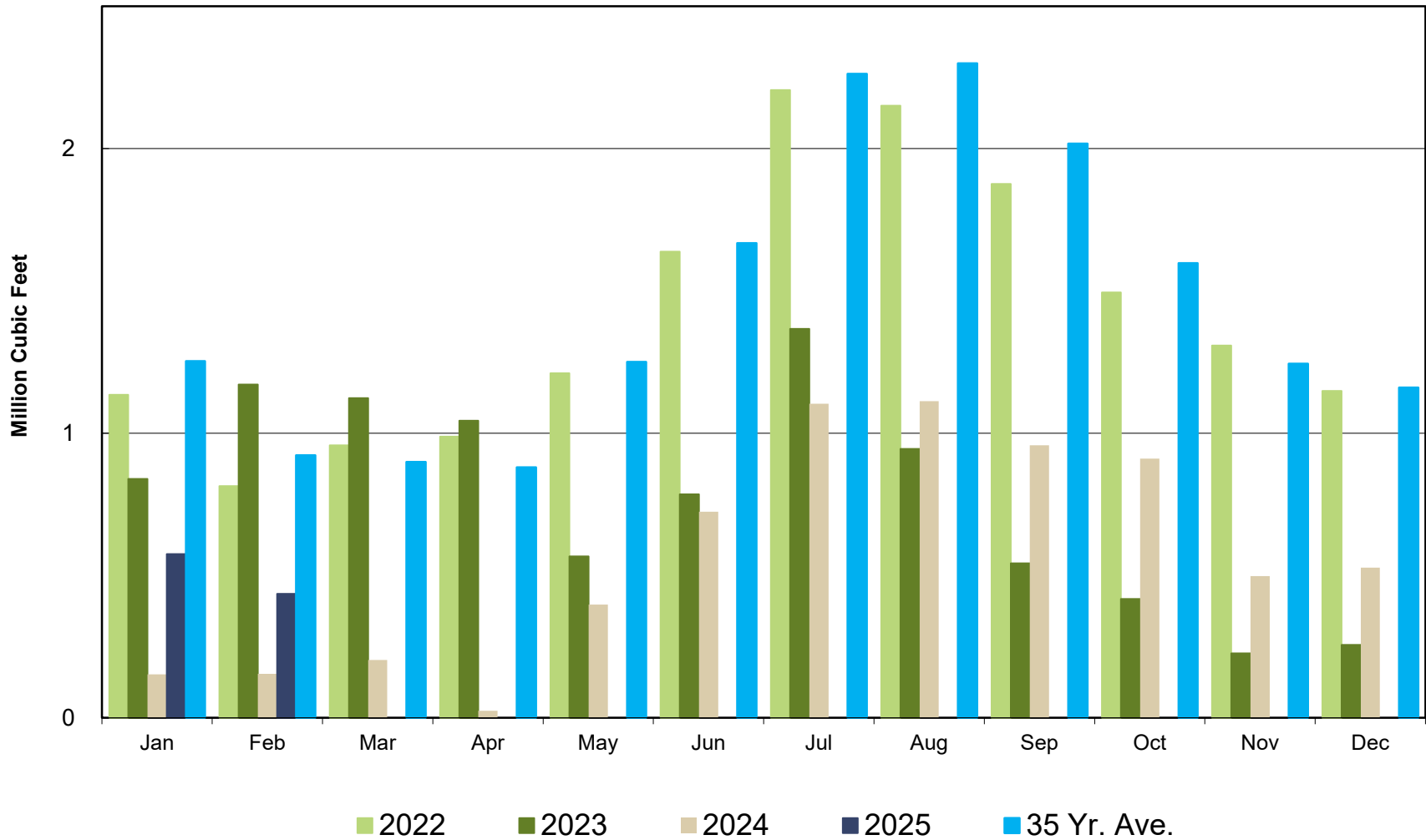
Crestline Village Water District

Well Production by Month Cumulative



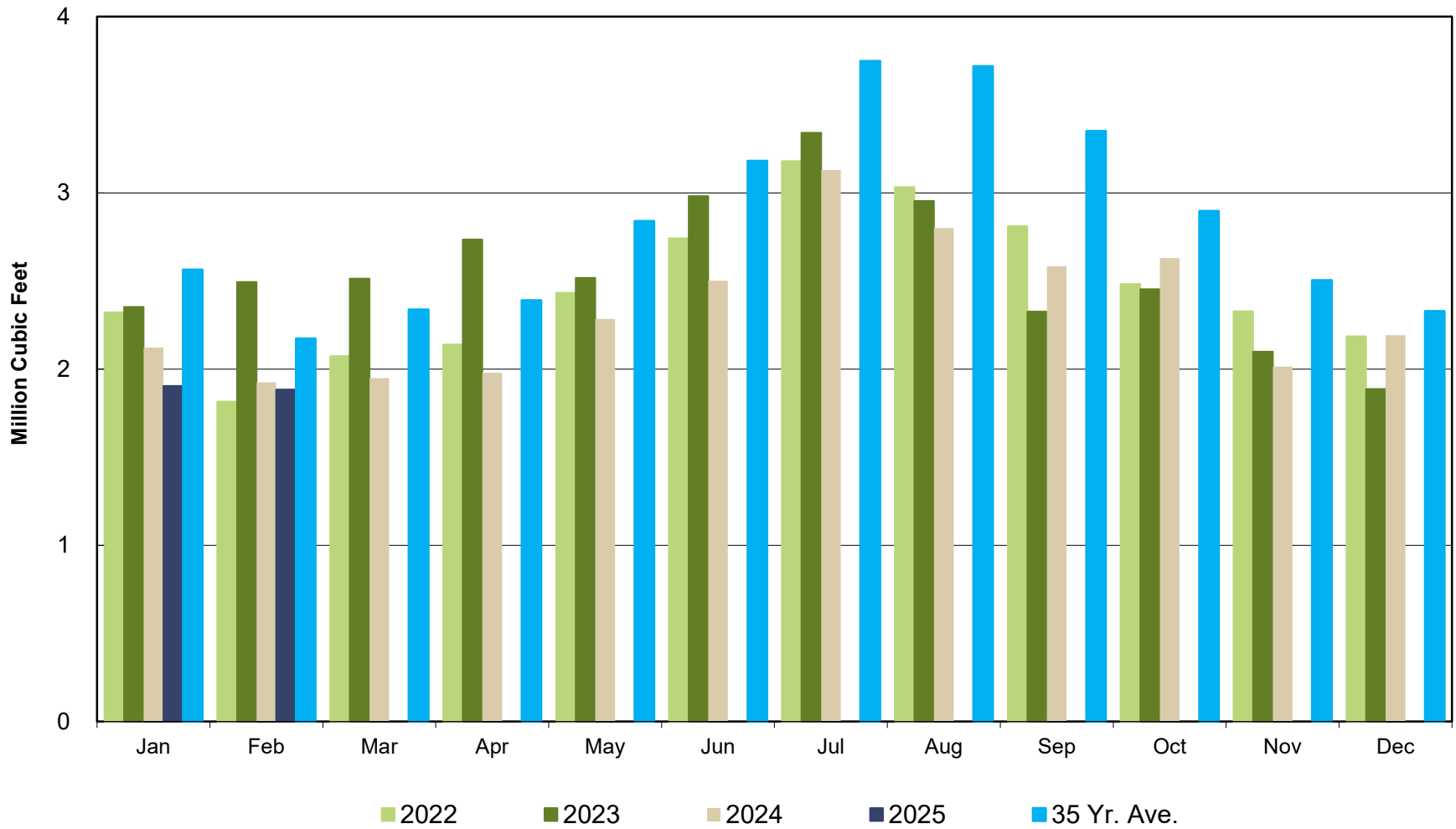
Crestline Village Water District

Purchased Water by Month Comparison



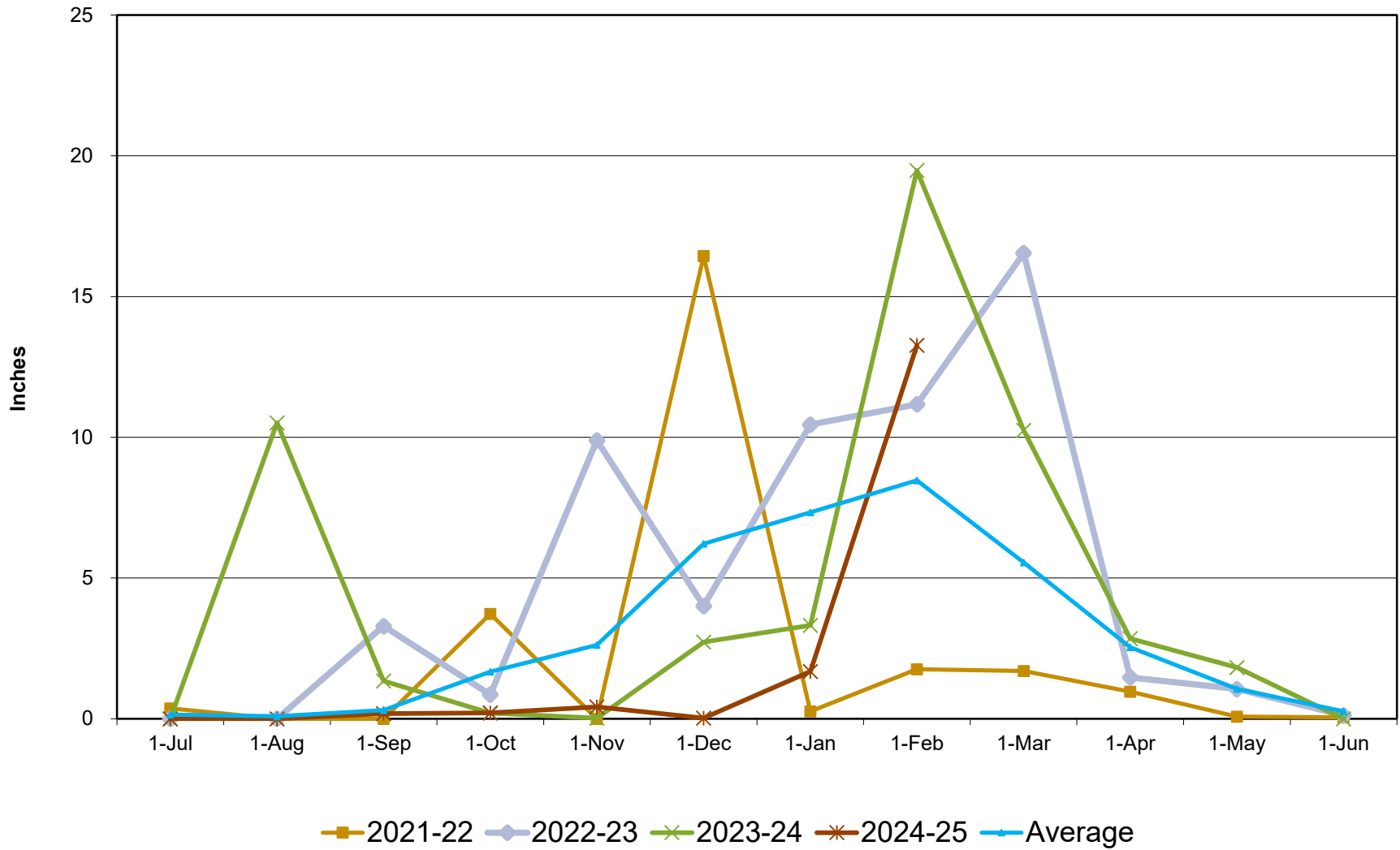
Crestline Village Water District

Total Production by Month Comparison



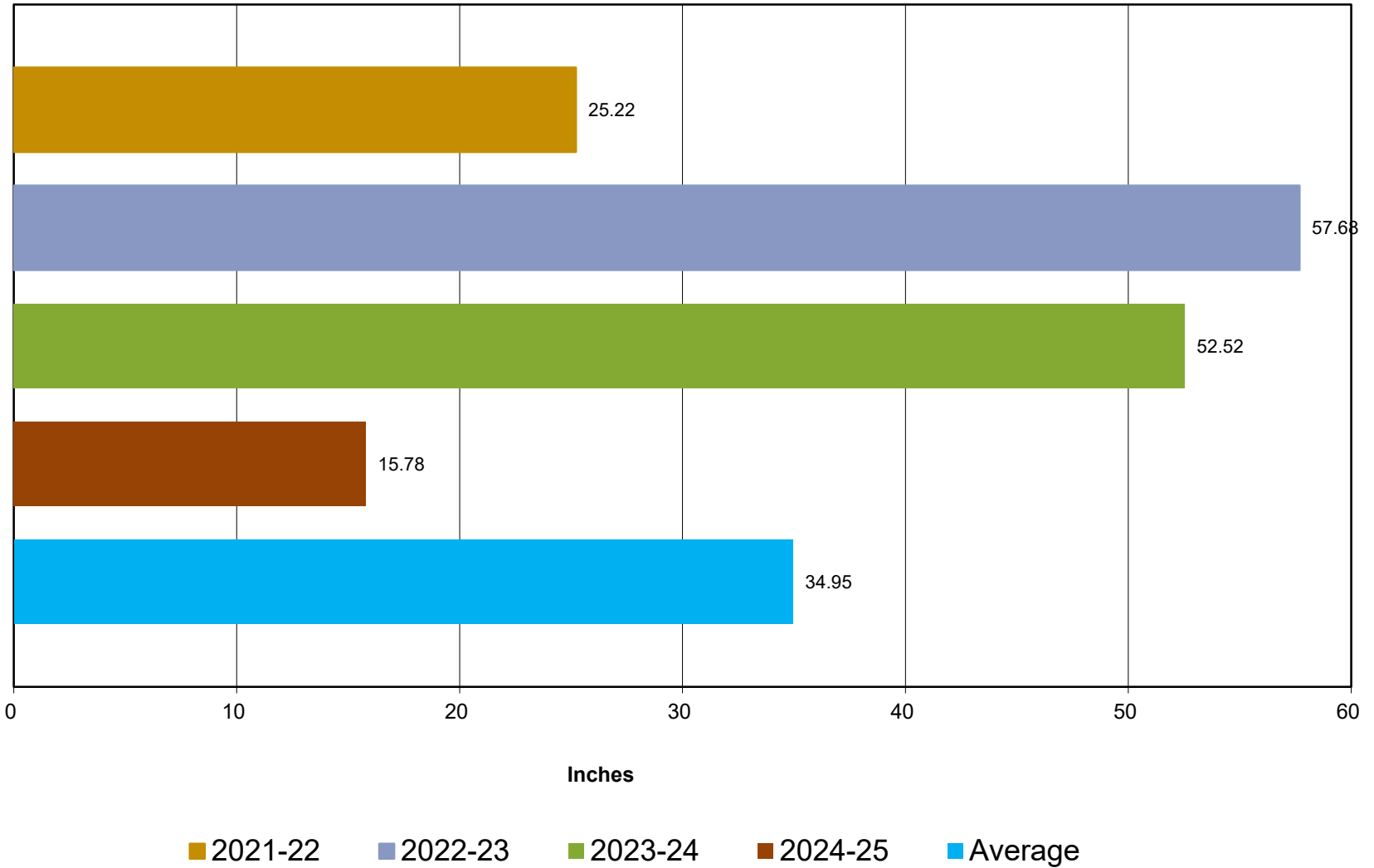
Crestline Village Water District

Rainfall Jul 1-Jun 30



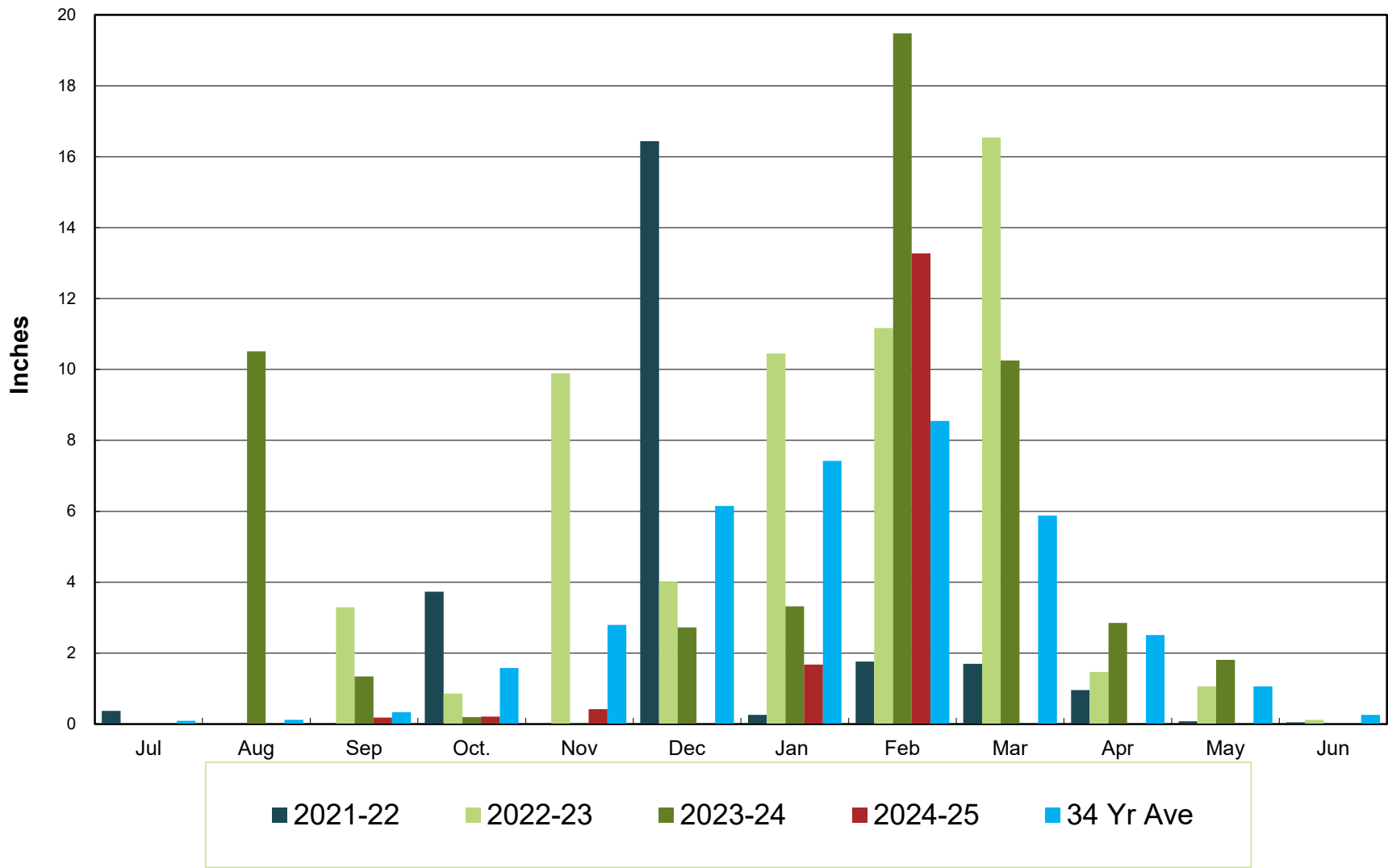
Crestline Village Water District

Total Rainfall Jul 1- Jun 30



Crestline Village Water District

Rainfall by Month



Crestline Village Water District

Rainfall Cumulative

