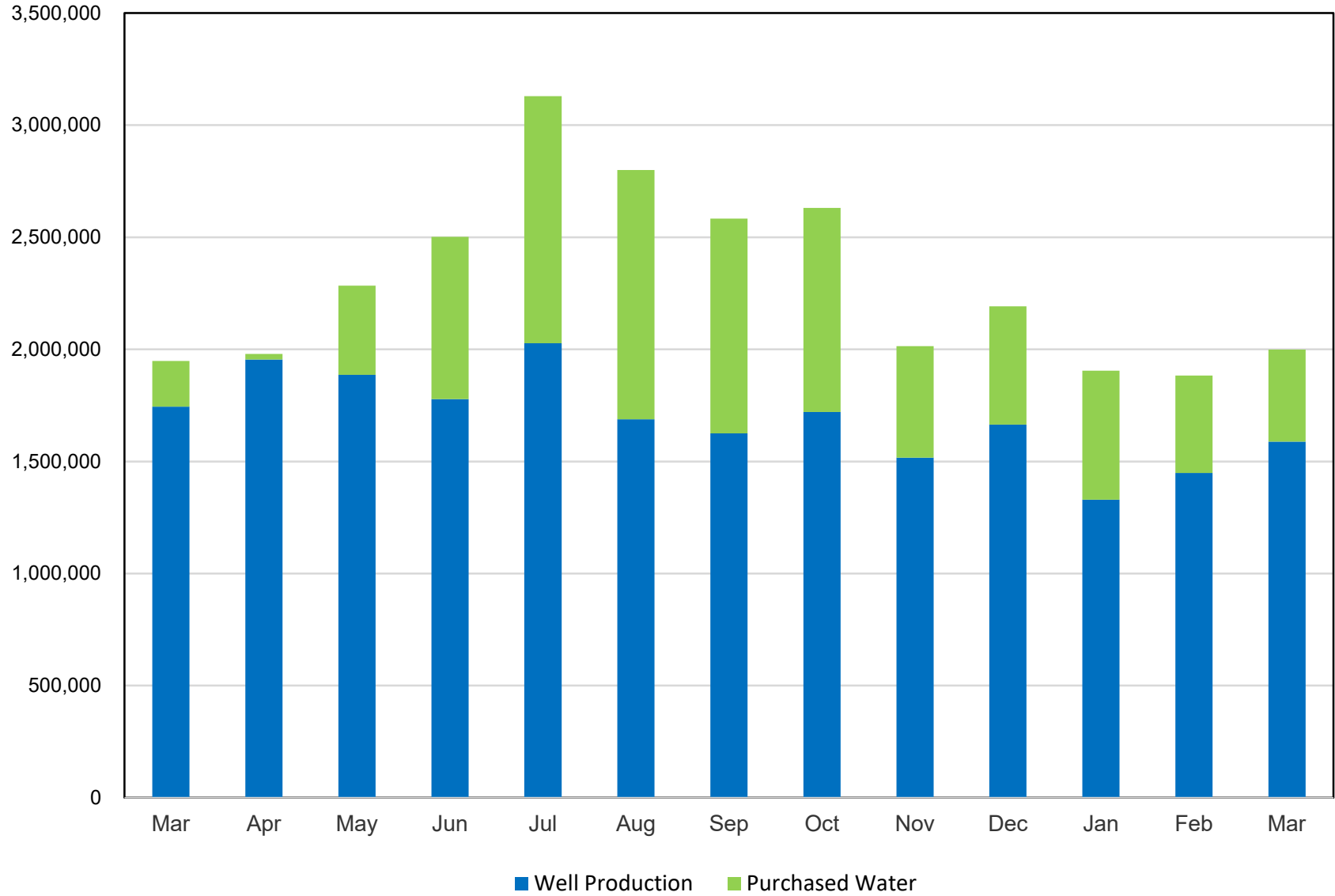


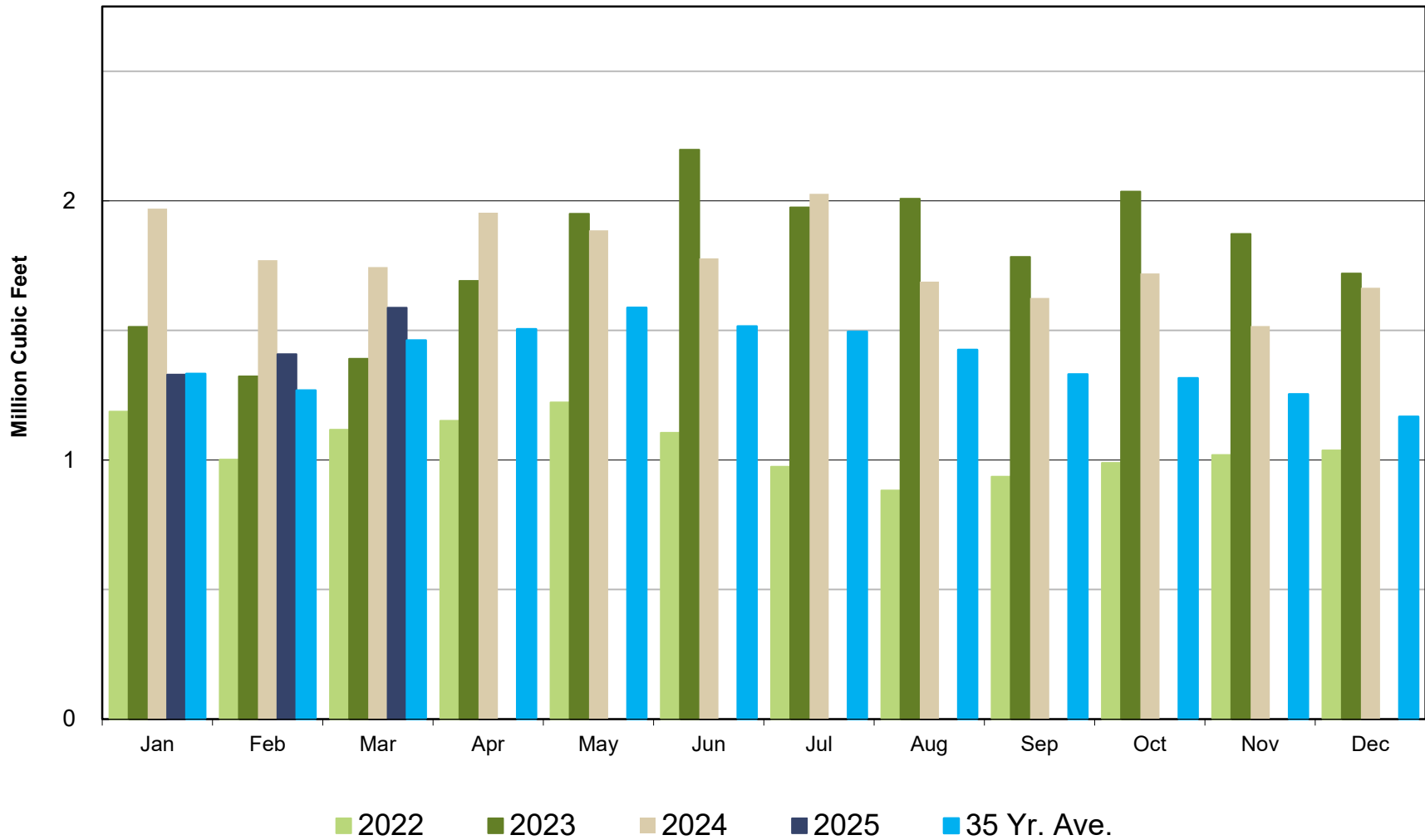
Crestline Village Water District

Water Sources - Last 13 Months in Cubic Feet Mar 2024 - Mar 2025



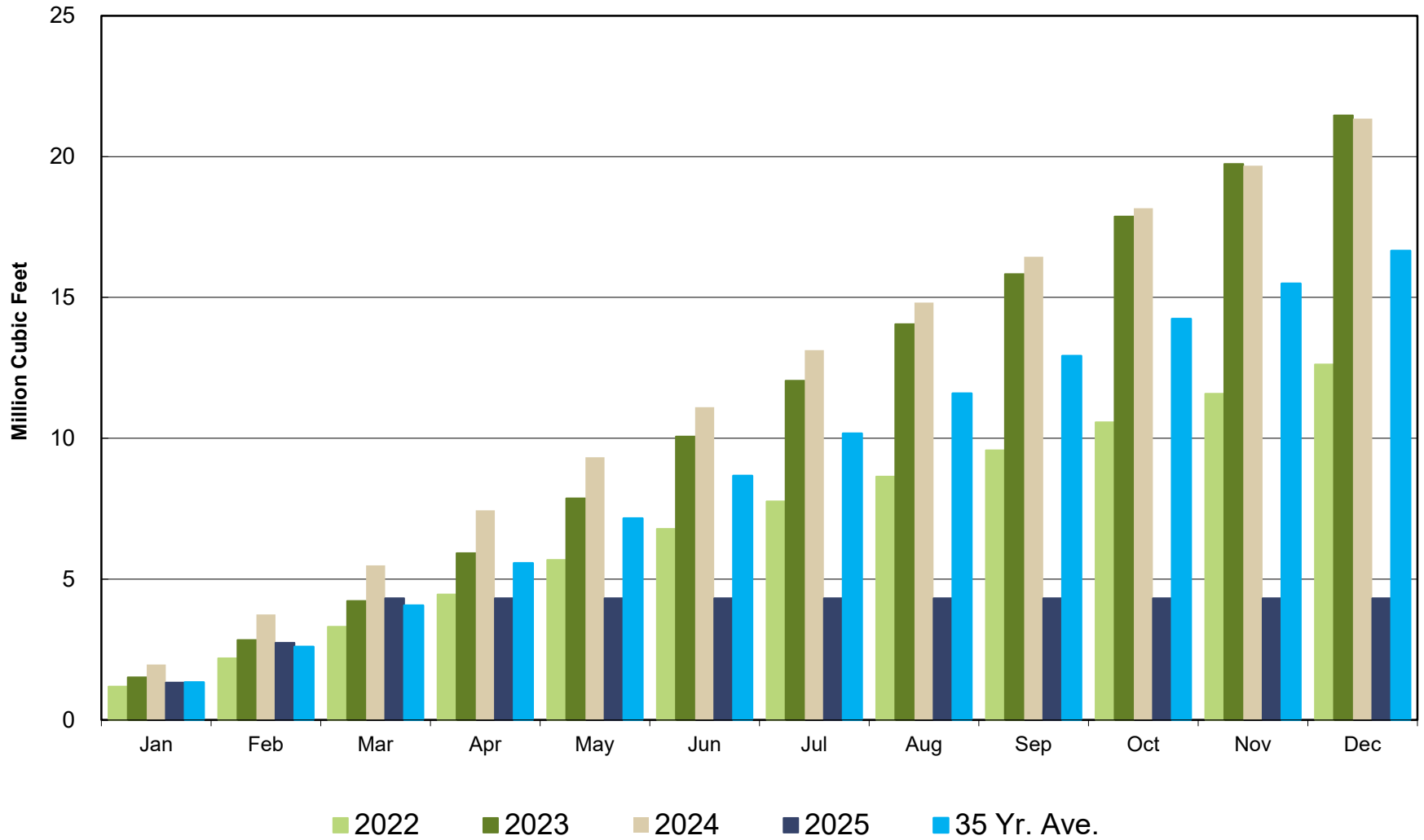
Crestline Village Water District

Well Production by Month Comparison



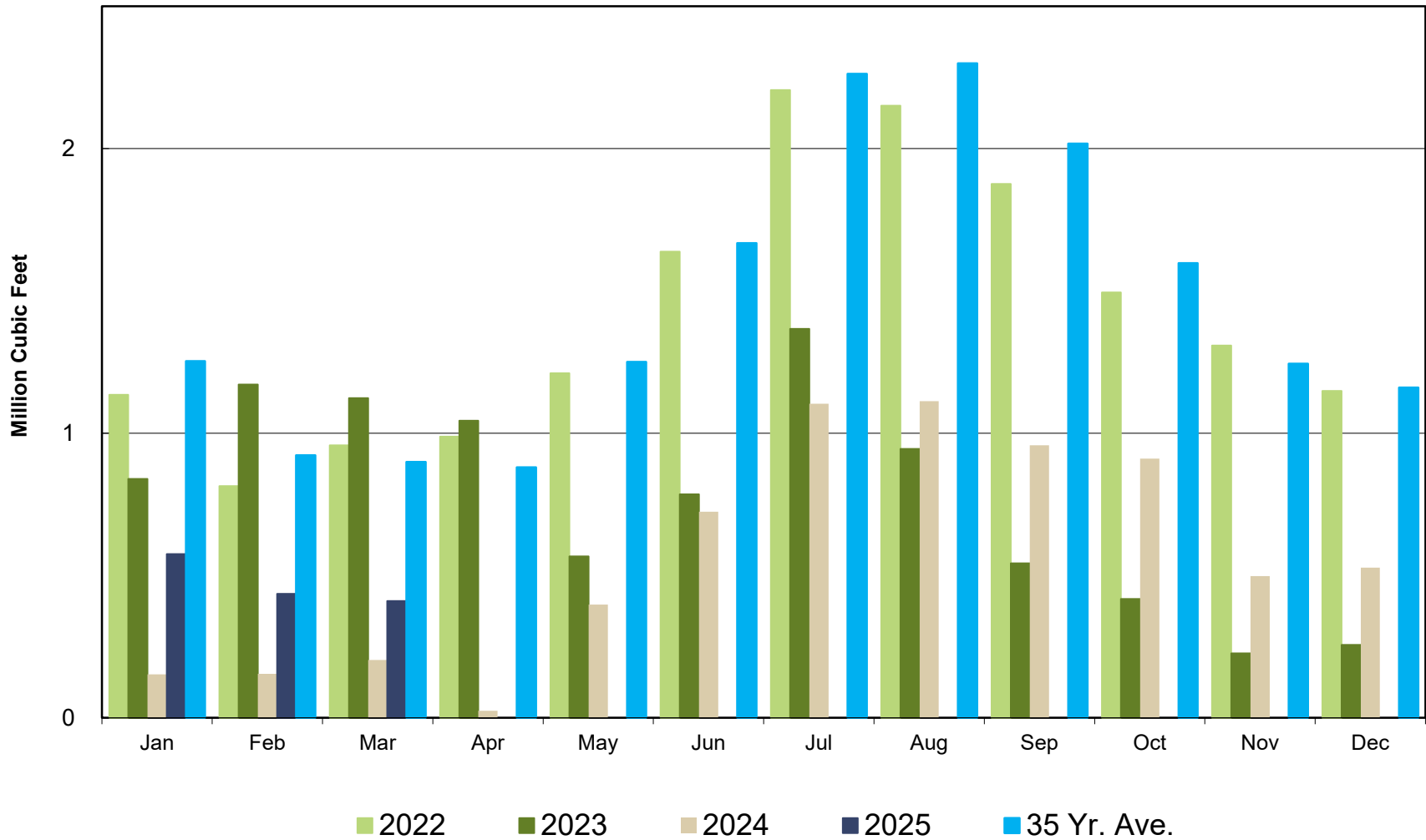
Crestline Village Water District

Well Production by Month Cumulative



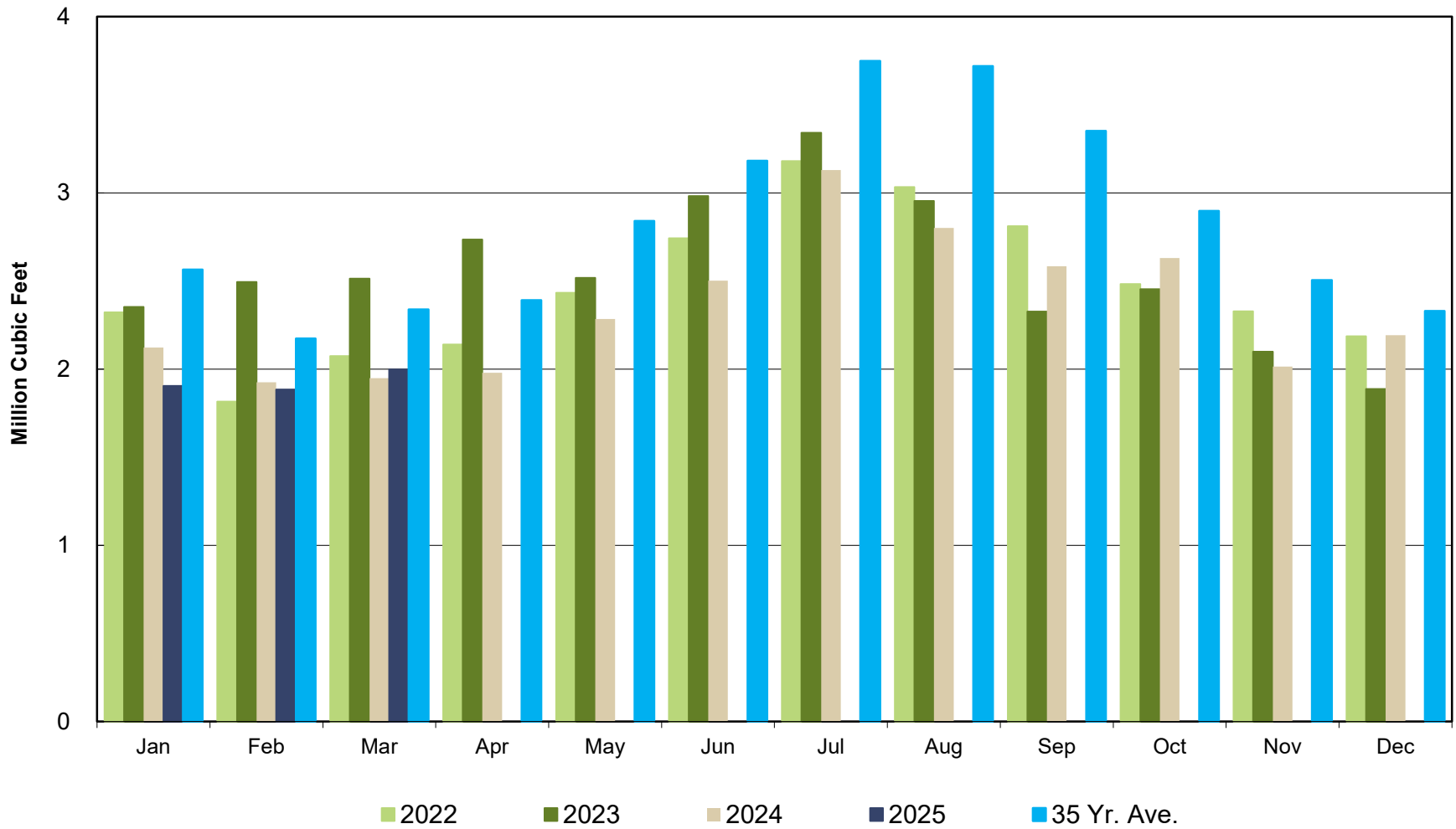
Crestline Village Water District

Purchased Water by Month Comparison



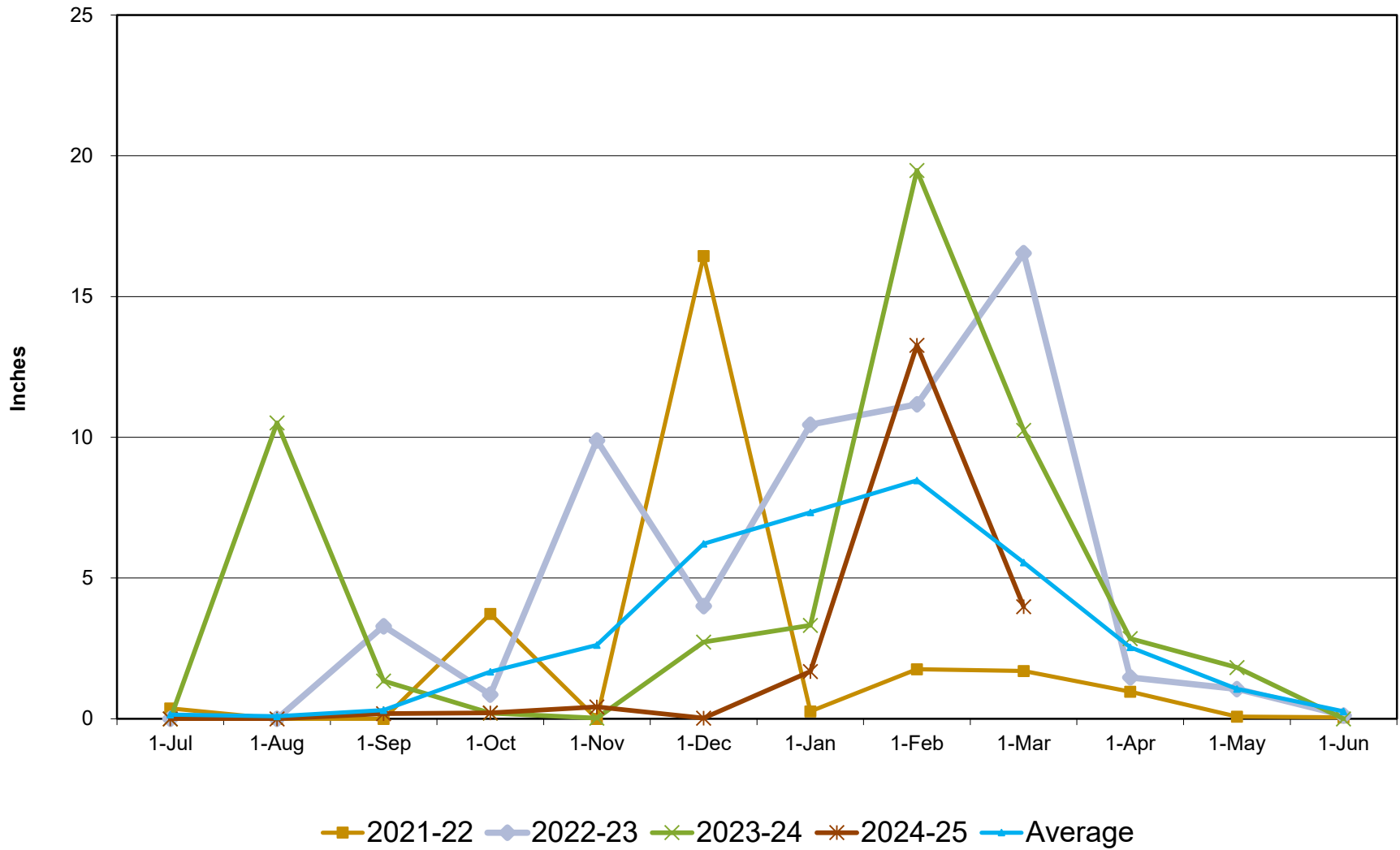
Crestline Village Water District

Total Production by Month Comparison



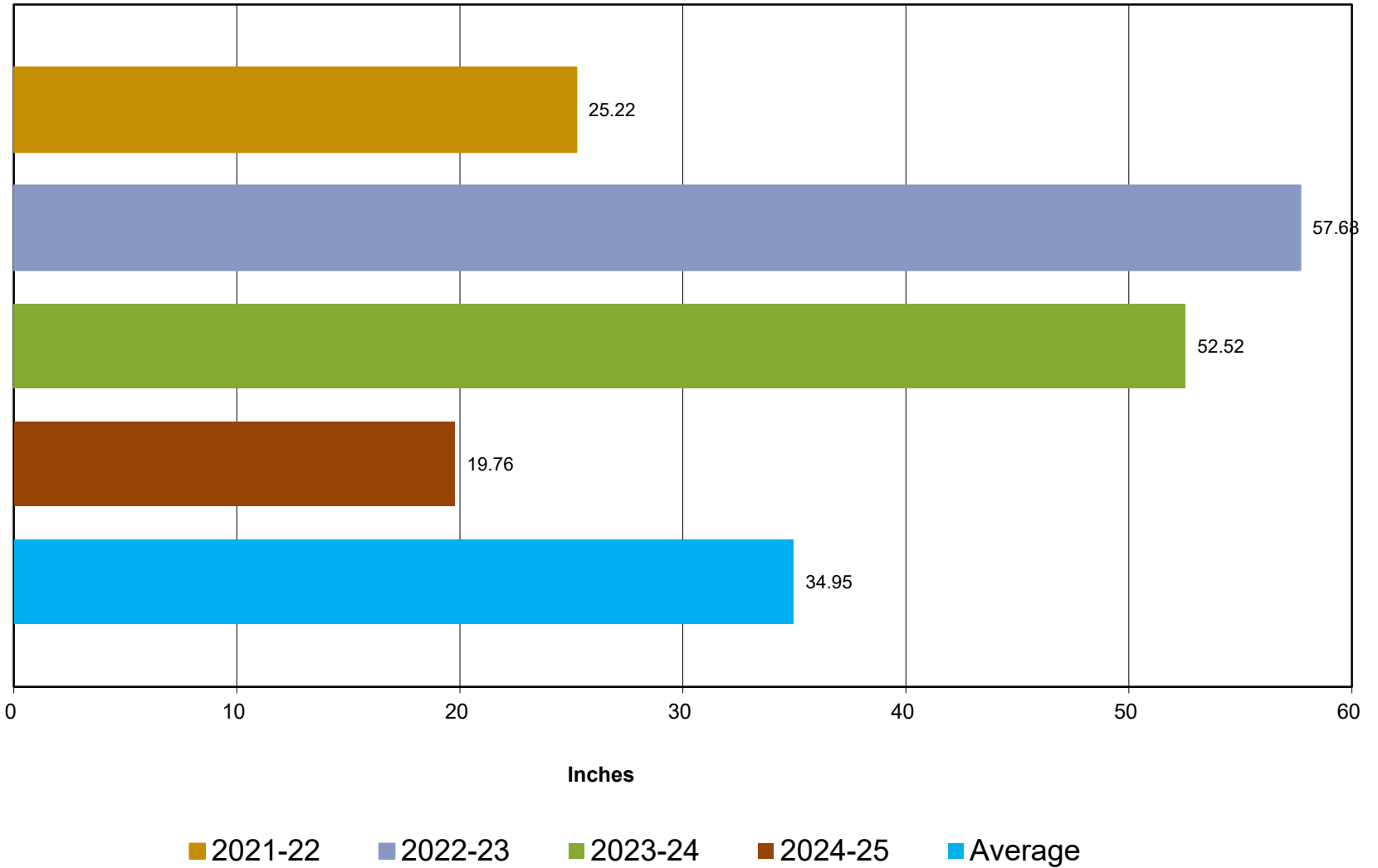
Crestline Village Water District

Rainfall Jul 1-Jun 30



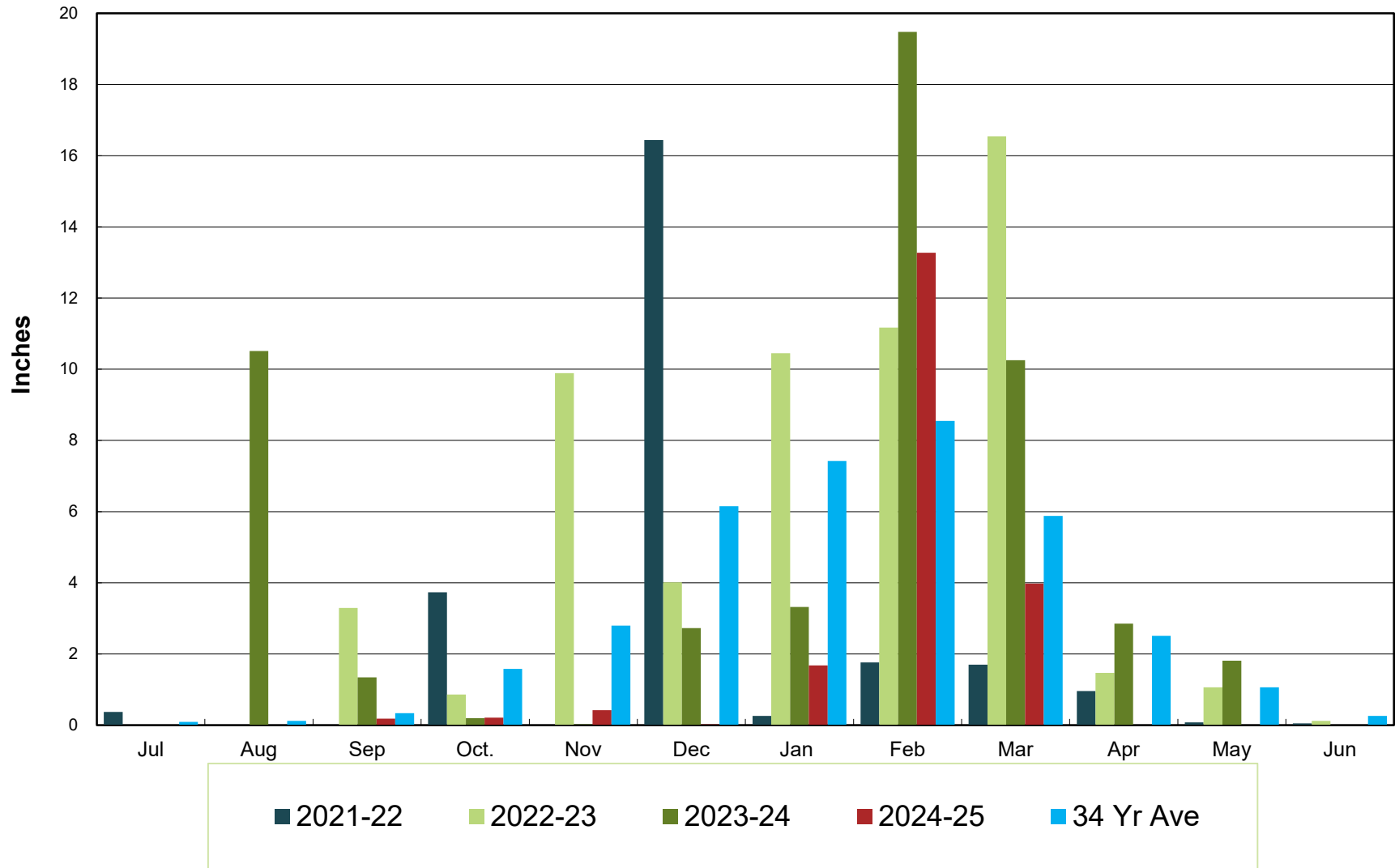
Crestline Village Water District

Total Rainfall Jul 1- Jun 30



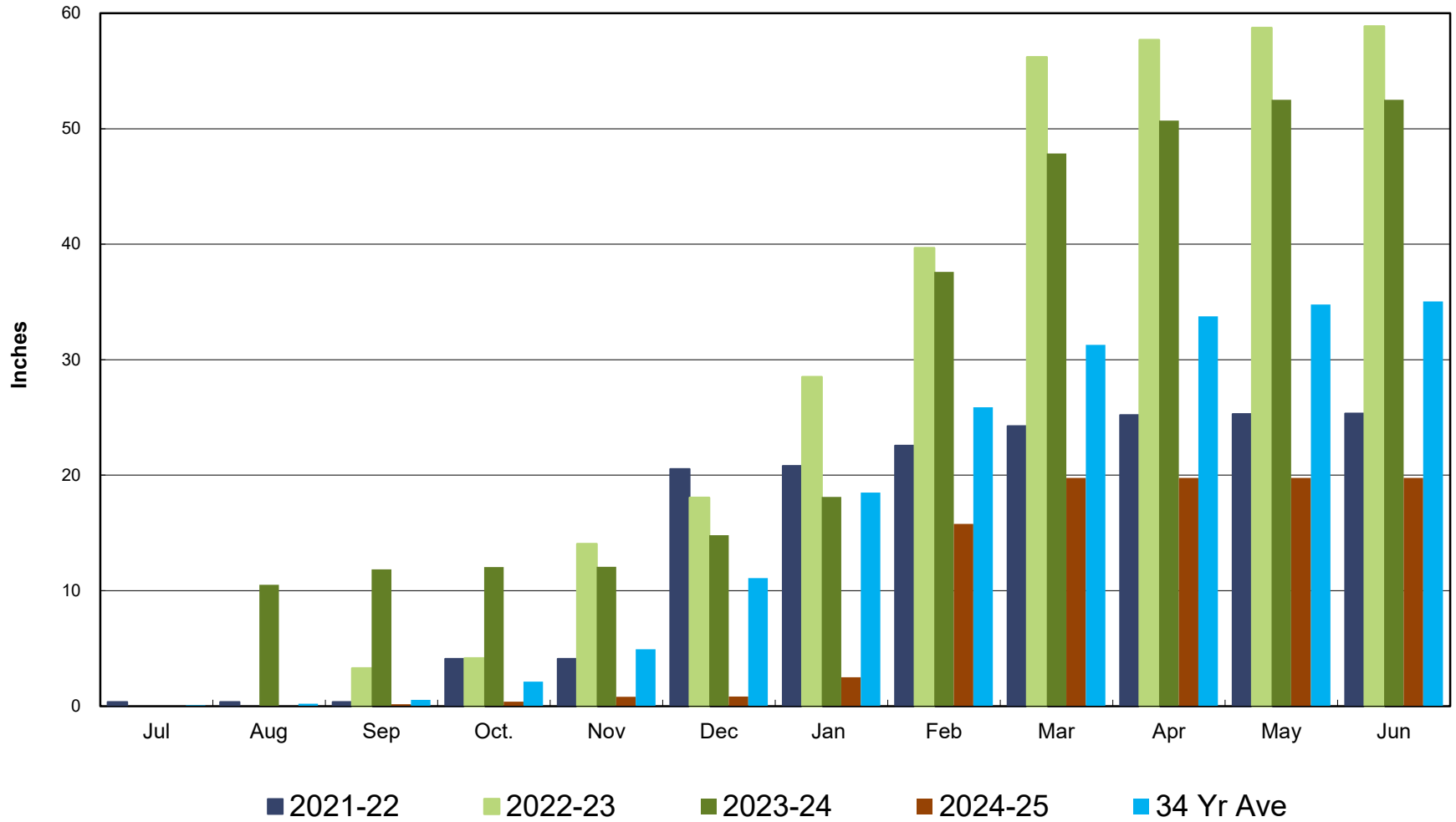
Crestline Village Water District

Rainfall by Month



Crestline Village Water District

Rainfall Cumulative



Crestline Village Water District
Change in Water Production - Cubic Feet
2020 vs 2024-25

2024-25 Production	Mar	Apr	May	Jun	Jul	Aug	Sep	Oct	Nov	Dec	Jan	Feb	Mar	Average
Wells	1,744,554	1,954,539	1,886,560	1,777,983	2,026,665	1,687,949	1,625,304	1,720,212	1,516,514	1,664,637	1,329,313	1,408,245	1,588,054	1,695,206
CLAWA	203,128	24,733	397,380	723,864	1,102,981	1,112,309	957,335	910,316	498,006	526,897	575,008	435,376	410,467	622,278
Total	1,947,682	1,979,272	2,283,940	2,501,847	3,129,646	2,800,258	2,582,639	2,630,528	2,014,520	2,191,534	1,904,321	1,843,621	1,998,521	2,317,484
2020 Production														
Wells	1,837,581	1,922,894	1,936,457	2,069,986	1,740,467	1,863,039	1,724,448	1,520,142	1,573,711	1,397,987	1,790,808	1,606,207	1,837,581	1,748,644
CLAWA	230,214	152,380	712,554	978,249	1,827,648	1,490,709	1,410,963	1,269,277	709,571	795,000	357,741	340,374	230,214	856,223
Total	2,067,795	2,075,274	2,649,011	3,048,235	3,568,115	3,353,748	3,135,411	2,789,419	2,283,282	2,192,987	2,148,549	1,946,581	2,067,795	2,604,867
Change in Production														
Wells	(93,027)	31,645	(49,897)	(292,003)	286,198	(175,090)	(99,144)	200,070	(57,197)	266,650	(461,495)	(197,962)	(249,527)	(53,438)
CLAWA	(27,086)	(127,647)	(315,174)	(254,385)	(724,667)	(378,400)	(453,628)	(358,961)	(211,565)	(268,103)	217,267	95,002	180,253	(233,946)
Total	(120,113)	(96,002)	(365,071)	(546,388)	(438,469)	(553,490)	(552,772)	(158,891)	(268,762)	(1,453)	(244,228)	(102,960)	(69,274)	(287,383)
Total (AF)	(2.76)	(2.20)	(8.38)	(12.54)	(10.07)	(12.71)	(12.69)	(3.65)	(6.17)	(0.03)	(5.61)	(2.36)	(1.59)	(6.60)

Crestline Village Water District
Change in Total Water Consumption - Cubic Feet
2020 vs 2024-25

2024-25 Total Consumption	Mar	Apr	May	Jun	Jul	Aug	Sep	Oct	Nov	Dec	Jan	Feb	Mar	Average
Cubic Feet	1,570,585	1,739,690	1,905,983	2,182,219	2,431,800	2,539,780	2,315,120	2,331,800	2,223,900	1,869,900	1,946,900	1,854,200	1,571,500	2,075,990
Total	1,570,585	1,739,690	1,905,983	2,182,219	2,431,800	2,539,780	2,315,120	2,331,800	2,223,900	1,869,900	1,946,900	1,854,200	1,571,500	24,911,877
2020 Total Consumption														
Cubic Feet	1,859,473	1,972,980	2,189,010	2,668,700	2,833,100	3,005,506	2,752,100	2,889,200	2,638,000	2,114,721	2,147,430	1,973,581	1,859,473	2,420,317
Total	1,859,473	1,972,980	2,189,010	2,668,700	2,833,100	3,005,506	2,752,100	2,889,200	2,638,000	2,114,721	2,147,430	1,973,581	1,859,473	29,043,801
Change in Total Consumption														Average
Cubic Feet	(288,888)	(233,290)	(283,027)	(486,481)	(401,300)	(465,726)	(436,980)	(557,400)	(414,100)	(244,821)	(200,530)	(119,381)	(287,973)	(344,327)
Cubic Feet	(288,888)	(233,290)	(283,027)	(486,481)	(401,300)	(465,726)	(436,980)	(557,400)	(414,100)	(244,821)	(200,530)	(119,381)	(287,973)	(344,327)
Total (AF)	(6.63)	(5.36)	(6.50)	(11.17)	(9.21)	(10.69)	(10.03)	(12.80)	(9.51)	(5.62)	(4.60)	(2.74)	(6.61)	(7.90)
% Change	-15.54%	-11.82%	-12.93%	-18.23%	-14.16%	-15.50%	-15.88%	-19.29%	-15.70%	-11.58%	-9.34%	-6.05%	-15.49%	-13.84%
Total	-15.54%	-11.82%	-12.93%	-18.23%	-14.16%	-15.50%	-15.88%	-19.29%	-15.70%	-11.58%	-9.34%	-6.05%	-15.49%	-13.84%

Crestline Village Water District
Gallons Per Capita Daily Calculation

	<u>Mar</u>	<u>Apr</u>	<u>May</u>	<u>Jun</u>	<u>Jul</u>	<u>Aug</u>	<u>Sep</u>	<u>Oct</u>	<u>Nov</u>	<u>Dec</u>	<u>Jan</u>	<u>Feb</u>	<u>Mar</u>	<u>Average</u>
Residential Services with 92325 Zip	4,870	4,870	4,870	4,870	4,870	4,870	4,870	4,870	4,870	4,870	4,870	4,870	4,870	4,870
People per Household	2.39	2.39	2.39	2.39	2.39	2.39	2.39	2.39	2.39	2.39	2.39	2.39	2.39	2.39
Est. Full-Time Population	11,639	11,639	11,639	11,639	11,639	11,639	11,639	11,639	11,639	11,639	11,639	11,639	11,639	11,639
Days Per Month	31	30	31	30	31	31	30	31	30	31	31	28	31	30
Gallons Water Consumed	11,747,976	13,012,881	14,256,753	16,322,998	18,189,864	18,997,554	17,317,098	17,441,864	16,634,772	13,986,852	14,562,812	13,869,416	11,754,820	15,528,403
92325 Residential Water Usage (CF)	1,428,400	1,569,590	1,556,810	1,886,700	2,026,100	2,290,100	2,146,500	1,917,100	1,868,300	1,612,200	1,739,900	1,644,600	1,391,300	1,807,192
% Residential Water	91.0%	90.2%	81.7%	86.5%	83.3%	90.2%	92.7%	82.2%	84.0%	86.2%	89.4%	88.7%	88.5%	87.17%
Gallons Per Capita Daily - 2022/23	32.56	37.27	39.51	46.75	50.41	52.65	49.60	48.34	47.64	38.77	40.36	42.56	32.58	43.87
R - Gallons Per Capita Daily - 2022/23	29.61	33.62	32.27	40.42	42.01	47.48	45.98	39.75	40.02	33.42	36.07	37.75	28.84	38.20

2020

Residential Services with 92325 Zip	4,870	4,870	4,870	4,870	4,870	4,870	4,870	4,870	4,870	4,870	4,870	4,870	4,870	4,870
People per Household	2.39	2.39	2.39	2.39	2.39	2.39	2.39	2.39	2.39	2.39	2.39	2.39	2.39	2.39
Est. Full-Time Population	11,639	11,639	11,639	11,639	11,639	11,639	11,639	11,639	11,639	11,639	11,639	11,639	11,639	11,639
Days Per Month	31	30	31	30	31	31	30	31	30	31	31	28	31	30
Gallons Water Consumed	13,908,858	14,757,890	16,373,795	19,961,876	21,191,588	22,481,185	20,585,708	21,611,216	19,732,240	15,818,113	16,062,776	14,762,386	13,908,858	18,103,969
92325 Residential Water Usage (CF)	1,562,890	1,715,180	1,967,800	2,263,800	2,357,300	2,551,906	2,752,100	2,752,100	2,219,900	1,910,021	1,846,800	1,735,931	1,562,890	2,136,311
% Residential Water	84.1%	86.9%	89.9%	84.8%	83.2%	84.9%	100.0%	95.3%	84.2%	90.3%	86.0%	88.0%	84.1%	88.13%
Gallons Per Capita Daily - 2020	38.55	42.27	45.38	57.17	58.73	62.31	58.96	59.90	56.51	43.84	44.52	45.30	38.55	51.12
R - Gallons Per Capita Daily - 2020	32.40	36.74	40.79	48.50	48.87	52.91	58.96	57.05	47.55	39.60	38.29	39.84	32.40	45.12
Change R-GPCD 2020-2023	(2.79)	(3.12)	(8.52)	(8.08)	(6.87)	(5.43)	(12.97)	(17.31)	(7.53)	(6.17)	(2.22)	(2.10)	(3.56)	(6.92)
% Change	-8.60%	-8.49%	-20.88%	-16.66%	-14.05%	-10.26%	-22.00%	-30.33%	-15.84%	-15.59%	-5.79%	-5.26%	-10.98%	-15.34%