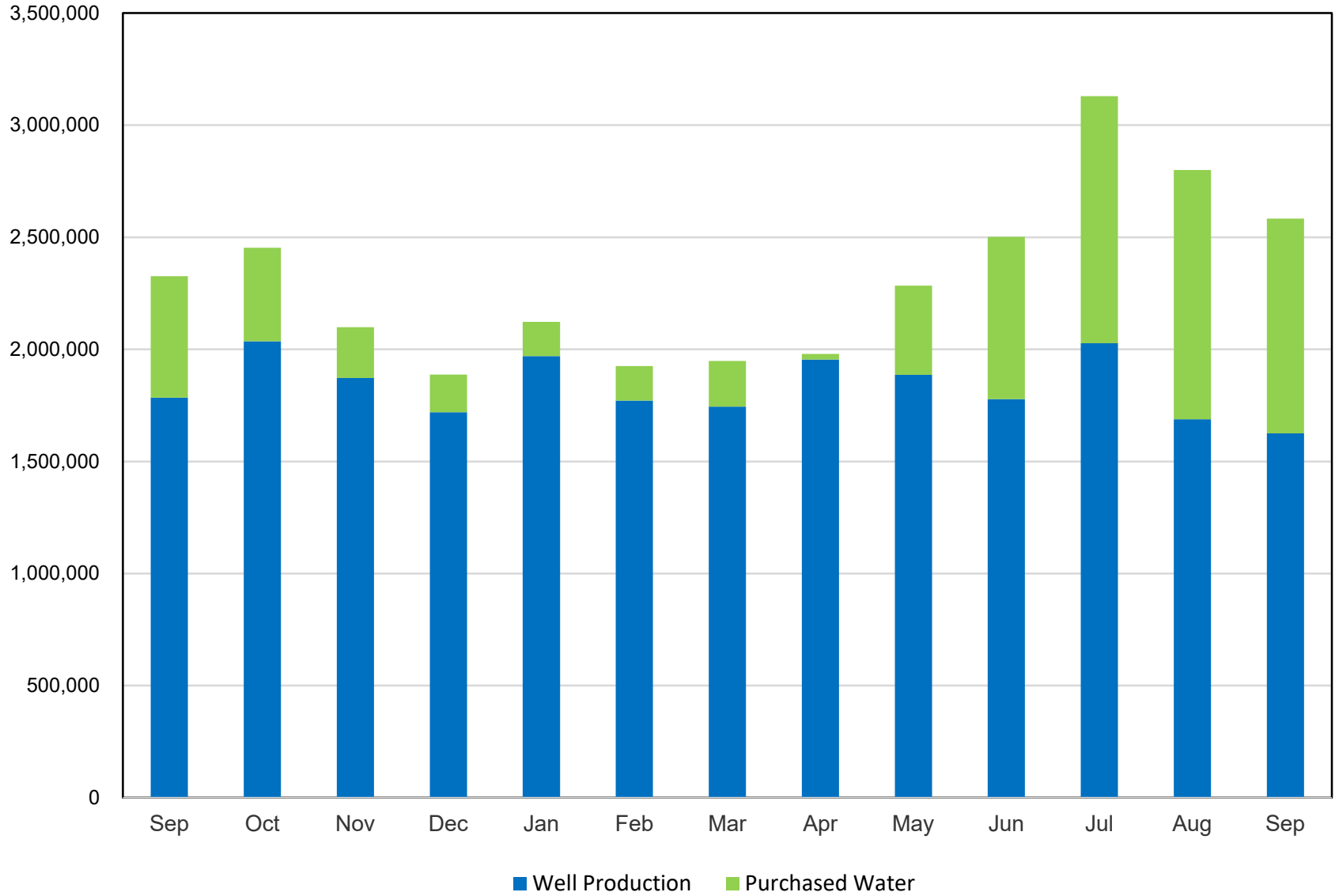


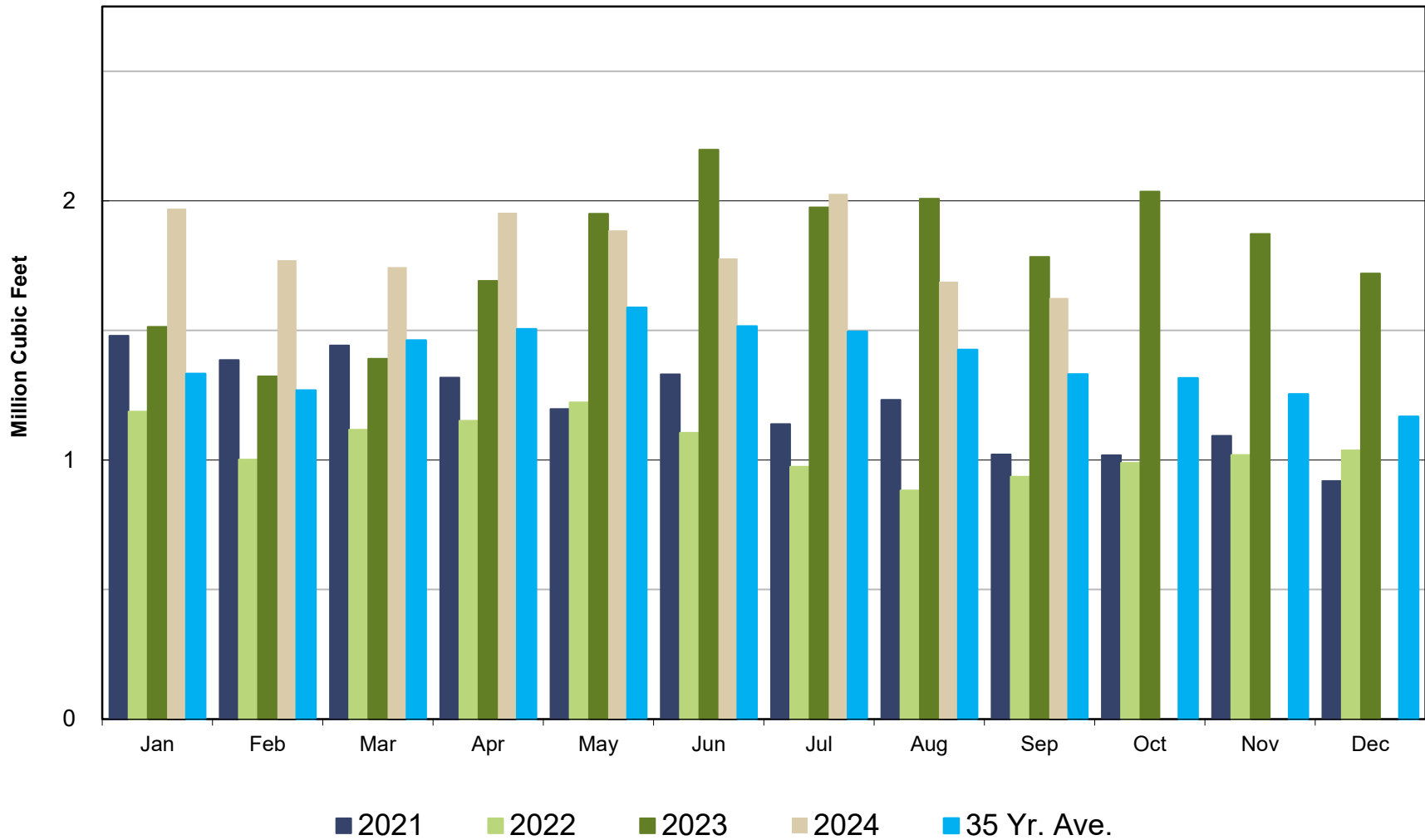
# Crestline Village Water District

## Water Sources - Last 13 Months in Cubic Feet September 2023 - September 2024



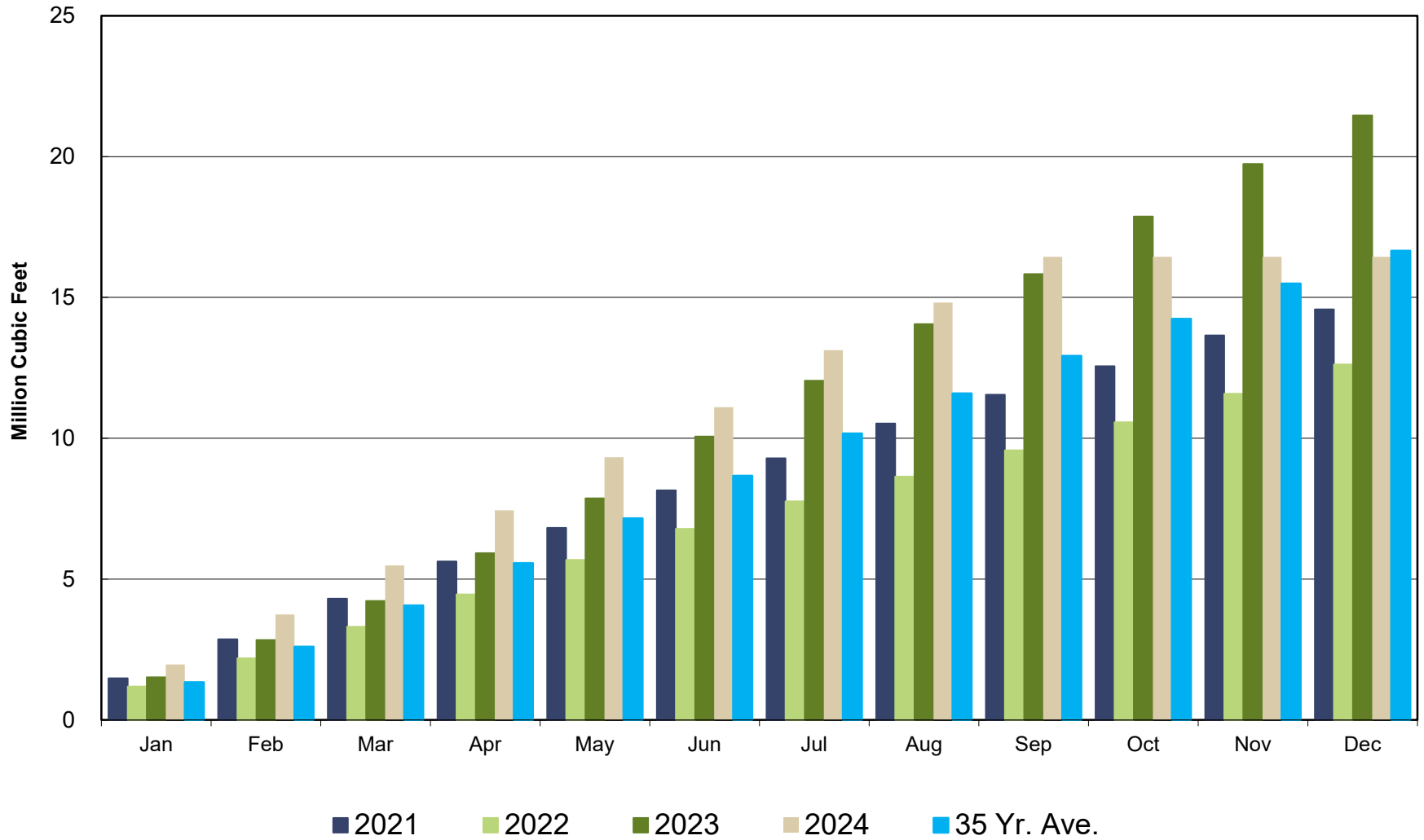
# Crestline Village Water District

## Well Production by Month Comparison



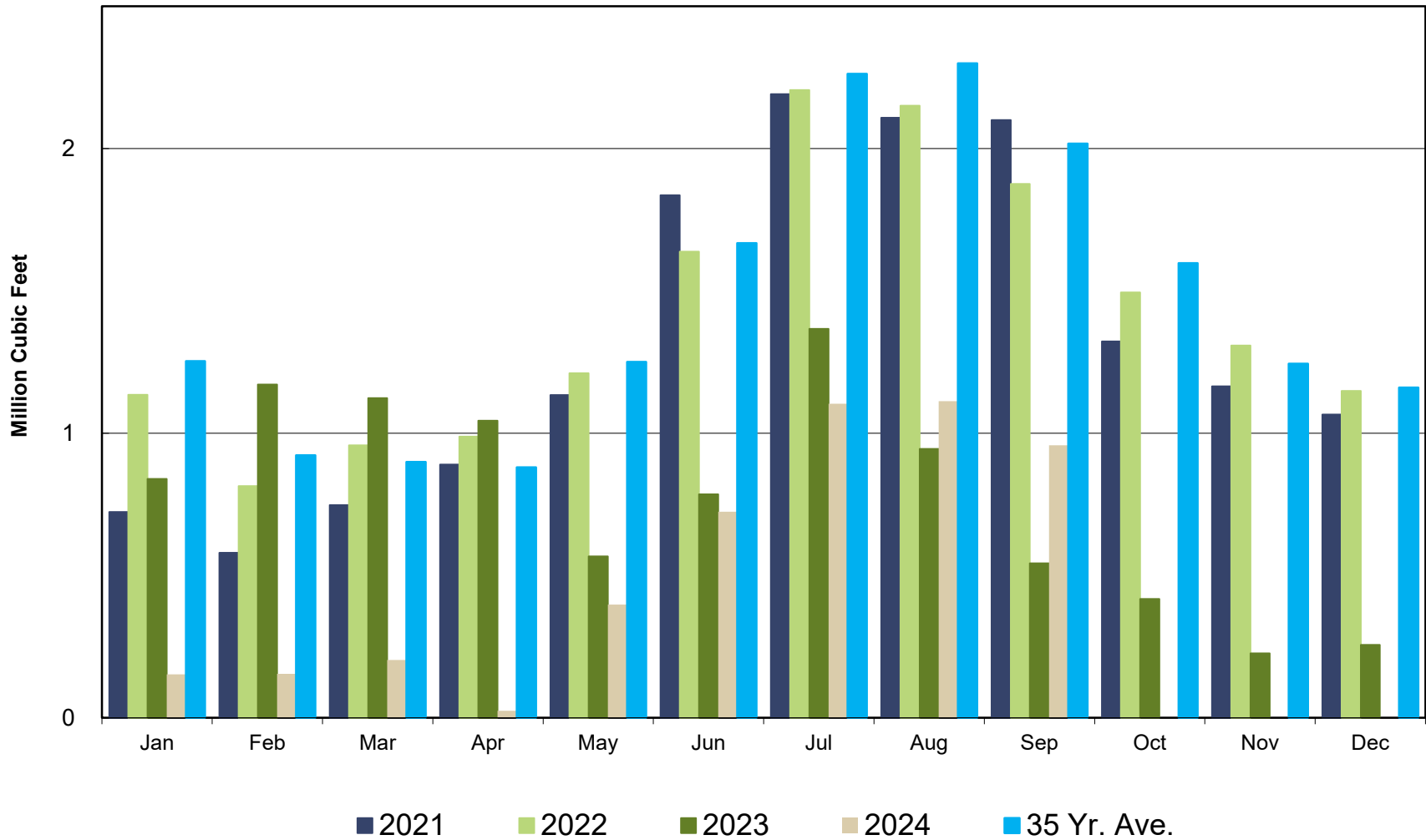
# Crestline Village Water District

## Well Production by Month Cumulative



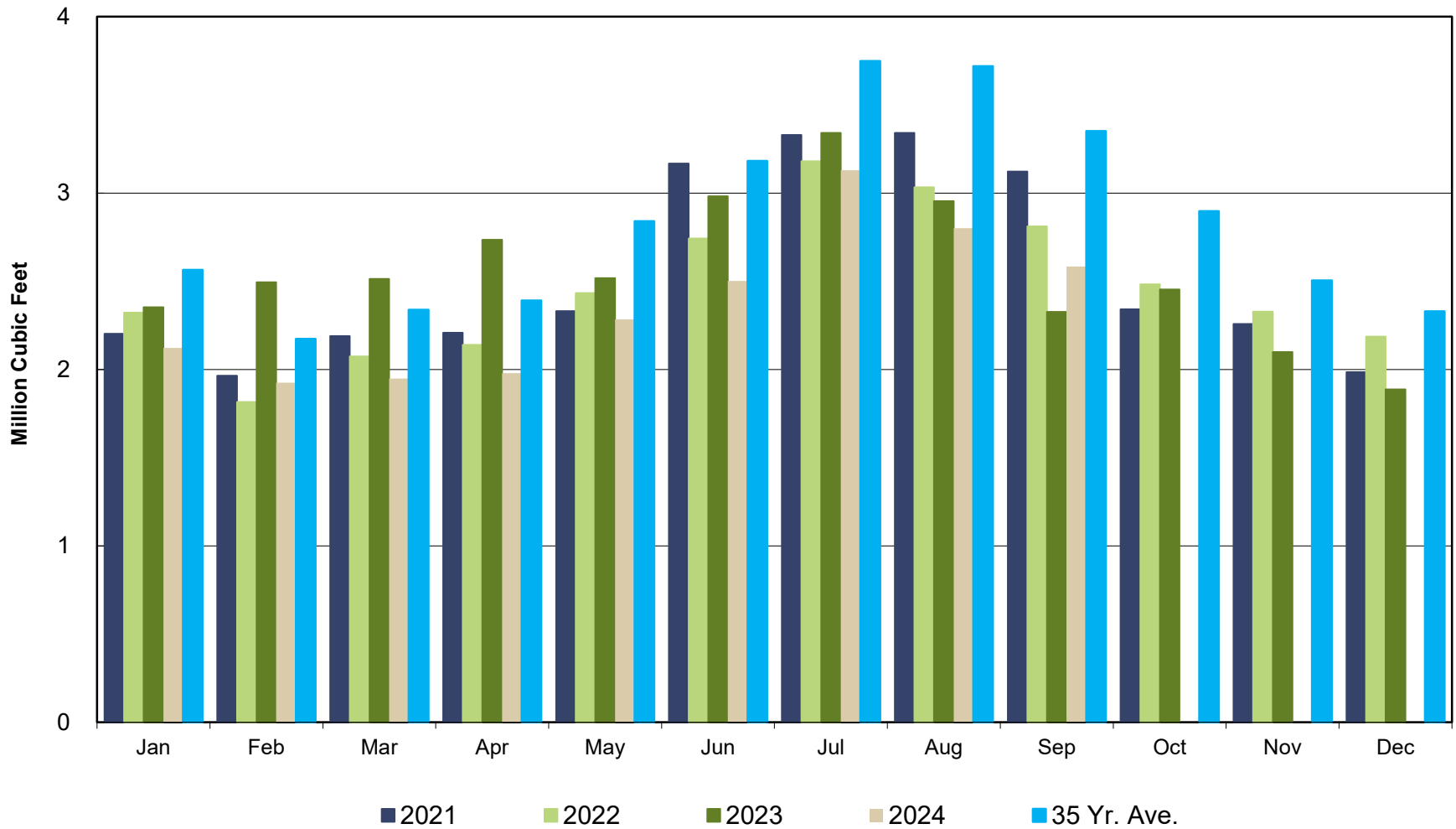
# Crestline Village Water District

## Purchased Water by Month Comparison



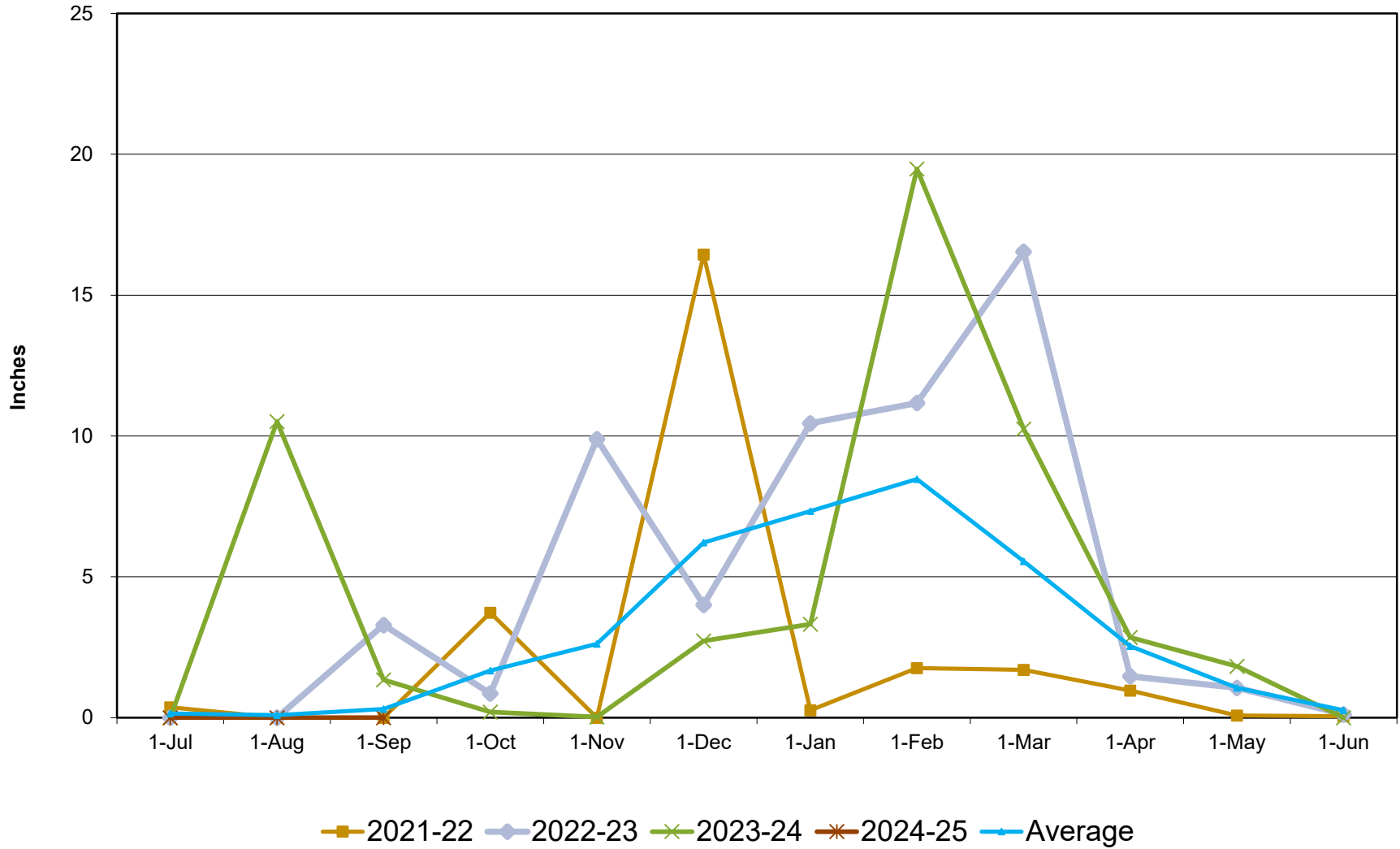
# Crestline Village Water District

## Total Production by Month Comparison



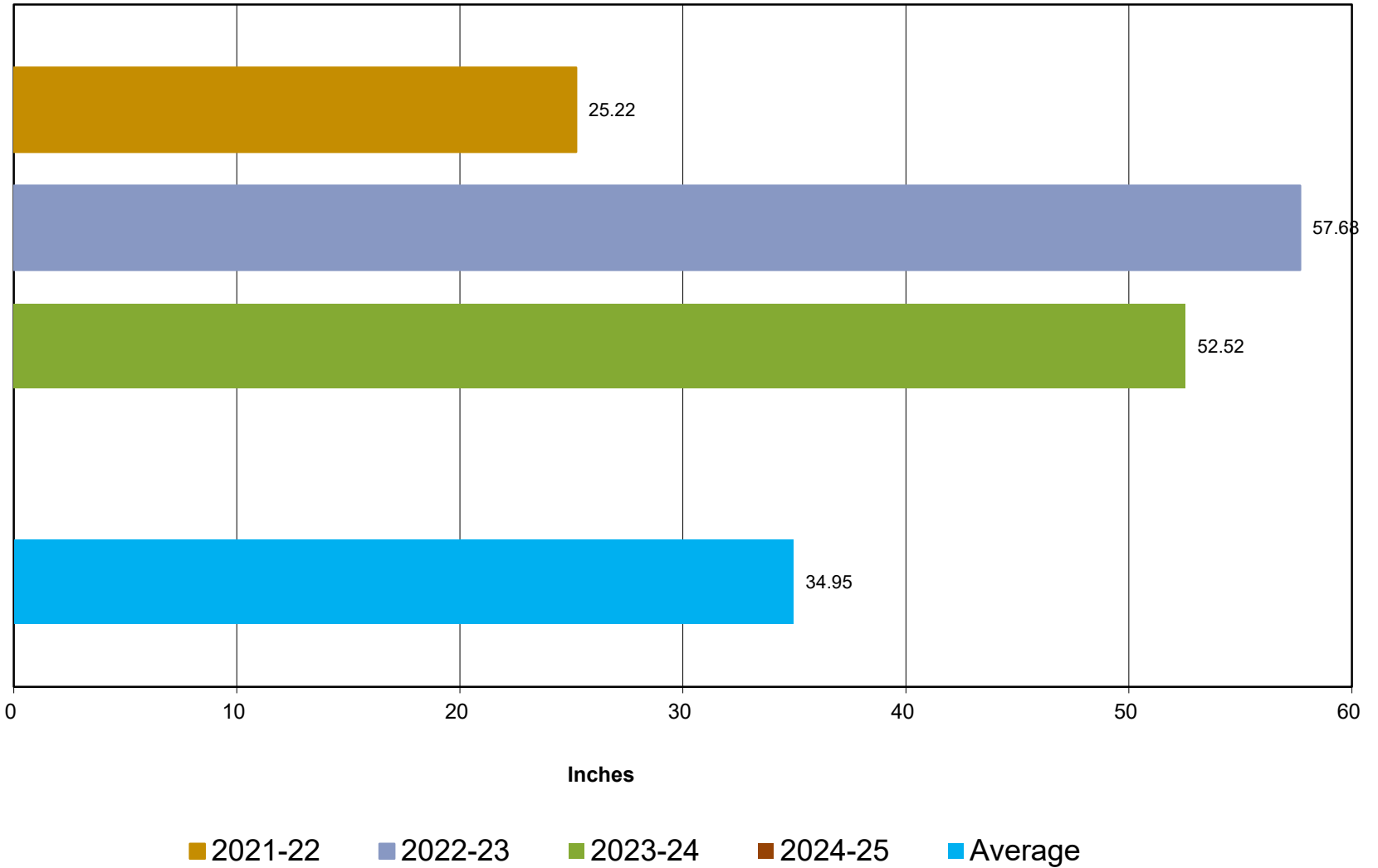
# Crestline Village Water District

## Rainfall Jul 1-Jun 30



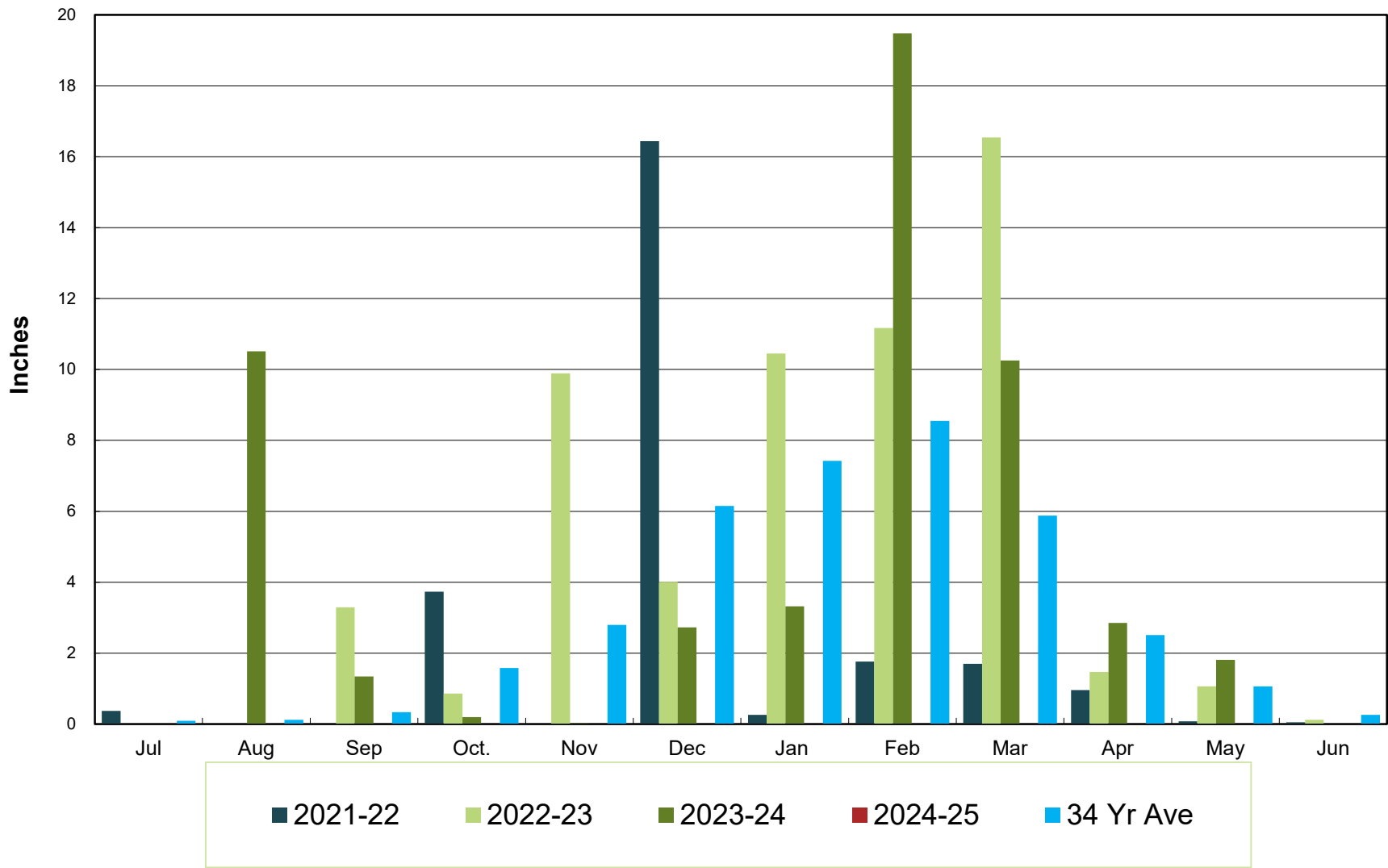
# Crestline Village Water District

## Total Rainfall Jul 1- Jun 30



# Crestline Village Water District

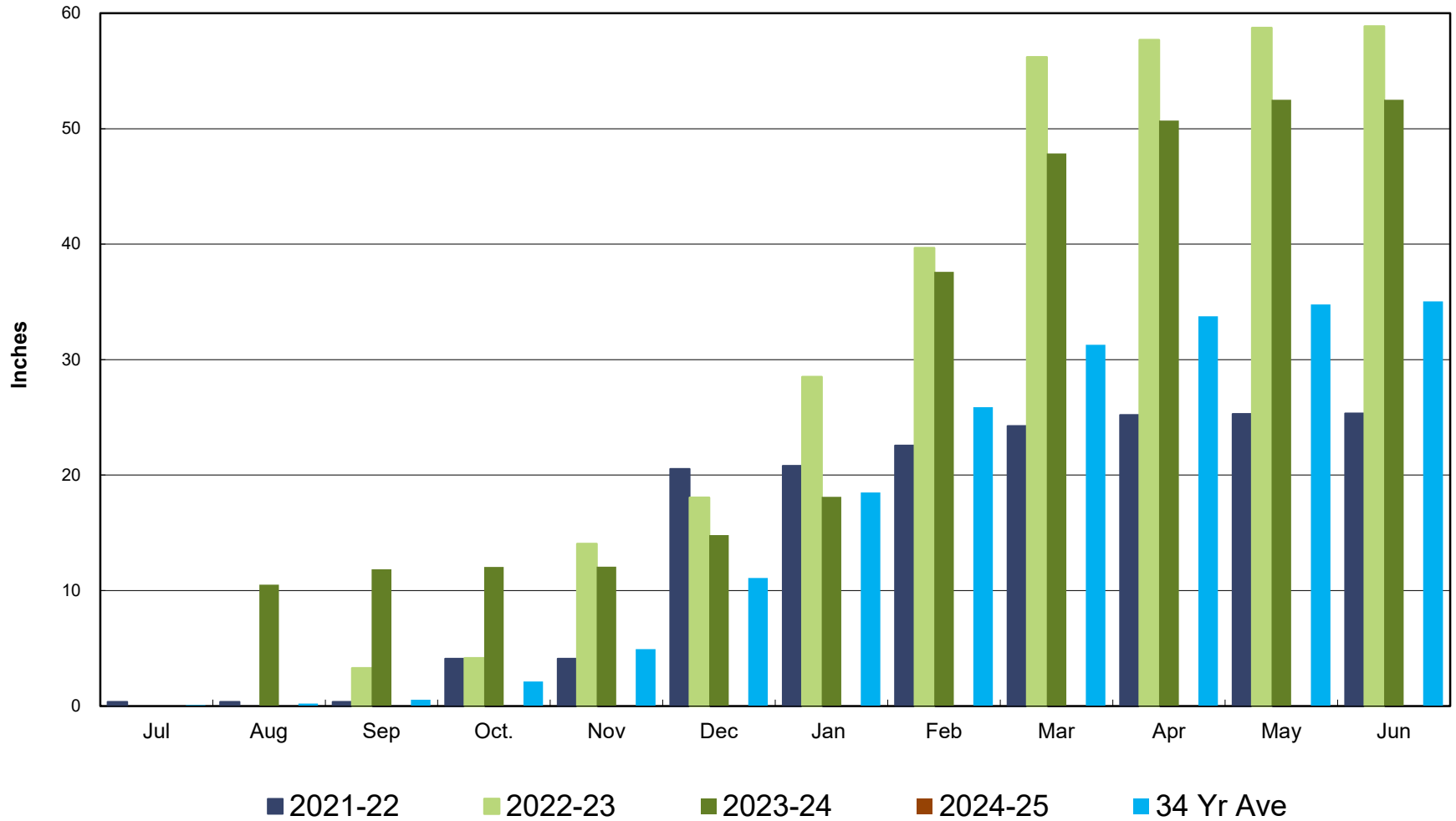
## Rainfall by Month





# Crestline Village Water District

## Rainfall Cumulative



**Crestline Village Water District**  
**Change in Water Production - Cubic Feet**  
2020 vs 2023-24

<u>2023-24 Production</u>	<u>Aug</u>	<u>Sep</u>	<u>Oct</u>	<u>Nov</u>	<u>Dec</u>	<u>Jan</u>	<u>Feb</u>	<u>Mar</u>	<u>Apr</u>	<u>May</u>	<u>Jun</u>	<u>Jul</u>	<u>Aug</u>	<u>Sep</u>	<u>Average</u>
Wells	2,008,398	1,784,165	2,035,512	1,872,134	1,719,469	1,969,762	1,771,386	1,744,554	1,954,539	1,886,560	1,777,983	2,026,665	1,687,949	1,625,304	1,839,318
CLAWA	945,080	542,487	417,313	226,243	256,324	152,607	154,105	203,128	24,733	397,380	723,864	1,102,981	1,112,309	957,335	477,360
<b>Total</b>	<b>2,953,478</b>	<b>2,326,652</b>	<b>2,452,825</b>	<b>2,098,377</b>	<b>1,975,793</b>	<b>2,122,369</b>	<b>1,925,491</b>	<b>1,947,682</b>	<b>1,979,272</b>	<b>2,283,940</b>	<b>2,501,847</b>	<b>3,129,646</b>	<b>2,800,258</b>	<b>2,582,639</b>	<b>2,316,678</b>
<b>2020 Production</b>															
Wells	1,863,039	1,724,448	1,520,142	1,573,711	1,397,987	1,790,808	1,606,207	1,837,581	1,922,894	1,936,457	2,069,986	1,740,467	1,863,039	1,724,448	1,748,644
CLAWA	1,490,709	1,410,963	1,269,277	709,571	795,000	357,741	340,374	230,214	152,380	712,554	978,249	1,827,648	1,490,709	1,410,963	856,223
<b>Total</b>	<b>3,353,748</b>	<b>3,135,411</b>	<b>2,789,419</b>	<b>2,283,282</b>	<b>2,192,987</b>	<b>2,148,549</b>	<b>1,946,581</b>	<b>2,067,795</b>	<b>2,075,274</b>	<b>2,649,011</b>	<b>3,048,235</b>	<b>3,568,115</b>	<b>3,353,748</b>	<b>3,135,411</b>	<b>2,604,867</b>
<b>Change in Production</b>															
Wells	145,359	59,717	515,370	298,423	321,482	178,954	165,179	(93,027)	31,645	(49,897)	(292,003)	286,198	(175,090)	(99,144)	90,674
CLAWA	(545,629)	(868,476)	(851,964)	(483,328)	(538,676)	(205,134)	(186,269)	(27,086)	(127,647)	(315,174)	(254,385)	(724,667)	(378,400)	(453,628)	(378,863)
<b>Total</b>	<b>(400,270)</b>	<b>(808,759)</b>	<b>(336,594)</b>	<b>(184,905)</b>	<b>(217,194)</b>	<b>(26,180)</b>	<b>(21,090)</b>	<b>(120,113)</b>	<b>(96,002)</b>	<b>(365,071)</b>	<b>(546,388)</b>	<b>(438,469)</b>	<b>(553,490)</b>	<b>(552,772)</b>	<b>(288,189)</b>
<b>Total (AF)</b>	<b>(9.19)</b>	<b>(18.57)</b>	<b>(7.73)</b>	<b>(4.24)</b>	<b>(4.99)</b>	<b>(0.60)</b>	<b>(0.48)</b>	<b>(2.76)</b>	<b>(2.20)</b>	<b>(8.38)</b>	<b>(12.54)</b>	<b>(10.07)</b>	<b>(12.71)</b>	<b>(12.69)</b>	<b>(6.62)</b>

**Crestline Village Water District**  
**Change in Total Water Consumption - Cubic Feet**  
2020 vs 2023-24

<u>2023-24 Total Consumption</u>	<u>Aug</u>	<u>Sep</u>	<u>Oct</u>	<u>Nov</u>	<u>Dec</u>	<u>Jan</u>	<u>Feb</u>	<u>Mar</u>	<u>Apr</u>	<u>May</u>	<u>Jun</u>	<u>Jul</u>	<u>Aug</u>	<u>Sep</u>	<u>Total</u>
Cubic Feet	2,686,400	2,359,599	2,120,401	2,056,200	1,917,150	1,839,915	1,795,615	1,570,585	1,739,690	1,905,983	2,182,219	2,431,800	2,539,780	2,315,120	24,414,458
<b>Total</b>	<b>2,686,400</b>	<b>2,359,599</b>	<b>2,120,401</b>	<b>2,056,200</b>	<b>1,917,150</b>	<b>1,839,915</b>	<b>1,795,615</b>	<b>1,570,585</b>	<b>1,739,690</b>	<b>1,905,983</b>	<b>2,182,219</b>	<b>2,431,800</b>	<b>2,539,780</b>	<b>2,315,120</b>	<b>24,414,458</b>
<b>2020 Total Consumption</b>															
Cubic Feet	3,005,506	3,281,600	2,889,200	2,638,000	2,114,721	2,147,430	1,973,581	1,859,473	1,972,980	2,189,010	2,668,700	2,833,100	3,005,506	3,281,600	29,573,301
<b>Total</b>	<b>3,005,506</b>	<b>3,281,600</b>	<b>2,889,200</b>	<b>2,638,000</b>	<b>2,114,721</b>	<b>2,147,430</b>	<b>1,973,581</b>	<b>1,859,473</b>	<b>1,972,980</b>	<b>2,189,010</b>	<b>2,668,700</b>	<b>2,833,100</b>	<b>3,005,506</b>	<b>3,281,600</b>	<b>29,573,301</b>
<b>Change in Total Consumption</b>															<u>Average</u>
Cubic Feet	(319,106)	(922,001)	(768,799)	(581,800)	(197,571)	(307,515)	(177,966)	(288,888)	(233,290)	(283,027)	(486,481)	(401,300)	(465,726)	(966,480)	(429,904)
<b>Cubic Feet</b>	<b>(319,106)</b>	<b>(922,001)</b>	<b>(768,799)</b>	<b>(581,800)</b>	<b>(197,571)</b>	<b>(307,515)</b>	<b>(177,966)</b>	<b>(288,888)</b>	<b>(233,290)</b>	<b>(283,027)</b>	<b>(486,481)</b>	<b>(401,300)</b>	<b>(465,726)</b>	<b>(966,480)</b>	<b>(429,904)</b>
<b>Total (AF)</b>	<b>(7.33)</b>	<b>(21.17)</b>	<b>(17.65)</b>	<b>(13.36)</b>	<b>(4.54)</b>	<b>(7.06)</b>	<b>(4.09)</b>	<b>(6.63)</b>	<b>(5.36)</b>	<b>(6.50)</b>	<b>(11.17)</b>	<b>(9.21)</b>	<b>(10.69)</b>	<b>(22.19)</b>	<b>(9.87)</b>
<b>% Change</b>	-10.62%	-28.10%	-26.61%	-22.05%	-9.34%	-14.32%	-9.02%	-15.54%	-11.82%	-12.93%	-18.23%	-14.16%	-15.50%	-29.45%	-16.58%
<b>Total</b>	<b>-10.62%</b>	<b>-28.10%</b>	<b>-26.61%</b>	<b>-22.05%</b>	<b>-9.34%</b>	<b>-14.32%</b>	<b>-9.02%</b>	<b>-15.54%</b>	<b>-11.82%</b>	<b>-12.93%</b>	<b>-18.23%</b>	<b>-14.16%</b>	<b>-15.50%</b>	<b>-29.45%</b>	<b>-16.58%</b>

**Crestline Village Water District**  
**Gallons Per Capita Daily Calculation**

	<u>Aug</u>	<u>Sep</u>	<u>Oct</u>	<u>Nov</u>	<u>Dec</u>	<u>Jan</u>	<u>Feb</u>	<u>Mar</u>	<u>Apr</u>	<u>May</u>	<u>Jun</u>	<u>Jul</u>	<u>Aug</u>	<u>Sep</u>	<u>Average</u>
Residential Services with 92325 Zip	3,863	3,863	3,863	3,863	3,863	3,863	3,863	3,863	3,863	3,863	3,863	3,863	3,863	3,863	3,863
People per Household	2.47	2.47	2.47	2.47	2.47	2.47	2.47	2.47	2.47	2.47	2.47	2.47	2.47	2.47	2.47
Est. Full-Time Population	9,542	9,542	9,542	9,542	9,542	9,542	9,542	9,542	9,542	9,542	9,542	9,542	9,542	9,542	9,542
Days Per Month	31	30	31	30	31	31	29	31	30	31	30	31	31	30	31
Gallons Water Produced	22,092,015	17,403,357	18,347,131	15,695,860	14,778,932	15,875,320	14,402,673	14,568,661	14,804,955	17,083,871	18,713,816	23,409,752	20,945,930	19,318,140	17,328,753
92325 Residential Water Usage (CF)	2,167,300	1,945,800	1,769,000	1,754,500	1,668,200	1,665,965	1,622,800	1,428,400	1,569,590	1,556,810	1,886,700	2,026,100	2,290,100	2,146,500	1,765,330
% Residential Water	80.7%	82.5%	83.4%	85.3%	87.0%	90.6%	90.4%	91.0%	90.2%	81.7%	86.5%	83.3%	90.2%	92.7%	86.83%
<b>Gallons Per Capita Daily - 2022/23</b>	<b>74.69</b>	<b>60.80</b>	<b>62.03</b>	<b>54.83</b>	<b>49.96</b>	<b>53.67</b>	<b>52.05</b>	<b>49.25</b>	<b>51.72</b>	<b>57.75</b>	<b>65.37</b>	<b>79.14</b>	<b>70.81</b>	<b>67.48</b>	<b>59.51</b>
<b>R - Gallons Per Capita Daily - 2022/23</b>	<b>60.26</b>	<b>50.13</b>	<b>51.75</b>	<b>46.79</b>	<b>43.47</b>	<b>48.60</b>	<b>47.04</b>	<b>44.79</b>	<b>46.66</b>	<b>47.17</b>	<b>56.52</b>	<b>65.94</b>	<b>63.85</b>	<b>62.57</b>	<b>52.10</b>

	<u>Aug</u>	<u>Sep</u>	<u>Oct</u>	<u>Nov</u>	<u>Dec</u>	<u>Jan</u>	<u>Feb</u>	<u>Mar</u>	<u>Apr</u>	<u>May</u>	<u>Jun</u>	<u>Jul</u>	<u>Aug</u>	<u>Sep</u>	<u>Average</u>
Residential Services with 92325 Zip	3,863	3,863	3,863	3,863	3,863	3,863	3,863	3,863	3,863	3,863	3,863	3,863	3,863	3,863	3,863
People per Household	2.47	2.47	2.47	2.47	2.47	2.47	2.47	2.47	2.47	2.47	2.47	2.47	2.47	2.47	2.47
Est. Full-Time Population	9,542	9,542	9,542	9,542	9,542	9,542	9,542	9,542	9,542	9,542	9,542	9,542	9,542	9,542	9,542
Days Per Month	31	30	31	30	31	31	29	31	30	31	30	31	31	30	31
Gallons Water Produced	25,086,035	23,452,874	20,864,854	17,078,949	16,403,543	16,071,147	14,560,426	15,467,107	15,523,050	19,814,602	22,800,798	26,689,500	25,086,035	23,452,874	19,484,407
92325 Residential Water Usage (CF)	2,551,906	2,752,100	2,421,300	2,219,900	1,910,021	1,846,800	1,735,931	1,562,890	1,715,180	1,967,800	2,263,800	2,357,300	2,551,906	2,752,100	25,304,928
% Residential Water	84.9%	83.9%	83.8%	84.2%	90.3%	86.0%	88.0%	84.1%	86.9%	89.9%	84.8%	83.2%	84.9%	83.9%	85.83%
<b>Gallons Per Capita Daily - 2020</b>	<b>84.81</b>	<b>81.93</b>	<b>70.54</b>	<b>59.66</b>	<b>55.45</b>	<b>54.33</b>	<b>52.62</b>	<b>52.29</b>	<b>54.23</b>	<b>66.99</b>	<b>79.65</b>	<b>90.23</b>	<b>84.81</b>	<b>81.93</b>	<b>66.89</b>
<b>R - Gallons Per Capita Daily - 2020</b>	<b>72.01</b>	<b>68.71</b>	<b>59.12</b>	<b>50.21</b>	<b>50.09</b>	<b>46.72</b>	<b>46.28</b>	<b>43.95</b>	<b>47.14</b>	<b>60.21</b>	<b>67.57</b>	<b>75.08</b>	<b>72.01</b>	<b>68.71</b>	<b>57.26</b>
<b>Change R-GPCD 2020-2023</b>	<b>(11.75)</b>	<b>(18.57)</b>	<b>(7.37)</b>	<b>(3.42)</b>	<b>(6.61)</b>	<b>1.87</b>	<b>0.76</b>	<b>0.85</b>	<b>(0.48)</b>	<b>(13.04)</b>	<b>(11.05)</b>	<b>(9.14)</b>	<b>(8.16)</b>	<b>(6.13)</b>	<b>(5.16)</b>
<b>% Change</b>	<b>-16.32%</b>	<b>-27.03%</b>	<b>-12.47%</b>	<b>-6.81%</b>	<b>-13.21%</b>	<b>4.01%</b>	<b>1.64%</b>	<b>1.92%</b>	<b>-1.02%</b>	<b>-21.66%</b>	<b>-16.35%</b>	<b>-12.17%</b>	<b>-11.33%</b>	<b>-8.93%</b>	<b>-9.01%</b>