

### Crestline Village Water District Source of Supply Production Report System Loss - Last 13 Months In Cubic Feet

	January	February	March	April	May	June	July	August	September	October	November	December	January	Average
Sources of Supply														
Wells	1,969,762	1,771,386	1,744,554	1,954,539	1,886,560	1,777,983	2,026,665	1,687,949	1,625,304	1,720,212	1,516,541	1,664,637	1,329,313	1,769,805
Purchased Water	152,607	154,105	203,128	24,733	397,380	723,864	1,102,981	1,112,309	957,335	910,316	498,006	526,897	575,008	516,532
Adjustment to Wells *	0	0	0	0	0	0	0	0	0	0	0	0	0	0
<b>Total Water Supplied</b>	<b>2,122,369</b>	<b>1,925,491</b>	<b>1,947,682</b>	<b>1,979,272</b>	<b>2,283,940</b>	<b>2,501,847</b>	<b>3,129,646</b>	<b>2,800,258</b>	<b>2,582,639</b>	<b>2,630,528</b>	<b>2,014,547</b>	<b>2,191,534</b>	<b>1,904,321</b>	<b>2,308,775</b>

Water Used **														
Metered Accounts														
Crestline Area	835,015	850,800	794,400	810,311	903,070	1,050,819	1,110,500	1,150,080	987,720	1,162,200	888,600	1,153,900	926,100	974,590
Lake Gregory Area	1,004,900	944,815	1,222,800	817,787	1,002,913	1,131,400	1,321,300	1,389,700	1,327,400	1,169,600	1,035,300	1,016,000	1,020,800	1,102,217
Change in Storage	(28,203)	53,567	(43,075)	(19,616)	(17,506)	63,543	(16,001)	(13,116)	1,750	31,068	25,271	(93,467)	43,640	(4,120)
Flushing, System & Other	2,984	2,791	11,031	23,289	22,984	3,556	3,318	16,213	2,888	23,075	1,909	281	2,984	9,058

<b>Accounted for Water</b>	<b>1,814,696</b>	<b>1,851,973</b>	<b>1,985,156</b>	<b>1,631,771</b>	<b>1,911,461</b>	<b>2,249,318</b>	<b>2,419,117</b>	<b>2,542,877</b>	<b>2,319,758</b>	<b>2,385,943</b>	<b>1,951,080</b>	<b>2,076,714</b>	<b>1,993,524</b>	<b>2,081,744</b>
----------------------------	------------------	------------------	------------------	------------------	------------------	------------------	------------------	------------------	------------------	------------------	------------------	------------------	------------------	------------------

Month to Month Averaging ***														
<b>System Loss (CF)</b>	307,673	73,518	(37,474)	347,501	372,479	252,529	710,529	257,381	262,881	244,585	63,467	114,820	(89,203)	221,591
<b>System Loss (%)</b>	14.5%	3.8%	-1.9%	17.6%	16.3%	10.1%	22.7%	9.2%	10.2%	9.3%	3.2%	5.2%	-4.7%	8.9%
<b>System Loss (GPM)</b>	48.4	13.2	(6.7)	58.2	60.5	46.8	111.8	44.6	44.0	41.0	11.4	18.6	(14.9)	36.7

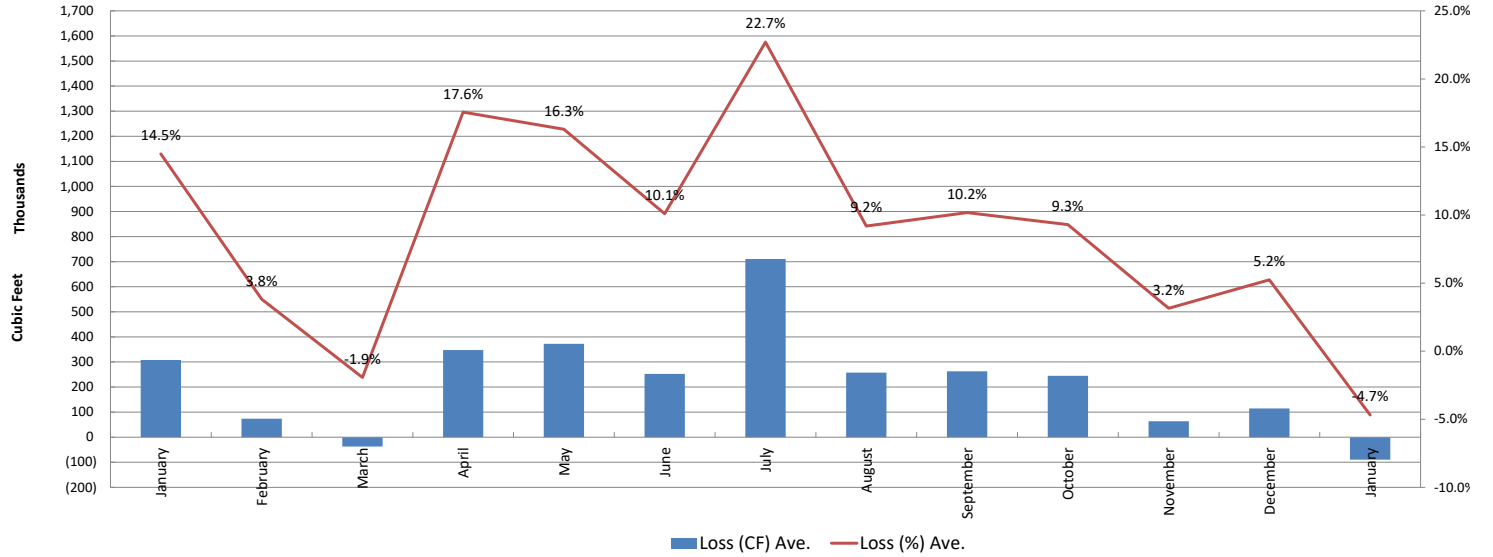
Month to Month Averaging ***														
<b>System Loss (CF)</b>	180,327	190,596	18,022	155,014	359,990	312,504	481,529	483,955	260,131	253,733	154,026	89,143	12,808	230,954
<b>System Loss (%)</b>	8.6%	9.2%	0.9%	7.8%	16.9%	13.2%	16.4%	15.9%	9.7%	9.7%	6.2%	4.2%	0.3%	9.2%
<b>System Loss (GPM)</b>	29.0	30.8	3.2	25.8	59.3	53.7	79.3	78.2	44.3	42.5	26.2	15.0	1.8	37.6

Estimated Uses														
Known leaks - Est. loss	0	0	5,329	1,952	689	1,893	54,261	9,433	1,005	3,005	1,909	281	193	6,150
<b>Total Estimated Losses</b>	<b>2,984</b>	<b>2,791</b>	<b>16,360</b>	<b>25,241</b>	<b>23,673</b>	<b>5,449</b>	<b>57,579</b>	<b>25,646</b>	<b>3,893</b>	<b>26,080</b>	<b>47,899</b>	<b>54,602</b>	<b>3,177</b>	<b>21,344</b>
<b>Unaccounted for Water (CF)</b>	<b>307,673</b>	<b>73,518</b>	<b>(37,474)</b>	<b>347,501</b>	<b>372,479</b>	<b>252,529</b>	<b>710,529</b>	<b>257,381</b>	<b>262,881</b>	<b>244,585</b>	<b>63,467</b>	<b>114,820</b>	<b>(89,203)</b>	<b>221,591</b>
<b>Unaccounted For (%)</b>	<b>14.5%</b>	<b>3.8%</b>	<b>-1.9%</b>	<b>17.6%</b>	<b>16.3%</b>	<b>10.1%</b>	<b>22.7%</b>	<b>9.2%</b>	<b>10.2%</b>	<b>9.3%</b>	<b>3.2%</b>	<b>5.2%</b>	<b>-4.7%</b>	<b>8.9%</b>
<b>Unaccounted For (GPM)</b>	<b>48.4</b>	<b>13.2</b>	<b>(6.7)</b>	<b>58.2</b>	<b>60.5</b>	<b>46.8</b>	<b>111.8</b>	<b>44.6</b>	<b>44.0</b>	<b>41.0</b>	<b>11.4</b>	<b>18.6</b>	<b>(14.9)</b>	<b>38</b>
Number of Days in Period	31	29	29	31	31	30	30	30	30	31	29	32	31	30

	System Loss Costs		This Month	Average
			Cost of System Loss:	(\$3,211)
		Cost of 5% System Loss:	\$4,735	\$4,156
		<b>Amount above (below) 5% System Loss</b>	<b>(\$7,946)</b>	<b>\$4,158</b>
Note: Cost is calculated at highest cost (CLAWA Rate: \$3.60/100 c.f.)				

# Crestline Village Water District

System Loss Last 13 Months  
Month to Month



# Crestline Village Water District

System Loss Last 13 Months  
With Month to Month Averaging

