

**Crestline Village Water District
Source of Supply Production Report
System Loss - Last 13 Months
In Cubic Feet**

10/13/17

	Sept	Oct	Nov	Dec	Jan '17	Feb	Mar	Apr	May	June	July	August	Sept	Total
Sources of Supply														
Wells	765,105	700,645	722,247	653,020	778,620	898,292	1,305,512	1,277,540	1,559,470	1,269,163	1,381,209	1,344,721	1,207,963	13,863,507
Purchased Water	1,942,165	1,791,444	1,420,053	1,363,770	1,388,503	950,936	701,884	647,139	818,102	1,332,701	1,820,321	1,504,277	1,241,309	16,922,604
Adjustment to Wells *	0	0	0	0	0	0	0	0	0	0	0	0	0	0
Total Water Supplied	2,707,270	2,492,089	2,142,300	2,016,790	2,167,123	1,849,228	2,007,396	1,924,679	2,377,572	2,601,864	3,201,530	2,848,998	2,449,272	30,786,111
Water Used **														
Metered Accounts														
Crestline Area	1,159,217	1,049,772	920,956	894,009	921,219	797,663	882,949	870,336	1,091,651	1,156,702	1,308,089	1,258,165	1,094,458	13,405,186
Lake Gregory Area	1,298,386	1,330,923	1,035,068	964,569	1,043,759	835,789	920,132	891,457	1,129,907	1,159,206	1,468,103	1,398,841	1,059,138	14,535,278
Change in Storage	(5,327)	(3,701)	(12,883)	(61,470)	71,324	19,087	(64,285)	(1,349)	(54,056)	45,388	8,687	6,512	22,568	(29,505)
Flushing, System & Other	15,829	14,439	15,041	18,450	14,439	14,439	17,567	44,940	17,333	21,254	24,737	15,107	15,625	249,201
Accounted for Water	2,468,105	2,391,433	1,958,182	1,815,558	2,050,741	1,666,978	1,756,363	1,805,384	2,184,835	2,382,550	2,809,616	2,678,625	2,191,789	28,160,160
System Loss (CF)	239,165	100,656	184,118	201,232	116,382	182,250	251,033	119,295	192,737	219,314	391,914	170,373	257,483	2,625,951
System Loss (%)	8.8%	4.0%	8.6%	10.0%	5.4%	9.9%	12.5%	6.2%	8.1%	8.4%	12.2%	6.0%	10.5%	8.5%
System Loss (GPM)	41.4	16.9	31.9	34.8	18.9	33.8	42.1	22.1	30.3	38.0	65.7	28.5	46.1	34.4
Month to Month Averaging ***														
System Loss (CF)	119,583	169,911	142,387	192,675	158,807	149,316	216,642	185,164	156,016	206,026	305,614	281,143	213,928	2,497,212
System Loss (%)	4.4%	6.4%	6.3%	9.3%	7.7%	7.6%	11.2%	9.4%	7.2%	8.3%	10.3%	9.1%	8.2%	8.1%
System Loss (GPM)	20.7	29.1	24.4	33.4	26.9	26.4	37.9	32.1	26.2	34.2	51.8	47.1	37.3	32.8
Estimated Uses														
Known leaks - Est. loss	3,850	3,658	0	674	866	1,925	28,107	144	0	2,743	5,567	13,947	3,294	64,775
Total Estimated Uses	3,850	3,658	0	674	866	1,925	28,107	144	0	2,743	5,567	13,947	3,294	64,775
Unaccounted for Water (CF)	235,315	96,998	184,118	200,559	115,516	180,325	222,926	119,151	192,737	216,571	386,347	156,426	254,189	2,561,176
Unaccounted For (%)	8.7%	3.9%	8.6%	9.9%	5.3%	9.8%	11.1%	6.2%	8.1%	8.3%	12.1%	5.5%	10.4%	8.3%
Unaccounted For (GPM)	40.7	16.3	31.9	34.7	18.8	33.5	37.4	22.1	30.3	37.5	64.7	26.2	45.5	33.6
Number of Days in Period	30	31	30	30	32	28	31	28	33	30	31	31	29	396

NOTES:

Estimated - Includes estimated billing period. This month includes estimated consumption. The following billing period will reflect adjustments to actual water used.

* - Currently there are no Adjustments to Wells being made.

** - Water Used - Metered Accounts is adjusted to the time period in Total Water Supplied

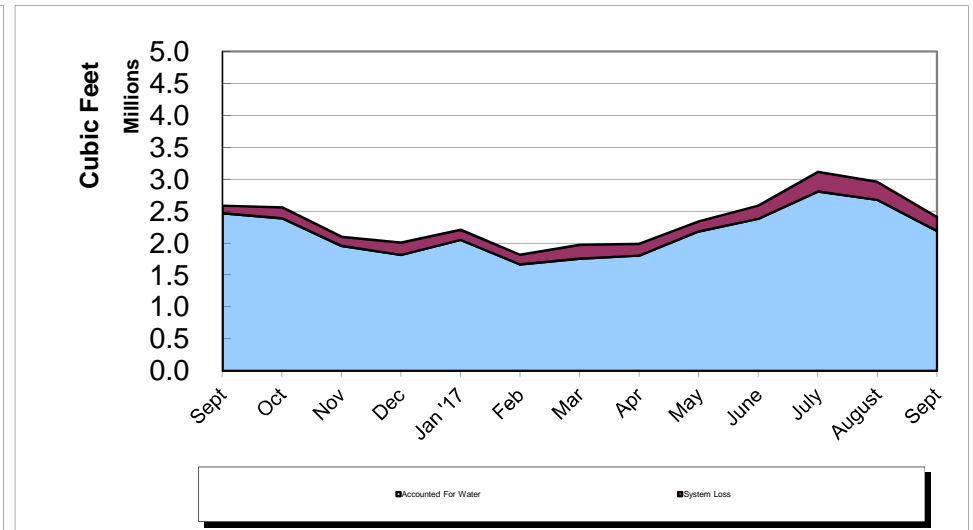
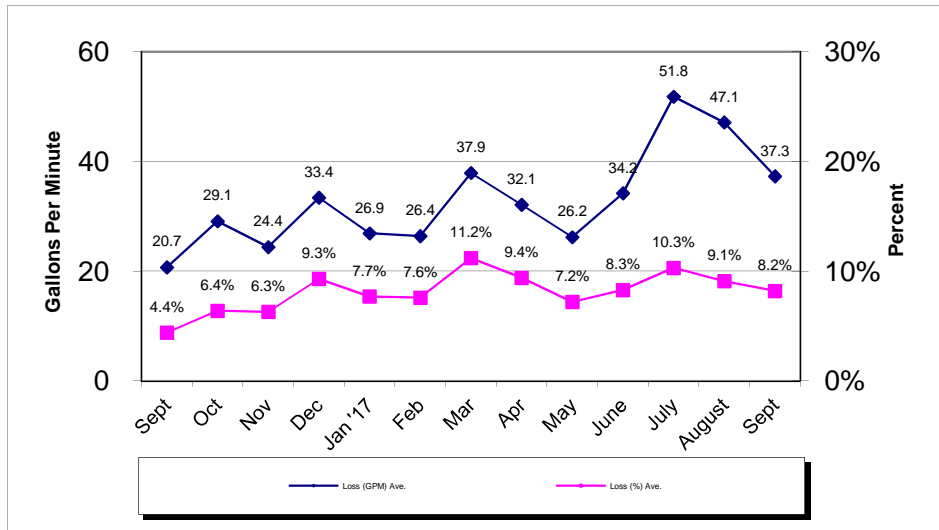
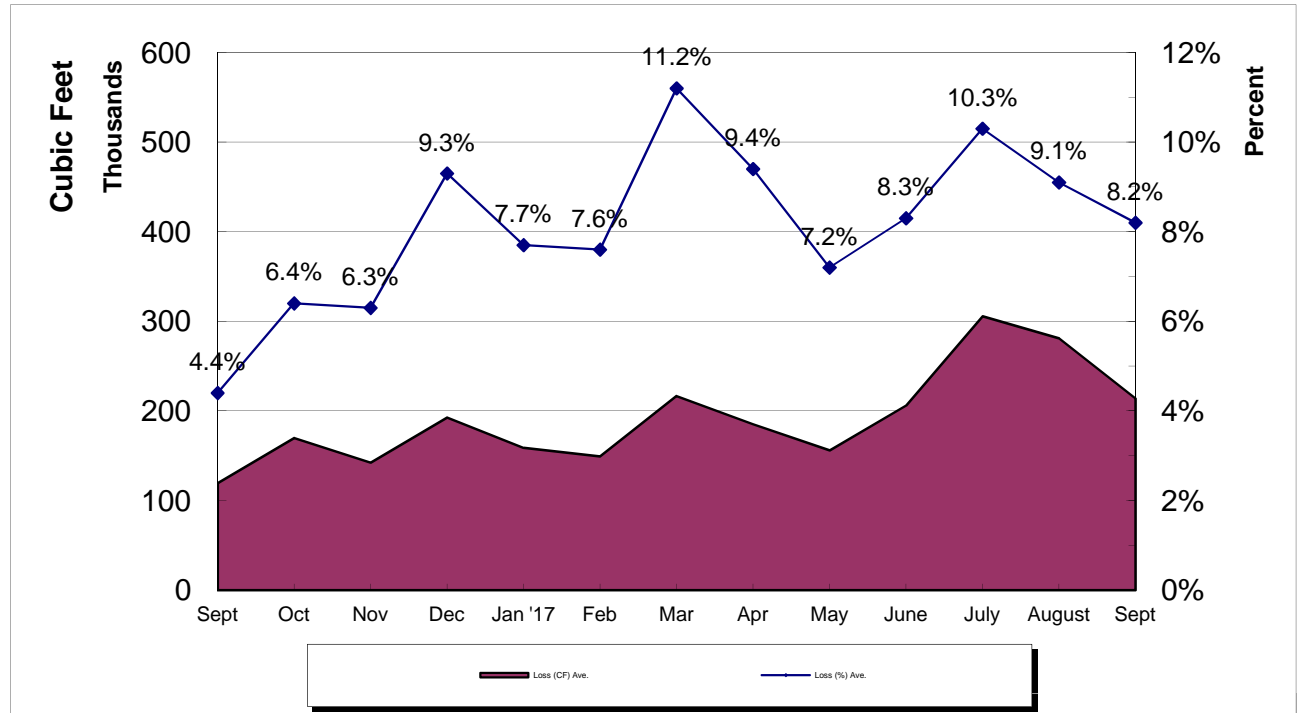
*** - Month to Month averaging averages the System Loss for each period with the immediately prior period for trending purposes.

System Loss Costs	This Month	Average
Cost of System Loss:	\$5,648	\$5,071
Cost of 5% System Loss:	3,233	3,126
Amount above (below) 5% System Loss	\$2,415	\$1,945
Note: Cost is calculated at highest cost (CLAWA Rate: \$2.64/100 c.f.)		

Crestline Village Water District

System Loss Last 13 Months

With Month to Month Averaging



Crestline Village Water District
System Report on: 09/29/17

For Month of: September 2017

Water Storage (Gal)	Capacity	Gallons/ Foot	Level (FT)	Current Storage	% of Capacity
Beacon I & II	385,354	16,754	20.37	341,279	88.56%
Saxon	337,674	14,681	16.76	246,054	72.87%
Pinecrest I & II	2,063,492	54,302	34.54	1,875,591	90.89%
Zurich	380,500	16,910	19.13	323,488	85.02%
Lakeview	1,230,212	27,959	41.02	1,146,878	93.23%
Old Mill	705,900	27,150	21.72	589,698	83.54%
Barn	444,443	19,753	18.36	362,665	81.60%
Wilson	983,681	33,920	22.17	752,006	76.45%
Chillon	337,674	14,681	16.18	237,539	70.35%
Brookside	748,067	28,772	21.16	608,816	81.39%
Chamois	1,026,532	39,482	21.88	863,866	84.15%
Total	8,643,529		253.29	7,347,880	85.01%

WELLS	Production M-T-D (Cubic Feet)	Status
Altdorf	58,548	On
Pioneer-2	37,980	On
Pioneer-1	31,175	On
Old Mill Springs	34,420	On
Maple Springs	15,072	On
Willow Springs	27,650	On
Brookside Springs	0	Off
Hillside Springs	13,770	On
Pinecrest 1 & 2	64,630	On
Pinecrest Vertical	144,300	On
Cypress Vertical	90,150	On
Anderson Vertical	125,244	On
Wilson Springs 1 & 2	110,096	On
Wilson Vertical	135,132	On
Felsen Vertical	148,289	On
Horst	63,506	On
Jewel 64	68,620	On
Cathcart	22,401	On
Bergschrund	16,980	On
Chamois	0	Off
Chamois Vertical	0	Off
	0	0
	0	0
	0	0
Lewter	0	Off
Total	1,207,963	

C.L.A.W.A.	FLOWS - GPM				Production M-T-D (Cubic Feet)
	Timed	Requested	Variance	% Variance	
CF - Crestline	45	50	(5)	-10.00%	289,037
Mile High 2"	0	0	0	0.00%	0
Mile High 4"	42	40	2	5.00%	233,422
Pinecrest 2"	0	0	0	0.00%	0
Pinecrest 4"	119	120	(1)	-0.83%	699,465
Lake Drive 2"	0	0	0	0.00%	0
Lake Drive 4"	0	0	0	0.00%	0
Camp Seely	9	0	9	0.00%	19,385
Total	206	210	(4)	-1.90%	1,241,309

September Purchases	GPM	Cubic Feet	Wells	GPM	Cubic Feet
Last Year M-T-D:	300.1	1,675,425		126.8	707,910
Actual M-T-D:	222.3	1,241,309		216.4	1,207,963
Over/(Under) Last Year:	(77.8)	(434,116.0)		89.6	500,053.0

Total	GPM	Cubic Feet
Last Year M-T-D:	426.9	2,383,335
Actual M-T-D:	438.7	2,449,272
Over/(Under) Last Year:	11.8	65,937.0

**Crestline Village Water District
Source of Supply Production Report
Cubic Feet
Last 13 Months**

10/12/17

<u>Source Name</u>	<u>September</u>	<u>October</u>	<u>November</u>	<u>December</u>	<u>January '17</u>	<u>February</u>	<u>March</u>	<u>April</u>	<u>May</u>	<u>June</u>	<u>July</u>	<u>August</u>	<u>September</u>	<u>Last 12 Months</u>	<u>13 Months</u>
Division 10															
Altdorf	49,063	49,621	47,451	49,232	88,387	87,143	87,303	5,952	76,194	65,866	65,173	63,462	58,548	744,332	793,395
Pioneer #2	33,202	33,558	32,463	32,122	36,621	35,712	40,847	24,155	43,679	39,591	41,656	39,862	37,980	438,246	471,448
Pioneer #1	21,515	21,741	20,908	23,026	84,684	445	38,754	25,153	40,904	34,831	35,094	34,241	31,175	390,956	412,471
Old Mill Springs	12,230	11,960	10,820	10,900	57,620	60,850	74,420	64,070	57,190	45,990	48,920	41,550	34,420	518,710	530,940
Maple Springs	839	96	0	0	1,719	0	32,944	16,328	27,498	18,512	20,779	16,253	15,072	149,201	150,040
Willow Springs	0	0	0	0	0	0	68,290	54,070	51,180	39,370	35,200	31,420	27,650	307,180	307,180
Brookside Springs	3,400	3,740	2,800	0	0	0	32,000	36,710	40,440	33,050	31,880	0	0	180,620	184,020
Hillside Springs	0	0	0	0	0	0	0	0	0	0	48,050	22,820	13,770	84,640	84,640
Pinecrest	9,360	7,270	5,310	4,890	34,220	27,130	83,050	84,140	96,940	85,260	79,240	75,840	64,630	647,920	657,280
Pinecrest Vertical	113,010	47,580	109,210	83,450	97,250	92,760	146,310	164,870	205,800	181,510	179,810	168,550	144,300	1,621,400	1,734,410
Cypress Vertical	85,650	88,250	85,450	85,190	87,800	82,470	90,810	83,430	114,440	99,460	98,700	95,120	90,150	1,101,270	1,186,920
Anderson Vertical	11,341	6,205	0	0	0	119,791	136,809	130,872	149,098	136,135	137,797	134,892	125,244	1,076,843	1,088,184
Division 10 Totals	339,610	270,021	314,412	288,810	488,301	506,301	831,537	689,750	903,363	779,575	822,299	724,010	642,939	7,261,318	7,600,928
Division 20															
Wilson Springs #1 & 2	60,730	59,563	55,399	55,366	68,435	77,620	114,448	120,999	141,445	127,661	124,026	121,480	110,096	1,176,538	1,237,268
Wilson Vertical	112,200	110,200	109,400	78,300	1,300	54,300	120,130	130,227	156,623	145,137	163,704	152,704	135,132	1,357,157	1,469,357
Felsen Vertical	112,363	116,928	111,934	90,756	62,825	99,466	15,372	129,320	153,576	16,740	80,344	158,128	148,289	1,183,678	1,296,041
Horst	27,120	26,608	22,690	25,724	27,287	33,458	51,446	59,343	74,267	70,491	71,732	70,472	63,506	597,024	624,144
Jewell No. 64	62,939	66,528	62,680	64,069	72,455	69,505	82,502	64,753	74,801	74,485	71,987	73,255	68,620	845,640	908,579
Cathcart	15,773	15,967	12,652	17,745	23,477	26,872	31,016	27,489	29,895	26,126	25,982	25,020	22,401	284,642	300,415
Bergschrund	0	0	0	0	0	0	23,901	23,719	25,500	21,878	21,135	19,652	16,980	152,765	152,765
Chamois	0	0	0	0	0	0	0	0	0	0	0	0	0	0	0
Chamois Vertical	34,370	34,830	33,080	32,250	34,540	30,770	35,160	31,940	0	7,070	0	0	0	239,640	274,010
Valle	0	0	0	0	0	0	0	0	0	0	0	0	0	0	0
Chillon 64 (stand-by)	0	0	0	0	0	0	0	0	0	0	0	0	0	0	0
Government	0	0	0	0	0	0	0	0	0	0	0	0	0	0	0
Lewter	0	0	0	0	0	0	0	0	0	0	0	0	0	0	0
Division 20 Totals	425,495	430,624	407,835	364,210	290,319	391,991	473,975	587,790	656,107	489,588	558,910	620,711	565,024	5,837,084	6,262,579
Total District Sources	765,105	700,645	722,247	653,020	778,620	898,292	1,305,512	1,277,540	1,559,470	1,269,163	1,381,209	1,344,721	1,207,963	13,098,402	13,863,507
C.L.A.W.A.															
Crest Forest 6"	438,770	419,385	399,064	394,519	393,048	255,882	244,251	44,118	231,016	276,872	383,289	339,037	289,037	3,669,518	4,108,288
Mile High Park 2"	0	0	0	0	0	0	0	0	0	60,909	0	0	0	60,909	60,909
Mile High Park 4"	268,850	233,289	231,818	180,080	173,797	160,428	184,492	163,636	193,984	197,460	282,086	248,930	233,422	2,483,422	2,752,272
Pinecrest 2"	187	0	0	0	0	0	112,981	364,118	393,102	0	0	0	0	870,201	870,388
Pinecrest 4"	1,212,567	1,091,444	731,016	744,786	821,658	534,626	160,160	0	0	718,316	719,251	880,615	699,465	7,101,337	8,313,904
Lake Drive 2"	0	0	0	0	0	0	0	0	0	0	0	0	0	0	0
Lake Drive 4"	0	0	0	0	0	0	0	0	0	0	363,235	0	0	363,235	363,235
Camp Seely	21,791	47,326	58,155	44,385	0	0	0	75,267	0	79,144	72,460	35,695	19,385	431,817	453,608
C.L.A.W.A. Totals	1,942,165	1,791,444	1,420,053	1,363,770	1,388,503	950,936	701,884	647,139	818,102	1,332,701	1,820,321	1,504,277	1,241,309	14,980,439	16,922,604
Grand Totals	2,707,270	2,492,089	2,142,300	2,016,790	2,167,123	1,849,228	2,007,396	1,924,679	2,377,572	2,601,864	3,201,530	2,848,998	2,449,272	28,078,841	30,786,111

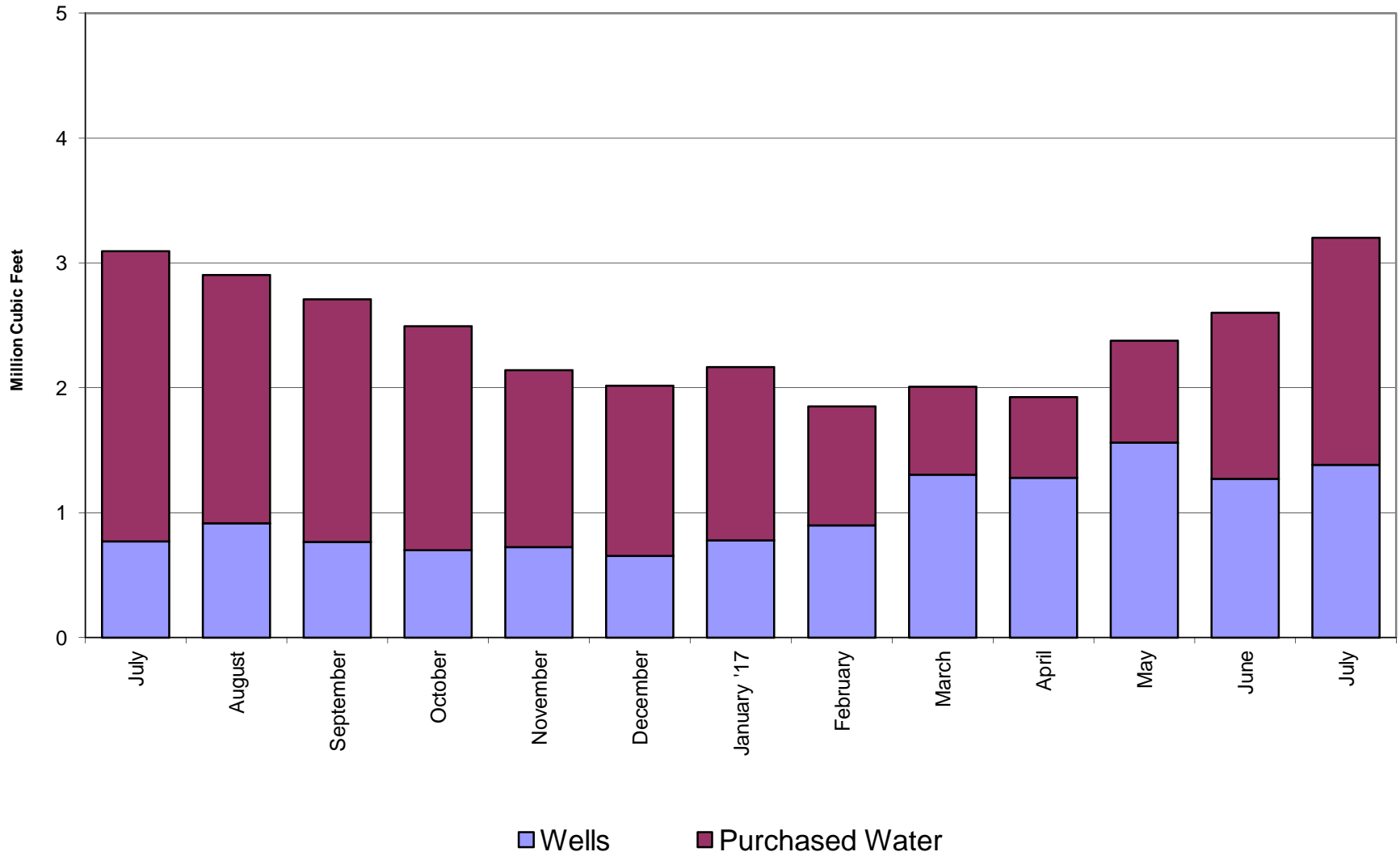
**Crestline Village Water District
Source of Supply Production Report
Cubic Feet
Last 13 Months**

10/12/17

<u>Source Name</u>	<u>September</u>	<u>October</u>	<u>November</u>	<u>December</u>	<u>January '17</u>	<u>February</u>	<u>March</u>	<u>April</u>	<u>May</u>	<u>June</u>	<u>July</u>	<u>August</u>	<u>September</u>	<u>Last 12 Months</u>	<u>13 Months</u>
District Sources															
Division 10	339,610	270,021	314,412	288,810	488,301	506,301	831,537	689,750	903,363	779,575	822,299	724,010	642,939	7,261,318	7,600,928
Division 20	425,495	430,624	407,835	364,210	290,319	391,991	473,975	587,790	656,107	489,588	558,910	620,711	565,024	5,837,084	6,262,579
Total	765,105	700,645	722,247	653,020	778,620	898,292	1,305,512	1,277,540	1,559,470	1,269,163	1,381,209	1,344,721	1,207,963	13,098,402	13,863,507
Division 10	44.39%	38.54%	43.53%	44.23%	62.71%	56.36%	63.69%	53.99%	57.93%	61.42%	59.53%	53.84%	53.23%	55.44%	54.83%
Division 20	55.61%	61.46%	56.47%	55.77%	37.29%	43.64%	36.31%	46.01%	42.07%	38.58%	40.47%	46.16%	46.77%	44.56%	45.17%
Total	100.00%	100.00%	100.00%	100.00%	100.00%	100.00%	100.00%	100.00%	100.00%	100.00%	100.00%	100.00%	100.00%	100.00%	100.00%
All Sources															
District Sources	765,105	700,645	722,247	653,020	778,620	898,292	1,305,512	1,277,540	1,559,470	1,269,163	1,381,209	1,344,721	1,207,963	13,098,402	13,863,507
C.L.A.W.A.	1,942,165	1,791,444	1,420,053	1,363,770	1,388,503	950,936	701,884	647,139	818,102	1,332,701	1,820,321	1,504,277	1,241,309	14,980,439	16,922,604
Total Sources	2,707,270	2,492,089	2,142,300	2,016,790	2,167,123	1,849,228	2,007,396	1,924,679	2,377,572	2,601,864	3,201,530	2,848,998	2,449,272	28,078,841	30,786,111
District Sources	28.26%	28.11%	33.71%	32.38%	35.93%	48.58%	65.04%	66.38%	65.59%	48.78%	43.14%	47.20%	49.32%	46.65%	45.03%
C.L.A.W.A.	71.74%	71.89%	66.29%	67.62%	64.07%	51.42%	34.96%	33.62%	34.41%	51.22%	56.86%	52.80%	50.68%	53.35%	54.97%
Total Sources	100.00%	100.00%	100.00%	100.00%	100.00%	100.00%	100.00%	100.00%	100.00%	100.00%	100.00%	100.00%	100.00%	100.00%	100.00%

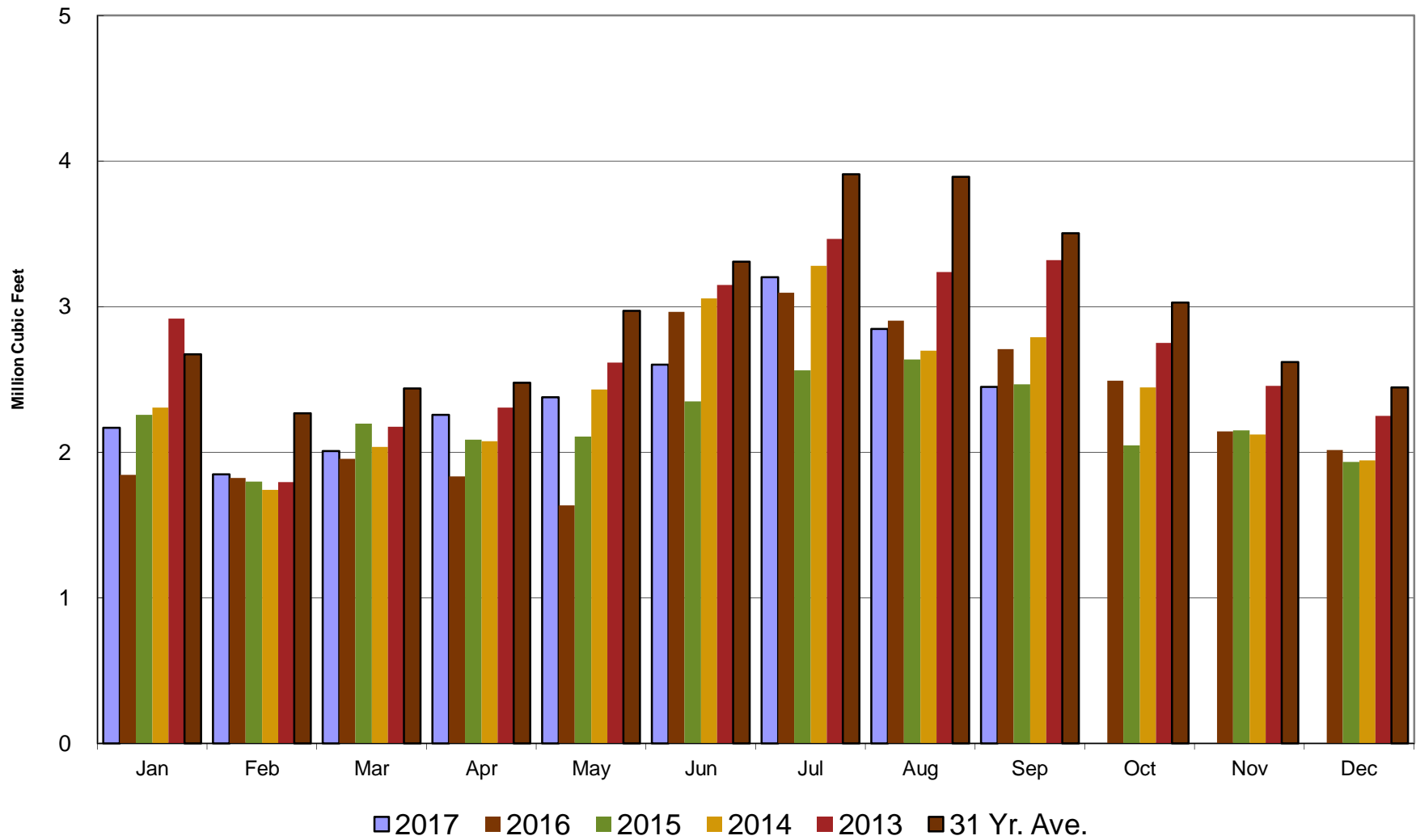
Crestline Village Water District

Water Sources - Last 13 Months



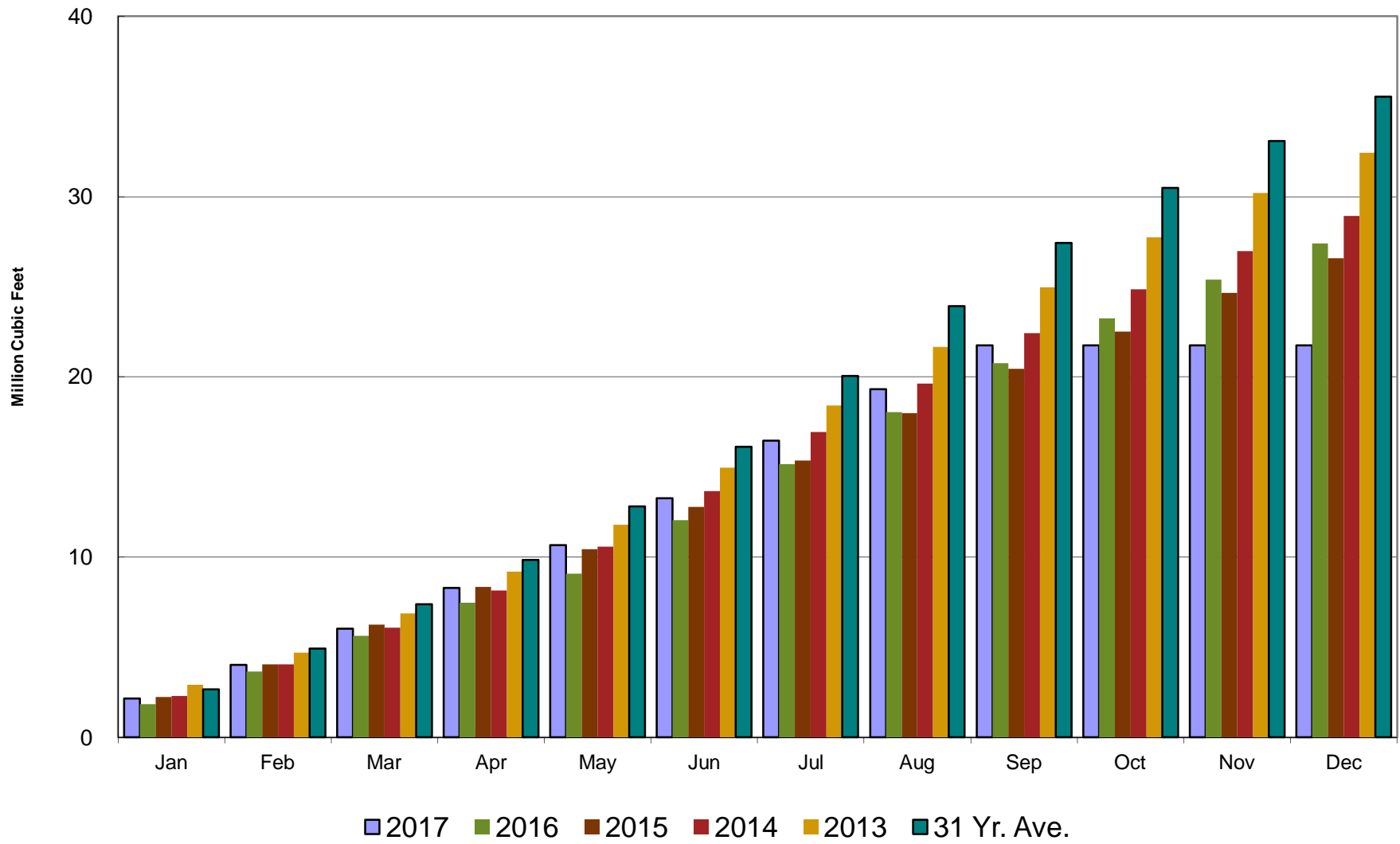
Crestline Village Water District

Total Production by Month



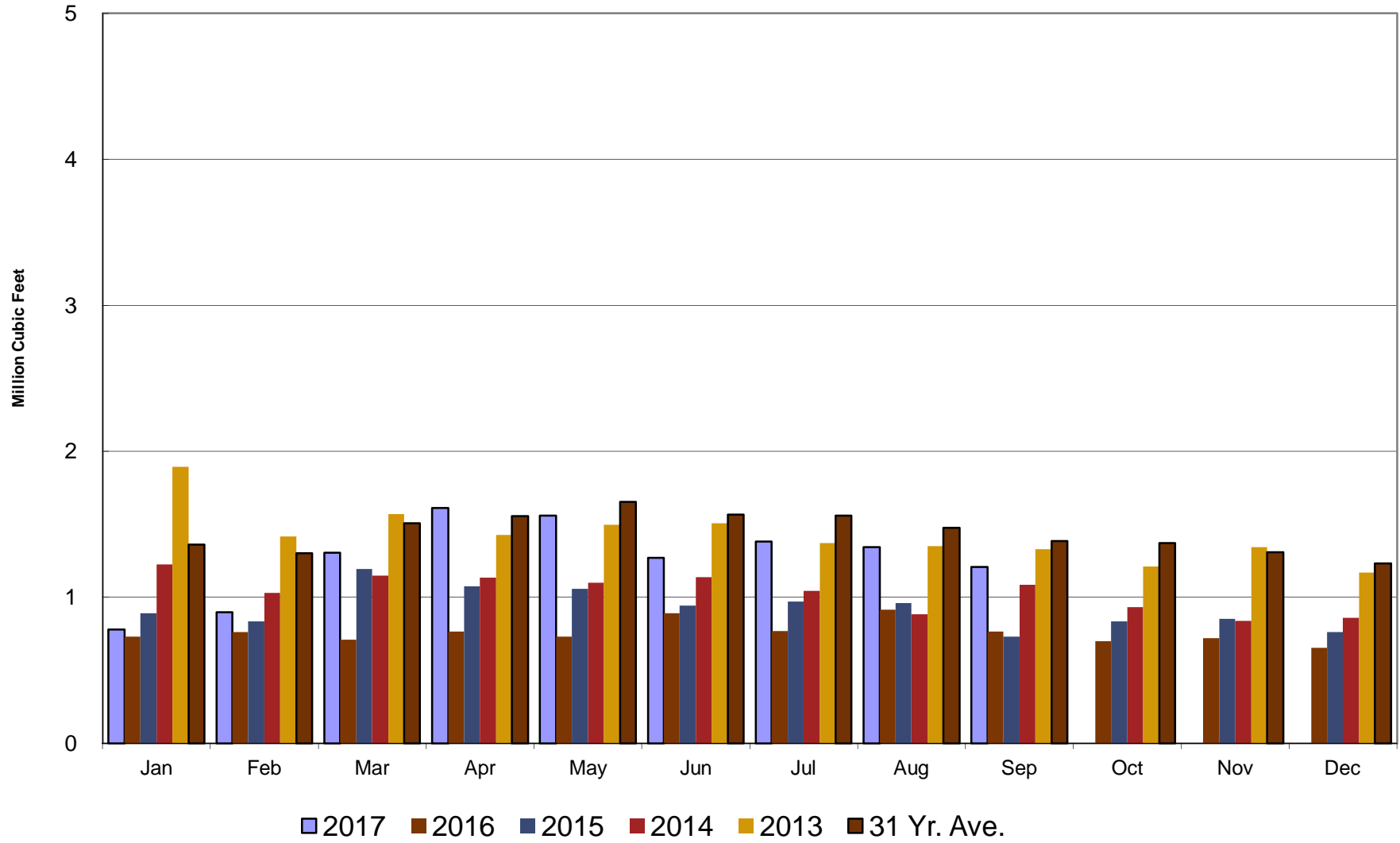
Crestline Village Water District

Total Production Cumulative



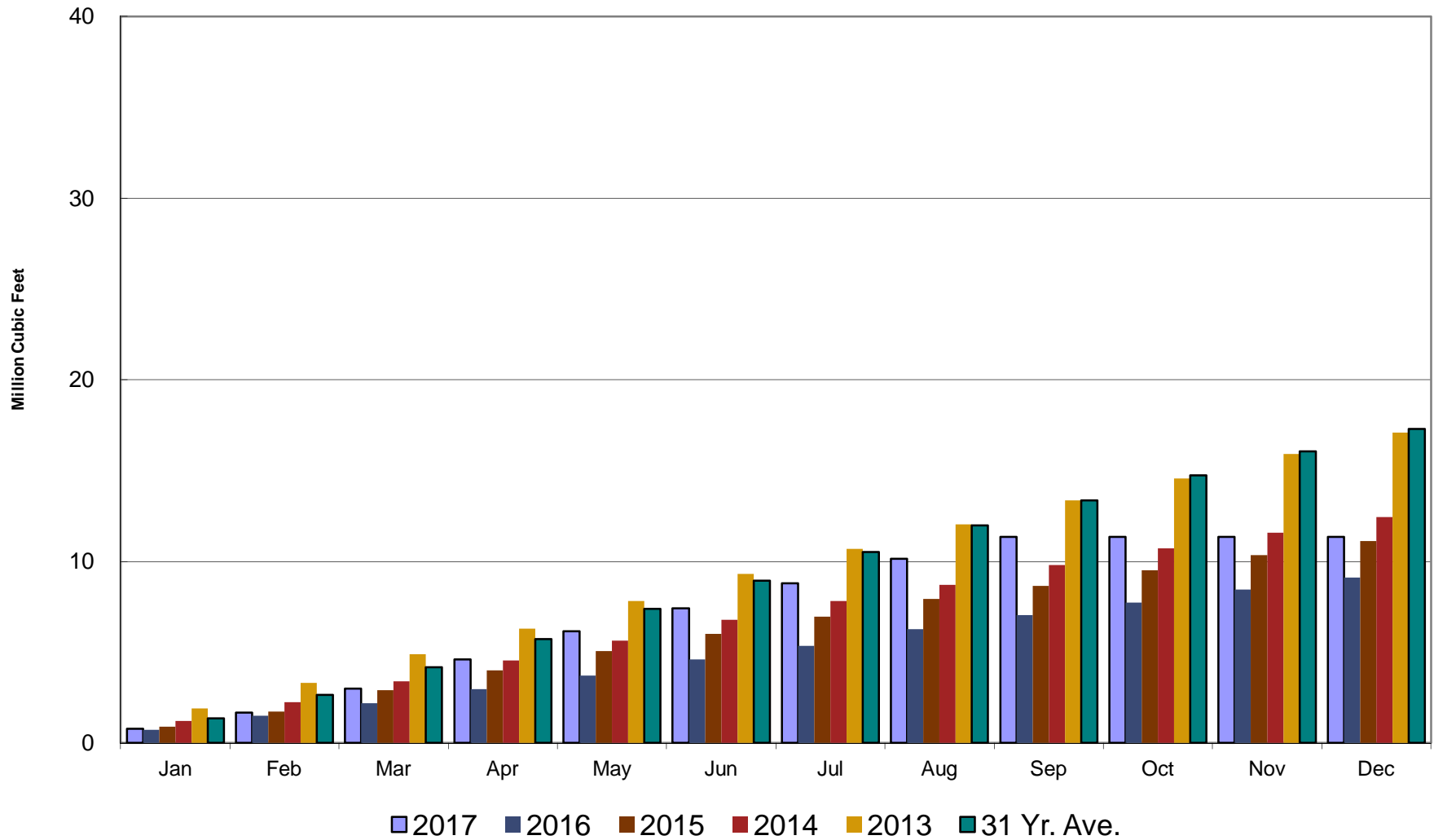
Crestline Village Water District

Well Production by Month



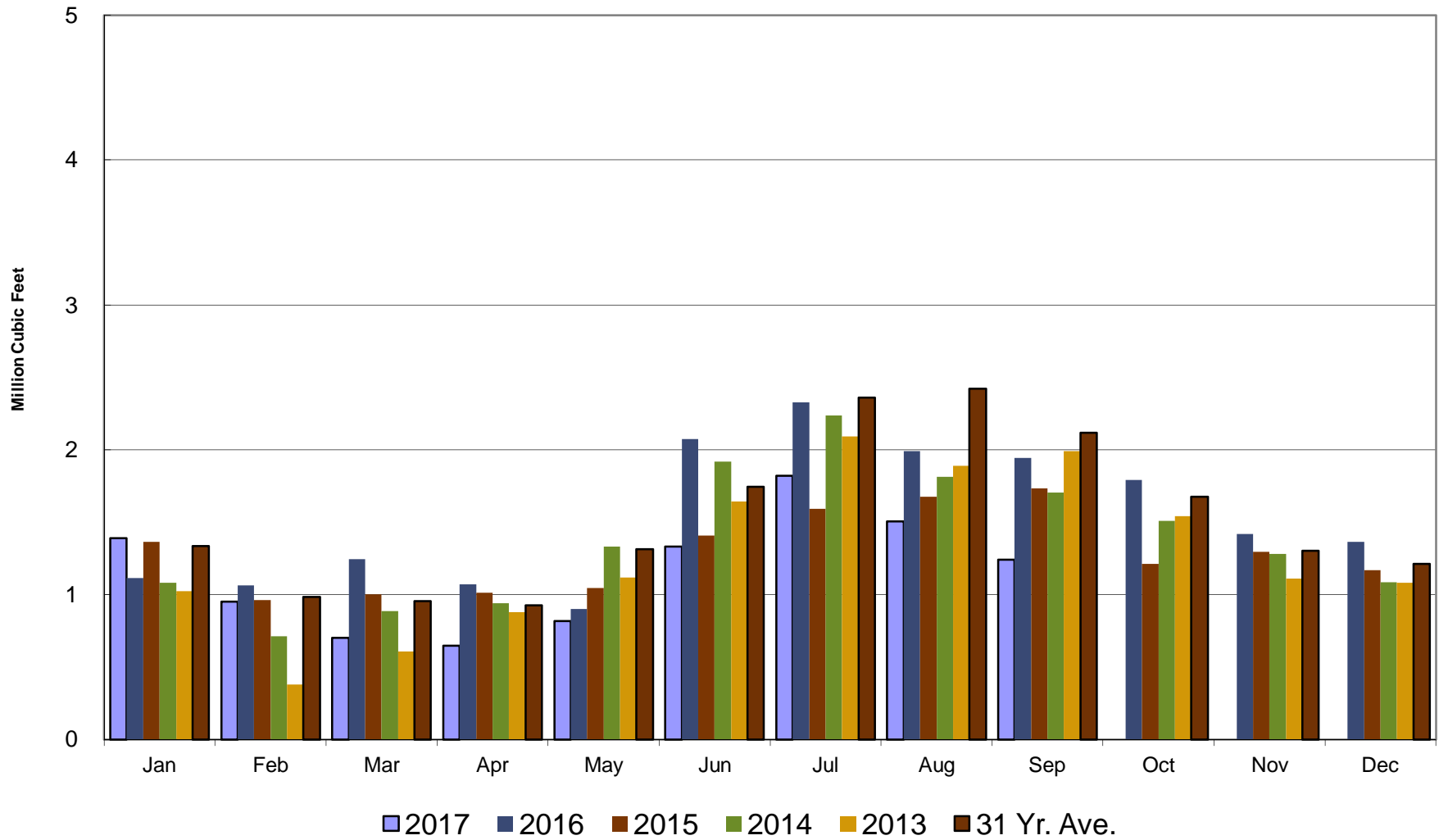
Crestline Village Water District

Well Production Cumulative



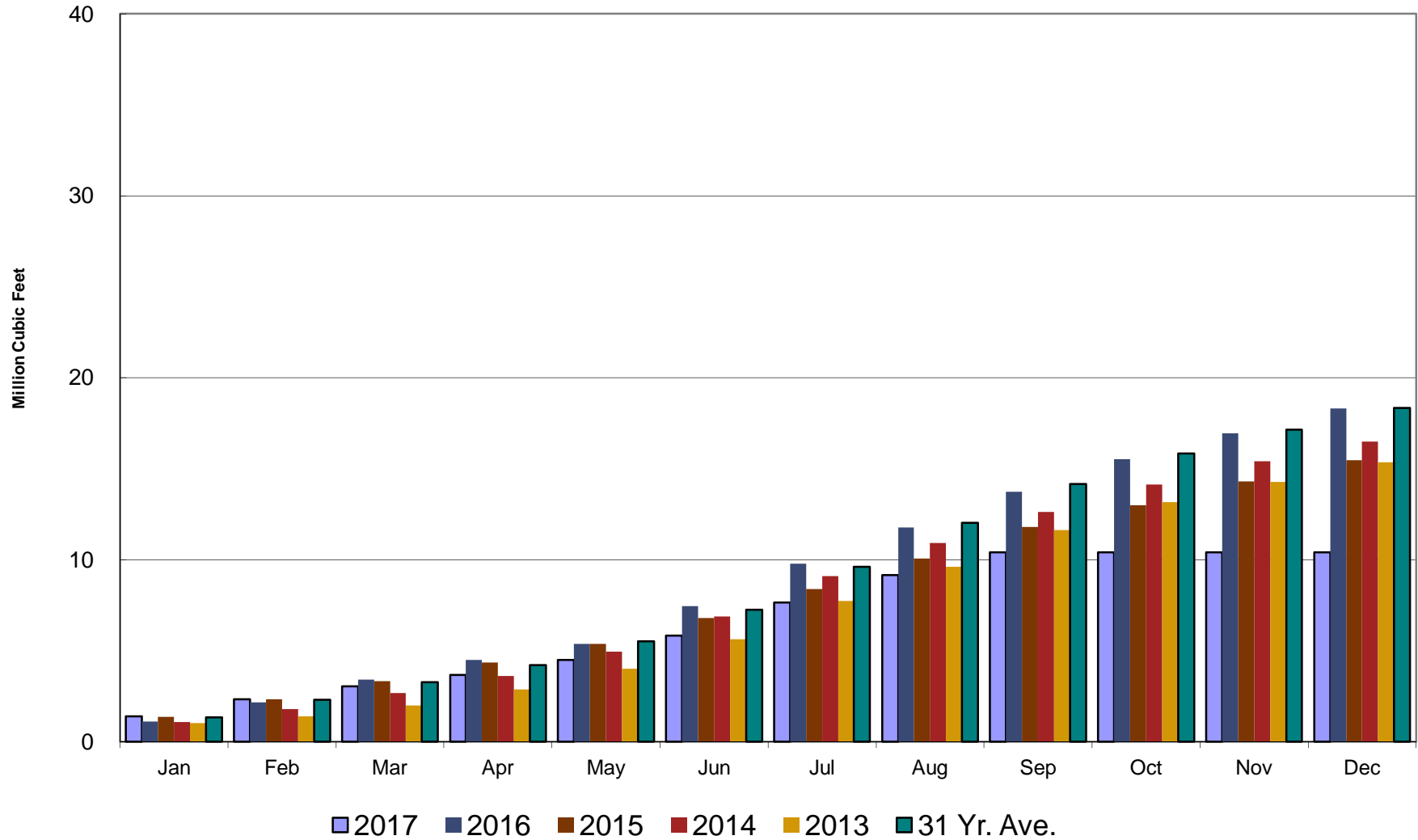
Crestline Village Water District

Purchased Water by Month



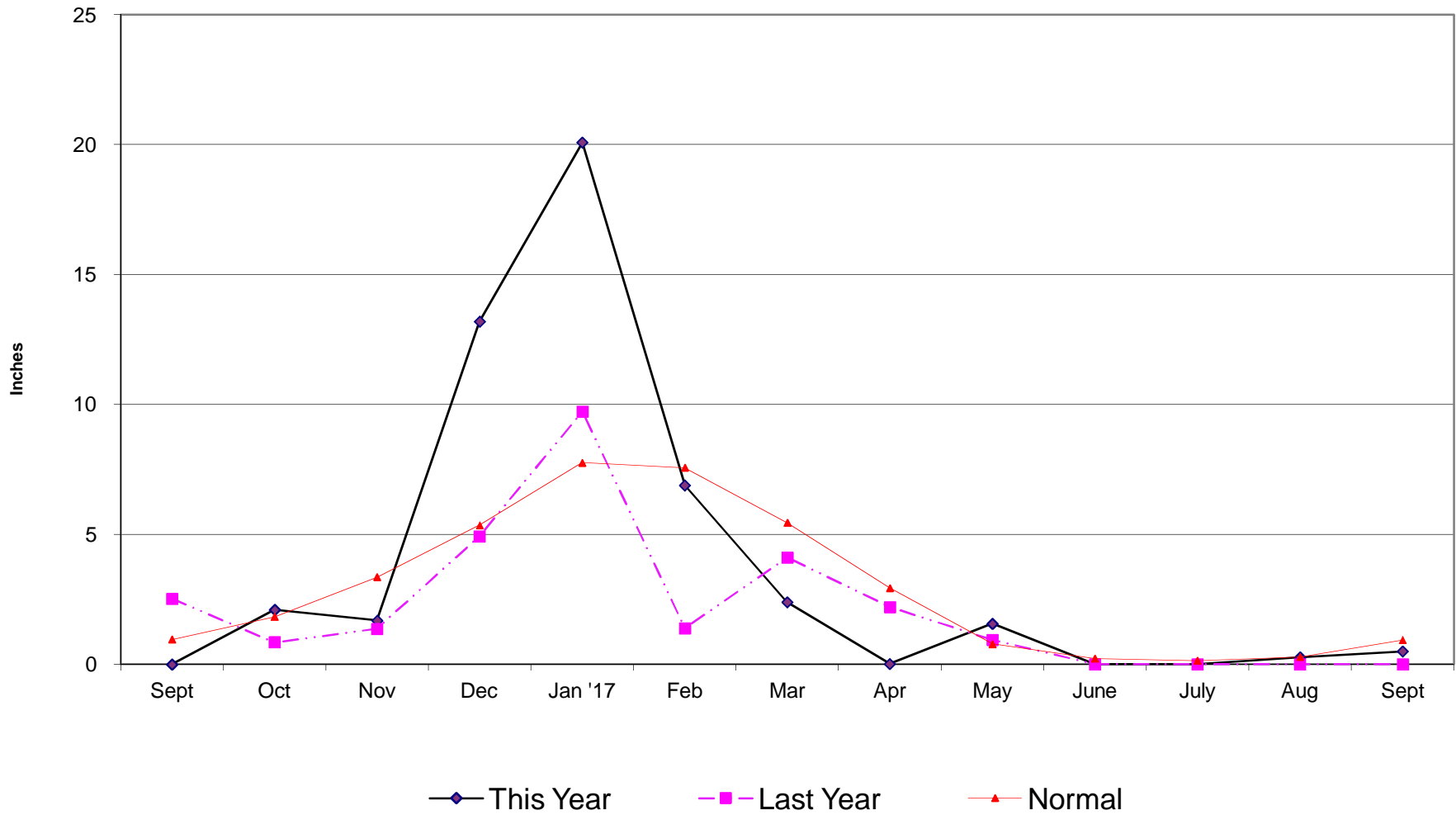
Crestline Village Water District

Purchased Water Cumulative



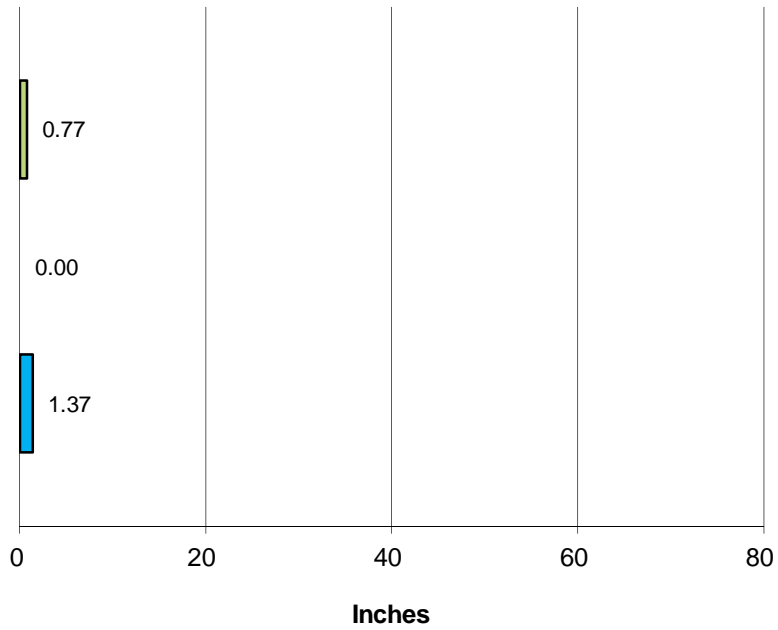
Crestline Village Water District

Rainfall - Last 13 Months



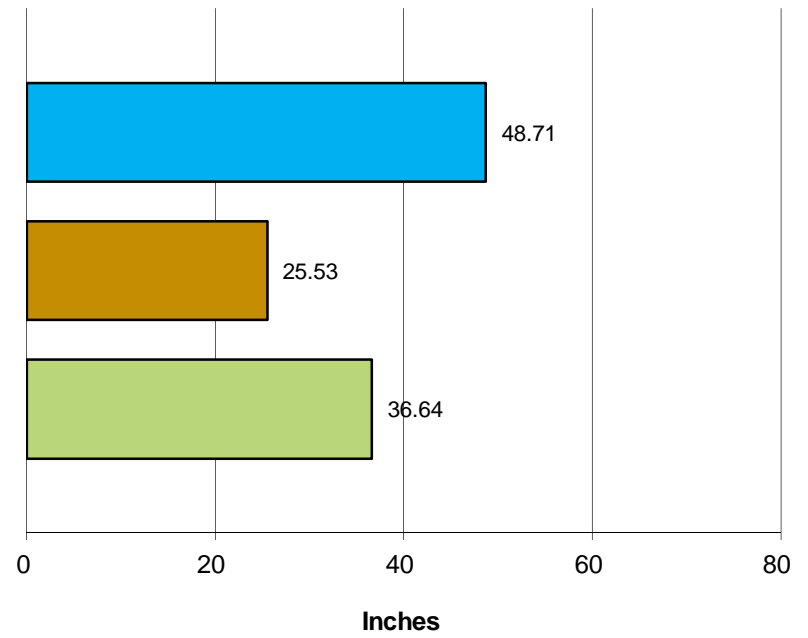
Crestline Village Water District

Total Rainfall July 1, 2017 to Beginning of Current Month



■ This Year ■ Last Year ■ Normal

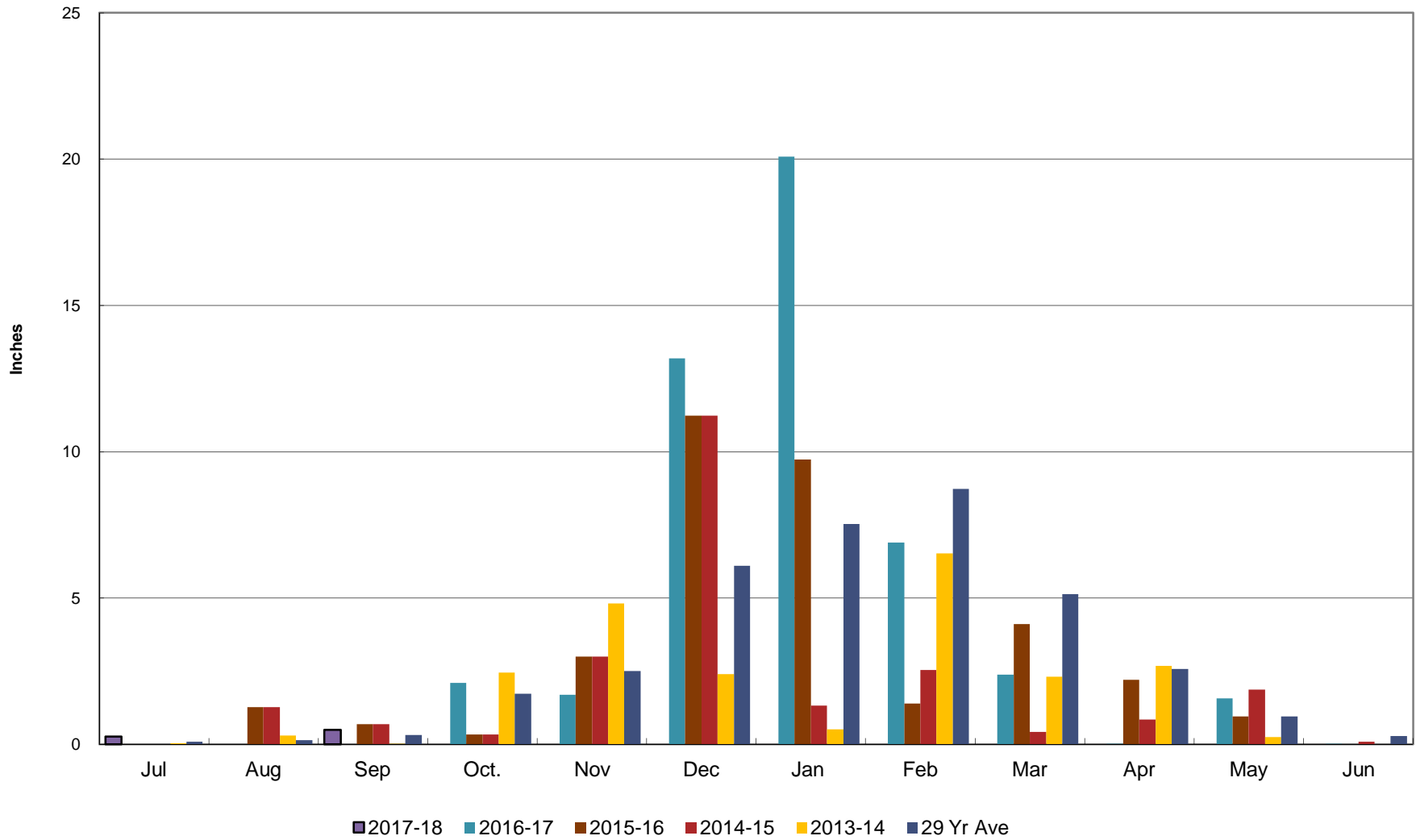
Total Rainfall Last 12 Months



■ This Year ■ Last Year ■ Normal

Crestline Village Water District

Rainfall by Month



Crestline Village Water District

Rainfall Cumulative

