

**Crestline Village Water District  
Source of Supply Production Report  
System Loss - Last 13 Months  
In Cubic Feet**

03/18/19

	Feb	Mar	Apr	May	June	July	August	Sept	Oct	Nov	Dec	Jan '19	Feb	Total
Sources of Supply														
Wells	1,008,282	1,133,325	1,194,244	1,132,872	1,082,733	1,102,438	1,003,332	901,533	1,017,344	647,576	514,242	1,090,018	1,367,259	13,195,198
Purchased Water	849,865	809,024	1,007,165	1,212,072	1,465,534	1,980,696	1,835,348	1,460,575	1,794,720	1,696,003	1,322,968	1,382,554	735,802	17,552,326
Adjustment to Wells *	0	0	0	0	0	0	0	0	0	0	0	0	0	0
<b>Total Water Supplied</b>	<b>1,858,147</b>	<b>1,942,349</b>	<b>2,201,409</b>	<b>2,344,944</b>	<b>2,548,267</b>	<b>3,083,134</b>	<b>2,838,680</b>	<b>2,362,108</b>	<b>2,812,064</b>	<b>2,343,579</b>	<b>1,837,210</b>	<b>2,472,572</b>	<b>2,103,061</b>	<b>30,747,524</b>
Water Used **														
Metered Accounts						Estimated				Estimated				
Crestline Area	854,670	900,619	1,001,987	1,049,570	1,192,462	1,369,493	1,353,623	1,106,742	1,110,762	946,253	811,903	1,062,017	941,370	13,701,471
Lake Gregory Area	924,561	945,137	986,484	1,076,778	1,147,446	1,472,642	1,487,797	1,338,394	1,371,614	1,150,726	922,514	1,233,622	960,810	15,018,525
Change in Storage	(17,478)	10,922	(22,949)	19,010	(21,598)	23,937	34,745	(19,875)	(26,874)	21,586	(5,521)	(1,686)	(25,298)	(31,079)
Flushing, System & Other	14,439	14,439	32,203	15,107	18,209	18,209	14,773	14,633	26,097	28,303	14,439	14,439	14,439	239,730
<b>Accounted for Water</b>	<b>1,776,192</b>	<b>1,871,117</b>	<b>1,997,725</b>	<b>2,160,465</b>	<b>2,336,519</b>	<b>2,884,281</b>	<b>2,890,938</b>	<b>2,439,894</b>	<b>2,481,599</b>	<b>2,146,868</b>	<b>1,743,335</b>	<b>2,308,392</b>	<b>1,891,321</b>	<b>28,928,647</b>
<b>System Loss (CF)</b>	81,955	71,232	203,684	184,479	211,748	198,853	(52,258)	(77,786)	330,465	196,711	93,875	164,180	211,740	1,818,877
<b>System Loss (%)</b>	4.4%	3.7%	9.3%	7.9%	8.3%	6.4%	-1.8%	-3.3%	11.8%	8.4%	5.1%	6.6%	10.1%	5.9%
<b>System Loss (GPM)</b>	15.2	12.3	34.1	30.9	37.9	32.3	(8.8)	(14.4)	52.0	34.1	18.8	24.4	37.9	26.0

<b>Month to Month Averaging ***</b>														
<b>System Loss (CF)</b>	40,978	76,594	137,458	194,081	198,113	205,300	73,297	(65,022)	126,339	263,588	145,293	129,028	187,960	1,713,007
<b>System Loss (%)</b>	2.2%	4.0%	6.5%	8.6%	8.1%	7.4%	2.3%	-2.6%	4.2%	10.1%	6.8%	5.9%	8.4%	5.6%
<b>System Loss (GPM)</b>	7.6	13.8	23.2	32.5	34.4	35.1	11.8	(11.6)	18.8	43.0	26.4	21.6	31.1	24.5

Estimated Uses														
Known leaks - Est. loss	0	144	1,444	9,816	1,663	5,005	72,898	906	37,796	139	2,160	193	1,204	133,369
<b>Total Estimated Uses</b>	<b>0</b>	<b>144</b>	<b>1,444</b>	<b>9,816</b>	<b>1,663</b>	<b>5,005</b>	<b>72,898</b>	<b>906</b>	<b>37,796</b>	<b>139</b>	<b>2,160</b>	<b>193</b>	<b>1,204</b>	<b>133,369</b>
<b>Unaccounted for Water (CF)</b>	81,955	71,088	202,240	174,662	210,085	193,848	(125,156)	(78,692)	292,669	196,572	91,715	163,987	210,536	1,685,508
<b>Unaccounted For (%)</b>	4.4%	3.7%	9.2%	7.5%	8.2%	6.3%	-4.4%	-3.3%	10.4%	8.4%	5.0%	6.6%	10.0%	5.5%
<b>Unaccounted For (GPM)</b>	15.2	12.3	33.9	29.3	37.6	31.5	(21.0)	(14.6)	46.1	34.0	18.3	24.3	37.7	24.1
Number of Days in Period	28	30	31	31	29	32	31	28	33	30	26	35	29	363

**NOTES:**

Estimated - Includes estimated billing period. This month includes estimated consumption. The following billing period will reflect adjustments to actual water used.

\* - Currently there are no Adjustments to Wells being made.

\*\* - Water Used - Metered Accounts is adjusted to the time period in Total Water Supplied

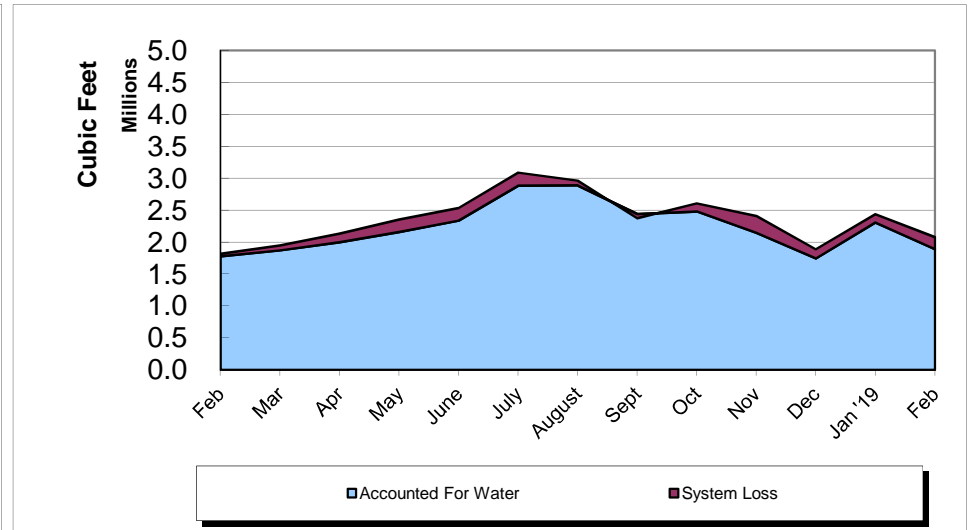
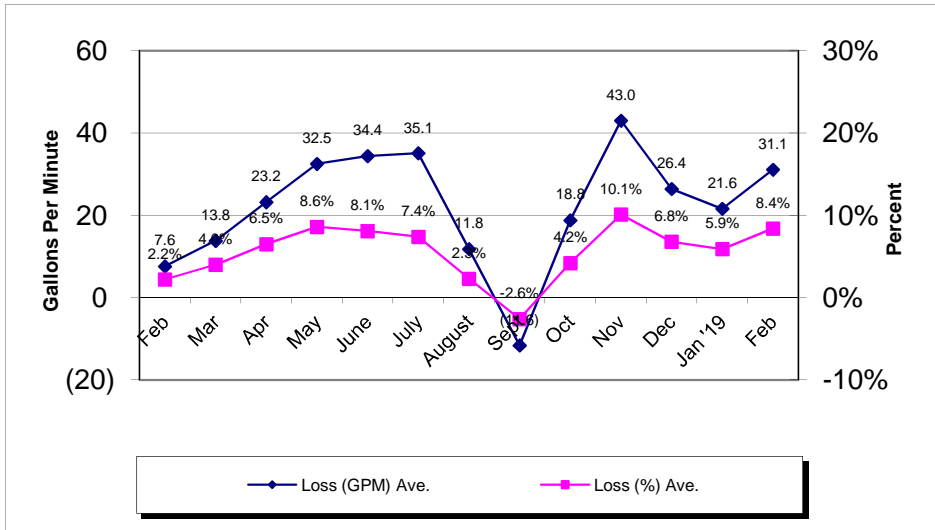
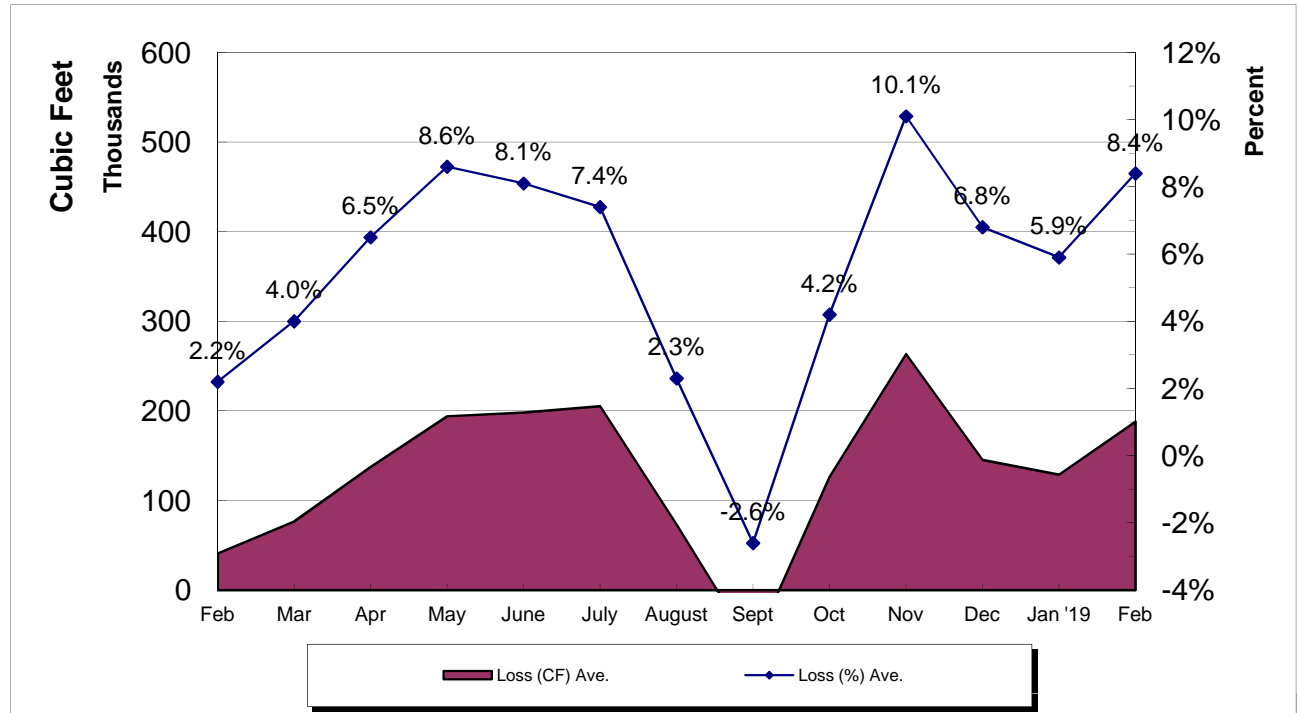
\*\*\* - Month to Month averaging averages the System Loss for each period with the immediately prior period for trending purposes.

System Loss Costs	This Month	Average
Cost of System Loss:	\$4,962	\$3,479
Cost of 5% System Loss:	2,776	3,122
<b>Amount above (below) 5% System Loss</b>	<b>\$2,186</b>	<b>\$357</b>
Note: Cost is calculated at highest cost (CLAWA Rate: \$2.64/100 c.f.)		

# Crestline Village Water District

## System Loss Last 13 Months

With Month to Month Averaging



**Crestline Village Water District**  
**System Report on: 12/26/18**

**For Month of: December 2018**

Water Storage (Gal)	Capacity	Gallons/ Foot	Level (FT)	Current Storage	% of Capacity
Beacon I & II	385,354	16,752	20.68	346,431	89.90%
Saxon	337,674	14,681	18.19	267,047	79.08%
Pinecrest I & II	2,063,492	54,302	31.43	1,706,712	82.71%
Zurich	380,500	18,789	18.95	356,052	93.57%
Lakeview	1,230,212	27,955	37.36	1,044,399	84.90%
Old Mill	705,900	27,151	23.58	640,221	90.70%
Barn	444,443	19,752	18.21	359,684	80.93%
Wilson	983,681	33,915	23.08	782,758	79.57%
Chillon	337,674	14,679	16.14	236,919	70.16%
Brookside	748,067	28,772	19.51	561,342	75.04%
Chamois	1,026,532	39,482	21.20	837,018	81.54%
<b>Total</b>	<b>8,643,529</b>		<b>248.33</b>	<b>7,138,583</b>	<b>82.59%</b>

WELLS	Production M-T-D (Cubic Feet)	Status
Altdorf	47,759	On
Pioneer-2	29,535	On
Pioneer-1	26,207	On
Old Mill Springs	14,640	On
Maple Springs	8,878	On
Willow Springs	7,290	On
Brookside Springs	6,960	On
Hillside Springs	3,600	On
Pinecrest 1 & 2	23,660	On
Pinecrest Vertical	0	Off
Cypress Vertical	0	Off
Anderson Vertical	37,476	Cycled
Wilson Springs 1 & 2	60,379	On
Wilson Vertical	105,890	On
Felsen Vertical	0	Off
Horst	32,102	On
Jewel 64	51,645	On
Cathcart	14,716	On
Bergschrund	4,385	On
Chamois	0	Off
Chamois Vertical	39,120	On
	0	0
	0	0
	0	0
Lewter	0	Off
<b>Total</b>	<b>514,242</b>	

C.L.A.W.A.	FLOWS - GPM				Production M-T-D (Cubic Feet)
	Timed	Requested	Variance	% Variance	
CF - Crestline	64	60	4	6.67%	299,599
Mile High 2"	40	40	0	0.00%	204,786
Mile High 4"	0	0	0	0.00%	0
Pinecrest 2"	0	0	0	0.00%	0
Pinecrest 4"	156	160	(4)	-2.50%	818,583
Lake Drive 2"	0	0	0	0.00%	0
Lake Drive 4"	0	0	0	0.00%	0
Camp Seely	0	0	0	0.00%	0
<b>Total</b>	<b>260</b>	<b>260</b>	<b>0</b>	<b>0.00%</b>	<b>1,322,968</b>

December Purchases	GPM	Cubic Feet	Wells	GPM	Cubic Feet
Last Year M-T-D:	196.2	982,049		127.7	639,183
Actual M-T-D:	264.3	1,322,968		102.7	514,242
Over/(Under) Last Year:	68.1	340,919.0		(25.0)	(124,941.0)

Total	GPM	Cubic Feet
Last Year M-T-D:	323.9	1,621,232
Actual M-T-D:	367.1	1,837,210
Over/(Under) Last Year:	43.2	215,978.0

**Crestline Village Water District**  
**System Report on: 01/30/19**

**For Month of: January 2019**

Water Storage (Gal)	Capacity	Gallons/ Foot	Level (FT)	Current Storage	% of Capacity
Beacon I & II	385,354	16,752	19.46	325,994	84.60%
Saxon	337,674	14,681	18.29	268,515	79.52%
Pinecrest I & II	2,063,492	54,302	31.14	1,690,964	81.95%
Zurich	380,500	18,789	22.03	413,922	108.78%
Lakeview	1,230,212	27,955	38.54	1,077,386	87.58%
Old Mill	705,900	27,151	23.70	643,479	91.16%
Barn	444,443	19,752	17.66	348,820	78.48%
Wilson	983,681	33,915	22.03	747,147	75.95%
Chillon	337,674	14,679	16.56	243,084	71.99%
Brookside	748,067	28,772	19.55	562,493	75.19%
Chamois	1,026,532	39,482	21.24	838,598	81.69%
<b>Total</b>	<b>8,643,529</b>		<b>250.20</b>	<b>7,160,402</b>	<b>82.84%</b>

WELLS	Production M-T-D (Cubic Feet)	Status
Altdorf	126,854	On
Pioneer-2	69,148	On
Pioneer-1	83,753	On
Old Mill Springs	41,440	On
Maple Springs	16,633	On
Willow Springs	20,510	On
Brookside Springs	23,930	On
Hillside Springs	8,310	On
Pinecrest 1 & 2	59,270	On
Pinecrest Vertical	0	Off
Cypress Vertical	36,630	Off
Anderson Vertical	93,129	Cycled
Wilson Springs 1 & 2	142,223	On
Wilson Vertical	32,394	On
Felsen Vertical	0	Off
Horst	74,894	On
Jewel 64	124,560	On
Cathcart	36,042	On
Bergschrund	10,838	On
Chamois	0	Off
Chamois Vertical	89,460	On
	0	0
	0	0
	0	0
Lewter	0	Off
<b>Total</b>	<b>1,090,018</b>	

C.L.A.W.A.	FLOWS - GPM				Production M-T-D (Cubic Feet)
	Timed	Requested	Variance	% Variance	
CF - Crestline	66	50	16	32.00%	409,759
Mile High 2"	40	40	0	0.00%	273,463
Mile High 4"	0	0	0	0.00%	0
Pinecrest 2"	0	0	0	0.00%	0
Pinecrest 4"	117	120	(3)	-2.50%	699,332
Lake Drive 2"	0	0	0	0.00%	0
Lake Drive 4"	0	0	0	0.00%	0
Camp Seely	0	0	0	0.00%	0
<b>Total</b>	<b>223</b>	<b>210</b>	<b>13</b>	<b>6.19%</b>	<b>1,382,554</b>

January Purchases	GPM	Cubic Feet	Wells	GPM	Cubic Feet
Last Year M-T-D:	228.8	1,321,412		149.4	862,845
Actual M-T-D:	239.4	1,382,554		188.7	1,090,018
Over/(Under) Last Year:	10.6	61,142.0		39.3	227,173.0

Total	GPM	Cubic Feet
Last Year M-T-D:	378.2	2,184,257
Actual M-T-D:	428.1	2,472,572
Over/(Under) Last Year:	49.9	288,315.0

**Crestline Village Water District**  
**System Report on: 02/28/19**

**For Month of: February 2019**

Water Storage (Gal)	Capacity	Gallons/ Foot	Level (FT)	Current Storage	% of Capacity
Beacon I & II	385,354	16,752	19.16	320,968	83.29%
Saxon	337,674	14,681	18.25	267,928	79.35%
Pinecrest I & II	2,063,492	54,302	30.97	1,681,733	81.50%
Zurich	380,500	18,789	18.20	341,960	89.87%
Lakeview	1,230,212	27,955	31.33	875,830	71.19%
Old Mill	705,900	27,151	23.85	647,551	91.73%
Barn	444,443	19,752	17.80	351,586	79.11%
Wilson	983,681	33,915	24.74	839,057	85.30%
Chillon	337,674	14,679	16.65	244,405	72.38%
Brookside	748,067	28,772	18.03	518,759	69.35%
Chamois	1,026,532	39,482	21.24	838,598	81.69%
<b>Total</b>	<b>8,643,529</b>		<b>240.22</b>	<b>6,928,375</b>	<b>80.16%</b>

WELLS	Production M-T-D (Cubic Feet)	Status
Altdorf	74,147	On
Pioneer-2	36,529	On
Pioneer-1	43,705	On
Old Mill Springs	157,130	On
Maple Springs	60,981	On
Willow Springs	72,610	On
Brookside Springs	68,590	On
Hillside Springs	22,470	On
Pinecrest 1 & 2	73,100	On
Pinecrest Vertical	0	Off
Cypress Vertical	80,750	Off
Anderson Vertical	93,506	Cycled
Wilson Springs 1 & 2	95,329	On
Wilson Vertical	119,562	On
Felsen Vertical	143,972	Off
Horst	44,247	On
Jewel 64	76,085	On
Cathcart	29,173	On
Bergschrund	29,053	On
Chamois	0	Off
Chamois Vertical	46,320	On
	0	0
	0	0
	0	0
Lewter	0	Off
<b>Total</b>	<b>1,367,259</b>	

C.L.A.W.A.	FLOWS - GPM				Production M-T-D (Cubic Feet)
	Timed	Requested	Variance	% Variance	
CF - Crestline	0	0	0	0.00%	113,235
Mile High 2"	0	0	0	0.00%	49,973
Mile High 4"	0	0	0	0.00%	0
Pinecrest 2"	0	0	0	0.00%	0
Pinecrest 4"	94	90	4	4.44%	572,594
Lake Drive 2"	0	0	0	0.00%	0
Lake Drive 4"	0	0	0	0.00%	0
Camp Seely	0	0	0	0.00%	0
<b>Total</b>	<b>94</b>	<b>90</b>	<b>4</b>	<b>4.44%</b>	<b>735,802</b>

February Purchases	GPM	Cubic Feet	Wells	GPM	Cubic Feet
Last Year M-T-D:	185.5	1,035,626		160.6	896,611
Actual M-T-D:	131.8	735,802		244.9	1,367,259
Over/(Under) Last Year:	(53.7)	(299,824.0)		84.3	470,648.0

Total	GPM	Cubic Feet
Last Year M-T-D:	346.1	1,932,237
Actual M-T-D:	376.7	2,103,061
Over/(Under) Last Year:	30.6	170,824.0

**Crestline Village Water District**  
**Source of Supply Production Report**  
**Cubic Feet**  
**Last 13 Months**

03/18/19

<b>Source Name</b>	<b>February '18</b>	<b>March</b>	<b>April</b>	<b>May</b>	<b>June</b>	<b>July</b>	<b>August</b>	<b>September</b>	<b>October</b>	<b>November</b>	<b>December</b>	<b>January '19</b>	<b>February</b>	<b>Last 12 Months</b>	<b>13 Months</b>
<b>Division 10</b>															
Altdorf	55,498	68,202	68,033	62,748	56,103	59,905	56,355	50,276	57,499	52,454	47,759	126,854	74,147	780,335	835,833
Pioneer #2	35,025	37,677	39,043	38,394	35,216	38,293	36,384	32,431	34,522	34,254	29,535	69,148	36,529	461,426	496,451
Pioneer #1	27,165	48,211	37,852	32,185	28,531	30,571	28,627	24,984	28,677	26,174	26,207	83,753	43,705	439,477	466,642
Old Mill Springs	21,360	31,900	37,780	29,960	26,210	22,520	21,740	18,150	19,720	17,030	14,640	41,440	157,130	438,220	459,580
Maple Springs	11,656	19,982	11,737	11,490	9,699	9,815	8,670	10,086	12,083	7,992	8,878	16,633	60,981	188,046	199,702
Willow Springs	18,170	13,270	22,210	20,340	18,110	17,040	13,730	10,980	10,640	9,350	7,290	20,510	72,610	236,080	254,250
Brookside Springs	11,630	18,300	23,820	17,180	12,250	11,250	9,610	7,490	8,950	7,710	6,960	23,930	68,590	216,040	227,670
Hillside Springs	6,800	6,930	7,170	7,140	6,340	6,890	5,720	5,110	5,170	4,440	3,600	8,310	22,470	89,290	96,900
Pinecrest	43,190	46,380	54,780	52,570	45,720	46,250	40,590	33,510	36,060	29,420	23,660	59,270	73,100	541,310	584,500
Pinecrest Vertical	98,370	100,240	75,390	127,360	97,200	103,660	93,680	80,890	91,620	32,520	0	0	0	802,560	900,930
Cypress Vertical	83,530	89,410	92,830	91,300	89,840	93,860	89,960	81,550	93,080	6,610	0	36,630	80,750	845,820	929,350
Anderson Vertical	62,888	89,363	108,986	67,121	107,064	76,033	52,055	56,053	56,114	40,626	37,476	93,129	93,506	877,526	940,414
Division 10 Totals	475,282	569,865	579,631	557,788	532,283	516,087	457,121	411,510	454,135	268,580	206,005	579,607	783,518	5,916,130	6,391,412
<b>Division 20</b>															
Wilson Springs #1 & 2	85,552	90,711	89,411	86,585	80,567	85,636	79,950	70,662	79,147	72,247	60,379	142,223	95,329	1,032,847	1,118,399
Wilson Vertical	124,925	131,552	135,195	129,400	124,340	133,575	127,359	111,578	134,176	119,521	105,890	32,394	119,562	1,404,542	1,529,467
Felsen Vertical	140,783	149,595	157,093	152,058	144,165	162,280	152,264	138,994	159,450	19,987	0	0	143,972	1,379,858	1,520,641
Horst	56,464	53,506	54,590	52,892	47,444	50,289	45,290	39,333	44,707	38,440	32,102	74,894	44,247	577,734	634,198
Jewell No. 64	61,751	67,106	68,034	67,920	61,360	70,394	62,464	59,385	66,035	59,146	51,645	124,560	76,085	834,134	895,885
Cathcart	24,171	26,060	27,203	23,636	20,563	21,377	20,025	17,865	20,012	17,587	14,716	36,042	29,173	274,259	298,430
Bergschrund	13,244	11,020	11,667	11,313	21,765	9,560	8,729	7,186	7,452	5,838	4,385	10,838	29,053	138,806	152,050
Chamois	0	0	0	0	0	0	0	0	0	0	0	0	0	0	0
Chamois Vertical	26,110	33,910	71,420	51,280	50,246	53,240	50,130	45,020	52,230	46,230	39,120	89,460	46,320	628,606	654,716
Valle	0	0	0	0	0	0	0	0	0	0	0	0	0	0	0
Chillon 64 (stand-by)	0	0	0	0	0	0	0	0	0	0	0	0	0	0	0
Government	0	0	0	0	0	0	0	0	0	0	0	0	0	0	0
Lewter	0	0	0	0	0	0	0	0	0	0	0	0	0	0	0
Division 20 Totals	533,000	563,460	614,613	575,084	550,450	586,351	546,211	490,023	563,209	378,996	308,237	510,411	583,741	6,270,786	6,803,786
<b>Total District Sources</b>	<b>1,008,282</b>	<b>1,133,325</b>	<b>1,194,244</b>	<b>1,132,872</b>	<b>1,082,733</b>	<b>1,102,438</b>	<b>1,003,332</b>	<b>901,533</b>	<b>1,017,344</b>	<b>647,576</b>	<b>514,242</b>	<b>1,090,018</b>	<b>1,367,259</b>	<b>12,186,916</b>	<b>13,195,198</b>
<b>C.L.A.W.A.</b>															
Crest Forest 6"	248,930	270,187	290,775	320,722	321,524	419,519	426,203	276,471	465,508	347,861	299,599	409,759	409,759	4,257,887	4,506,817
Mile High Park 2"	208,422	203,142	173,182	193,235	130,374	345,535	317,701	186,511	304,211	239,853	204,786	273,463	273,463	2,845,456	3,053,878
Mile High Park 4"	0	0	0	0	0	0	0	0	0	0	0	0	0	0	0
Pinecrest 2"	0	0	172,660	425,695	0	0	0	0	0	0	0	0	0	598,355	598,355
Pinecrest 4"	371,791	316,444	334,759	144,920	895,722	1,160,829	972,594	839,171	853,610	1,108,289	818,583	699,332	699,332	8,843,585	9,215,376
Lake Drive 2"	0	0	7,313	127,500	0	0	0	0	0	0	0	0	0	134,813	134,813
Lake Drive 4"	0	0	0	0	0	0	0	158,422	60,428	0	0	0	0	218,850	218,850
Camp Seely	20,722	19,251	28,476	0	117,914	54,813	118,850	0	110,963	0	0	0	0	450,267	470,989
<b>C.L.A.W.A. Totals</b>	<b>849,865</b>	<b>809,024</b>	<b>1,007,165</b>	<b>1,212,072</b>	<b>1,465,534</b>	<b>1,980,696</b>	<b>1,835,348</b>	<b>1,460,575</b>	<b>1,794,720</b>	<b>1,696,003</b>	<b>1,322,968</b>	<b>1,382,554</b>	<b>1,382,554</b>	<b>17,349,213</b>	<b>18,199,078</b>
<b>Grand Totals</b>	<b>1,858,147</b>	<b>1,942,349</b>	<b>2,201,409</b>	<b>2,344,944</b>	<b>2,548,267</b>	<b>3,083,134</b>	<b>2,838,680</b>	<b>2,362,108</b>	<b>2,812,064</b>	<b>2,343,579</b>	<b>1,837,210</b>	<b>2,472,572</b>	<b>2,749,813</b>	<b>29,536,129</b>	<b>31,394,276</b>

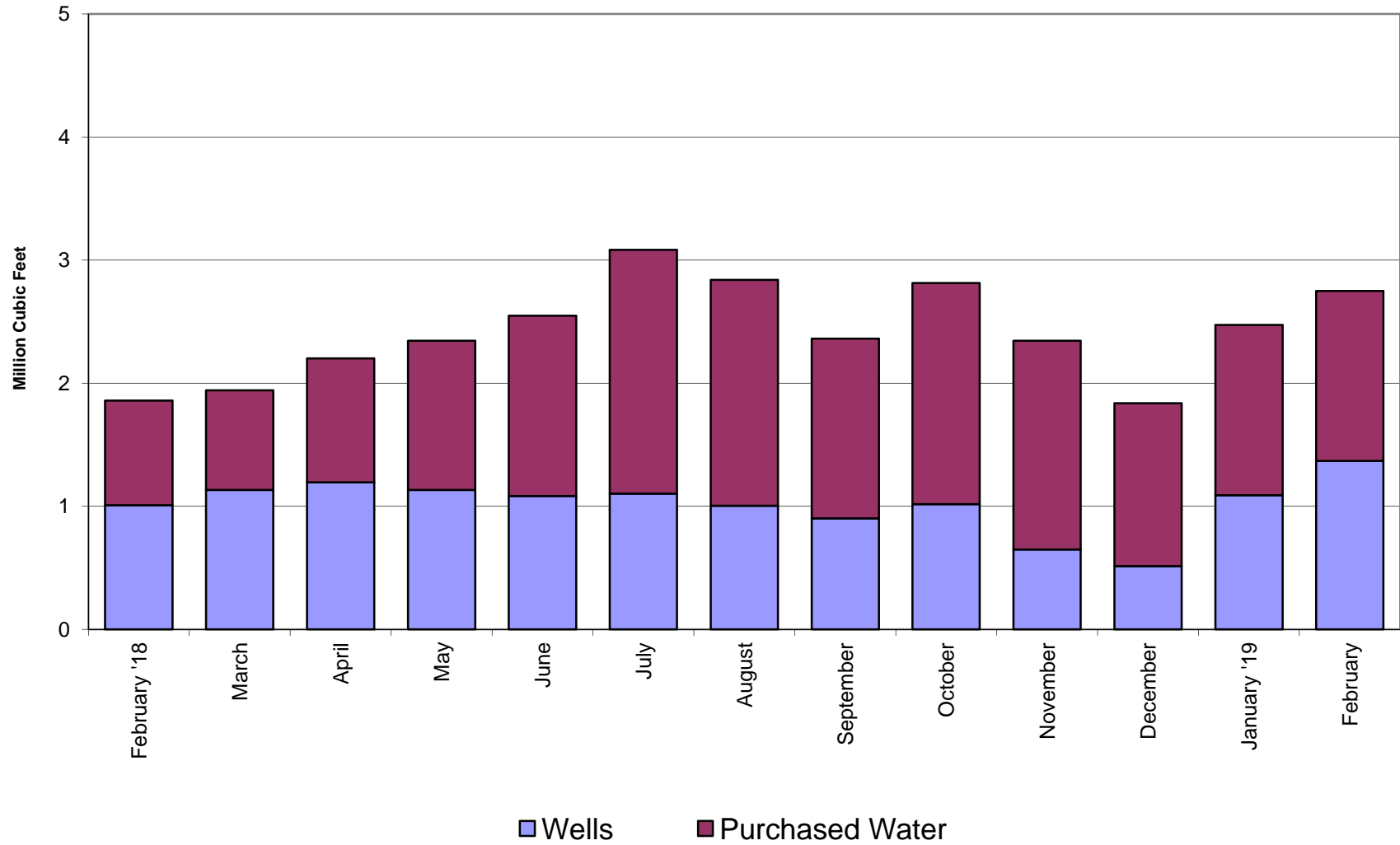
**Crestline Village Water District  
Source of Supply Production Report  
Cubic Feet  
Last 13 Months**

03/18/19

<u>Source Name</u>	<u>February '18</u>	<u>March</u>	<u>April</u>	<u>May</u>	<u>June</u>	<u>July</u>	<u>August</u>	<u>September</u>	<u>October</u>	<u>November</u>	<u>December</u>	<u>January '19</u>	<u>February</u>	<u>Last 12 Months</u>	<u>13 Months</u>
<b>District Sources</b>															
Division 10	475,282	569,865	579,631	557,788	532,283	516,087	457,121	411,510	454,135	268,580	206,005	579,607	783,518	5,916,130	6,391,412
Division 20	533,000	563,460	614,613	575,084	550,450	586,351	546,211	490,023	563,209	378,996	308,237	510,411	583,741	6,270,786	6,803,786
<b>Total</b>	<b>1,008,282</b>	<b>1,133,325</b>	<b>1,194,244</b>	<b>1,132,872</b>	<b>1,082,733</b>	<b>1,102,438</b>	<b>1,003,332</b>	<b>901,533</b>	<b>1,017,344</b>	<b>647,576</b>	<b>514,242</b>	<b>1,090,018</b>	<b>1,367,259</b>	<b>12,186,916</b>	<b>13,195,198</b>
Division 10	47.14%	50.28%	48.54%	49.24%	49.16%	46.81%	45.56%	45.65%	44.64%	41.47%	40.06%	53.17%	57.31%	48.54%	48.44%
Division 20	52.86%	49.72%	51.46%	50.76%	50.84%	53.19%	54.44%	54.35%	55.36%	58.53%	59.94%	46.83%	42.69%	51.46%	51.56%
<b>Total</b>	<b>100.00%</b>	<b>100.00%</b>	<b>100.00%</b>	<b>100.00%</b>	<b>100.00%</b>	<b>100.00%</b>	<b>100.00%</b>	<b>100.00%</b>	<b>100.00%</b>	<b>100.00%</b>	<b>100.00%</b>	<b>100.00%</b>	<b>100.00%</b>	<b>100.00%</b>	<b>100.00%</b>
<b>All Sources</b>															
District Sources	1,008,282	1,133,325	1,194,244	1,132,872	1,082,733	1,102,438	1,003,332	901,533	1,017,344	647,576	514,242	1,090,018	1,367,259	12,186,916	13,195,198
C.L.A.W.A.	849,865	809,024	1,007,165	1,212,072	1,465,534	1,980,696	1,835,348	1,460,575	1,794,720	1,696,003	1,322,968	1,382,554	1,382,554	17,349,213	18,199,078
<b>Total Sources</b>	<b>1,858,147</b>	<b>1,942,349</b>	<b>2,201,409</b>	<b>2,344,944</b>	<b>2,548,267</b>	<b>3,083,134</b>	<b>2,838,680</b>	<b>2,362,108</b>	<b>2,812,064</b>	<b>2,343,579</b>	<b>1,837,210</b>	<b>2,472,572</b>	<b>2,749,813</b>	<b>29,536,129</b>	<b>31,394,276</b>
District Sources	54.26%	58.35%	54.25%	48.31%	42.49%	35.76%	35.35%	38.17%	36.18%	27.63%	27.99%	44.08%	49.72%	41.26%	42.03%
C.L.A.W.A.	45.74%	41.65%	45.75%	51.69%	57.51%	64.24%	64.65%	61.83%	63.82%	72.37%	72.01%	55.92%	50.28%	58.74%	57.97%
<b>Total Sources</b>	<b>100.00%</b>	<b>100.00%</b>	<b>100.00%</b>	<b>100.00%</b>	<b>100.00%</b>	<b>100.00%</b>	<b>100.00%</b>	<b>100.00%</b>	<b>100.00%</b>	<b>100.00%</b>	<b>100.00%</b>	<b>100.00%</b>	<b>100.00%</b>	<b>100.00%</b>	<b>100.00%</b>

# Crestline Village Water District

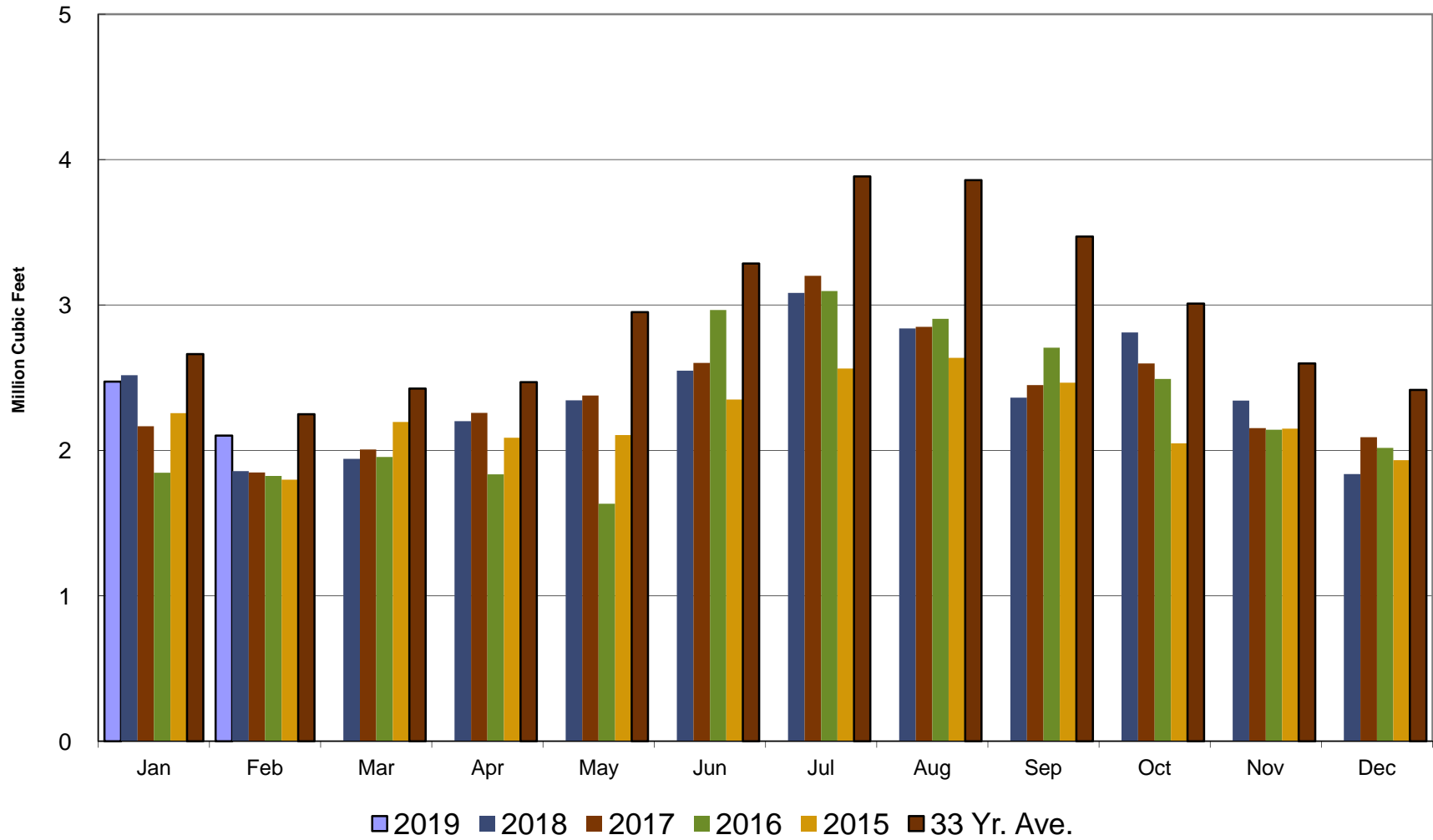
## Water Sources - Last 13 Months





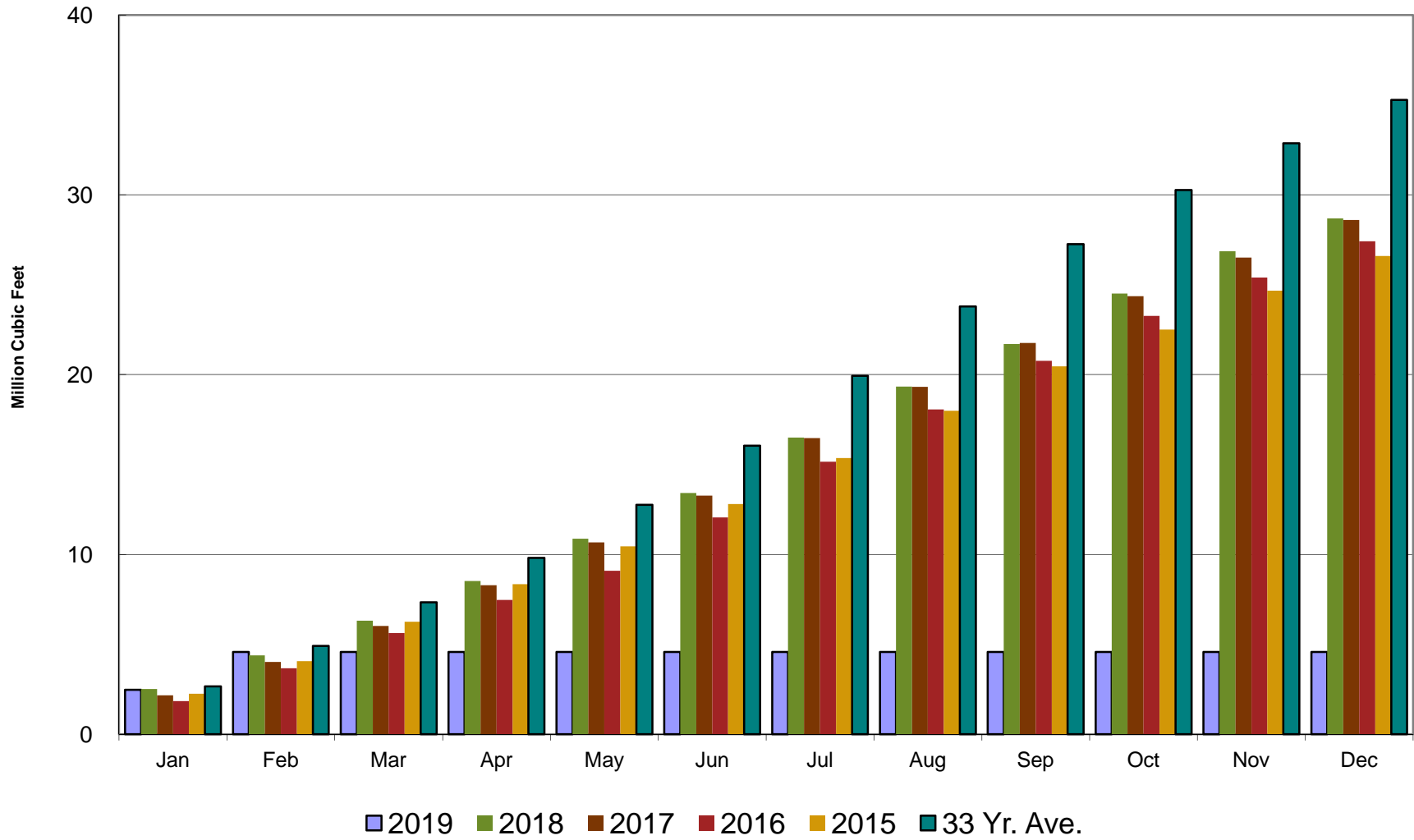
# Crestline Village Water District

## Total Production by Month



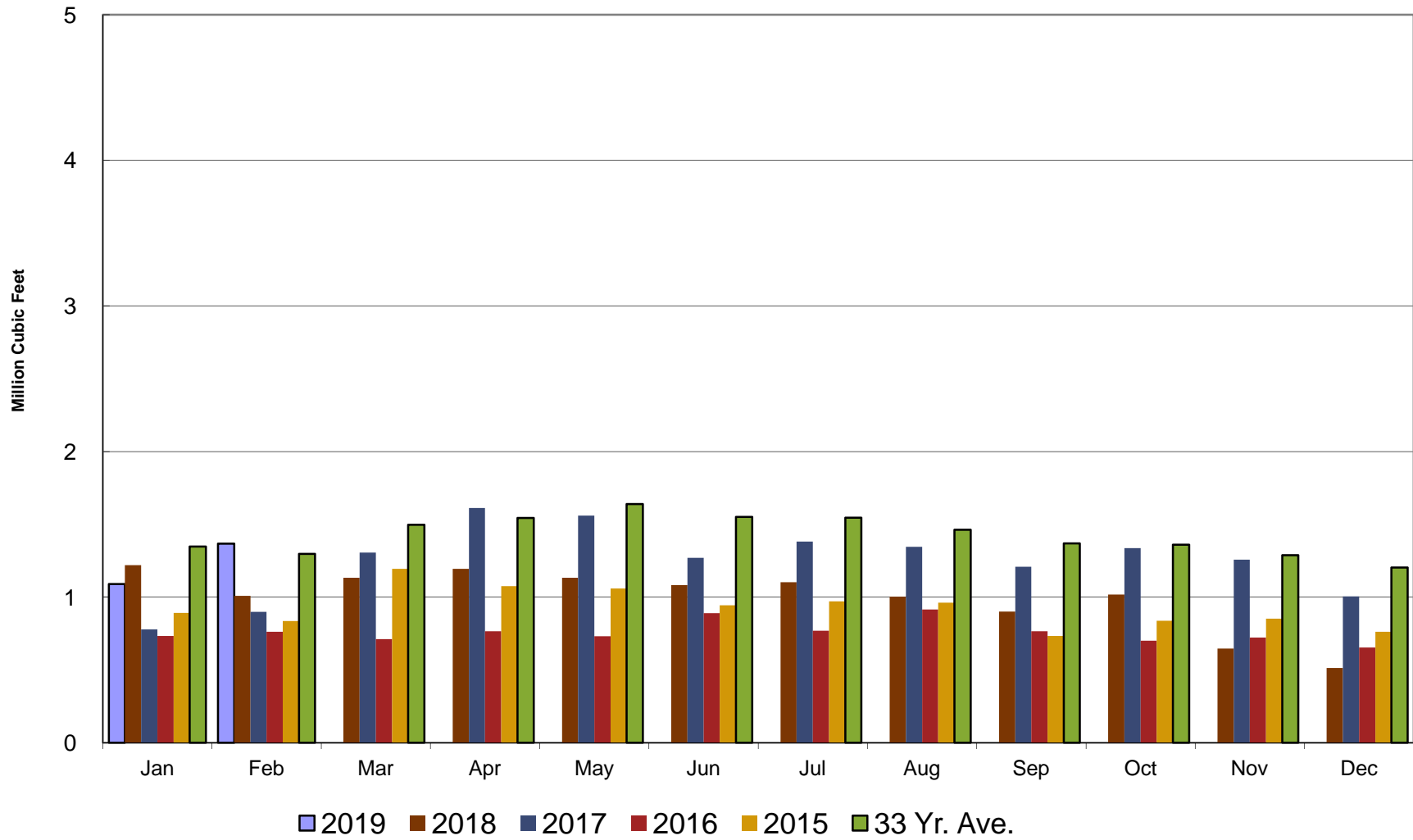
# Crestline Village Water District

## Total Production Cumulative



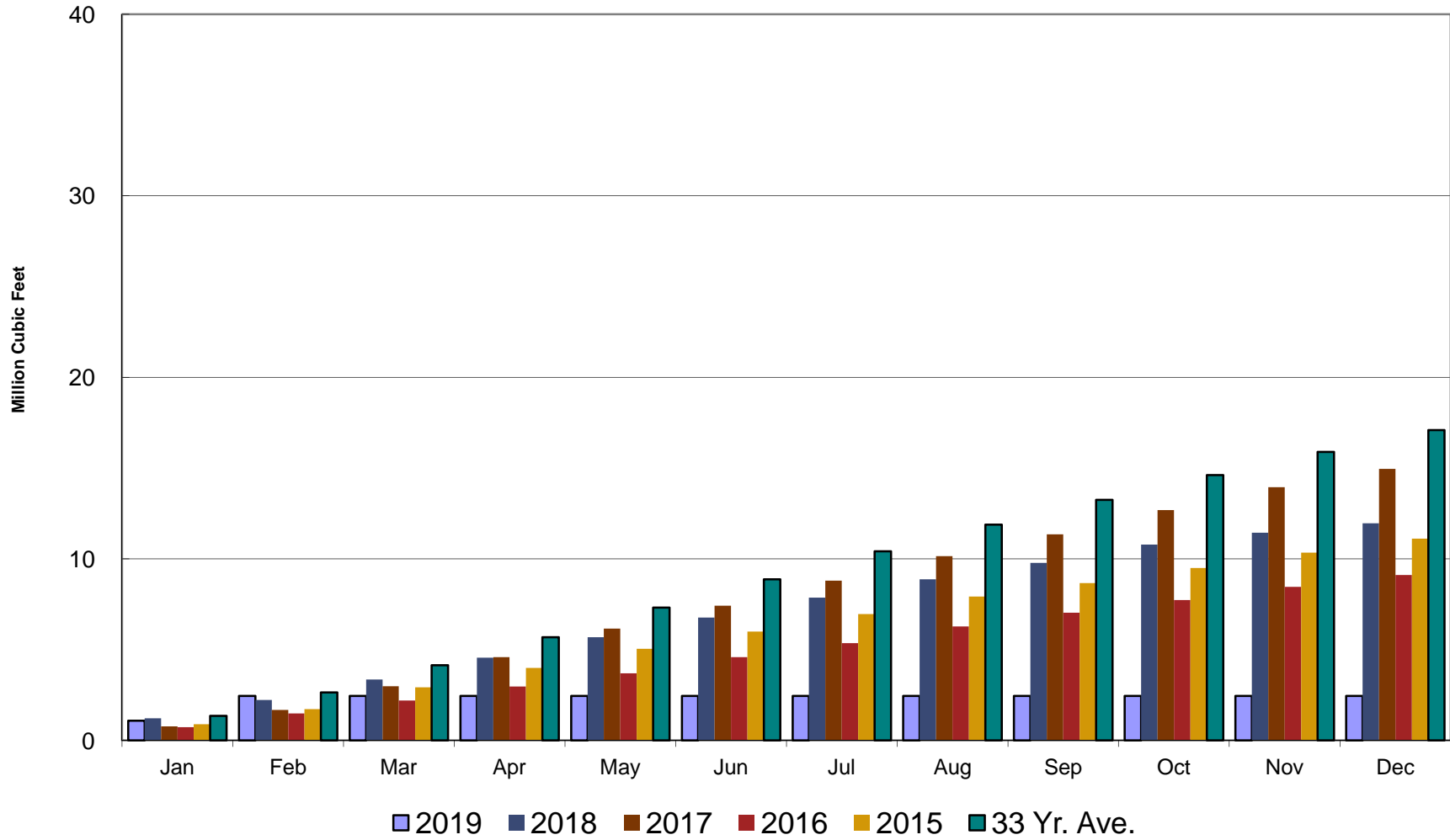
# Crestline Village Water District

## Well Production by Month



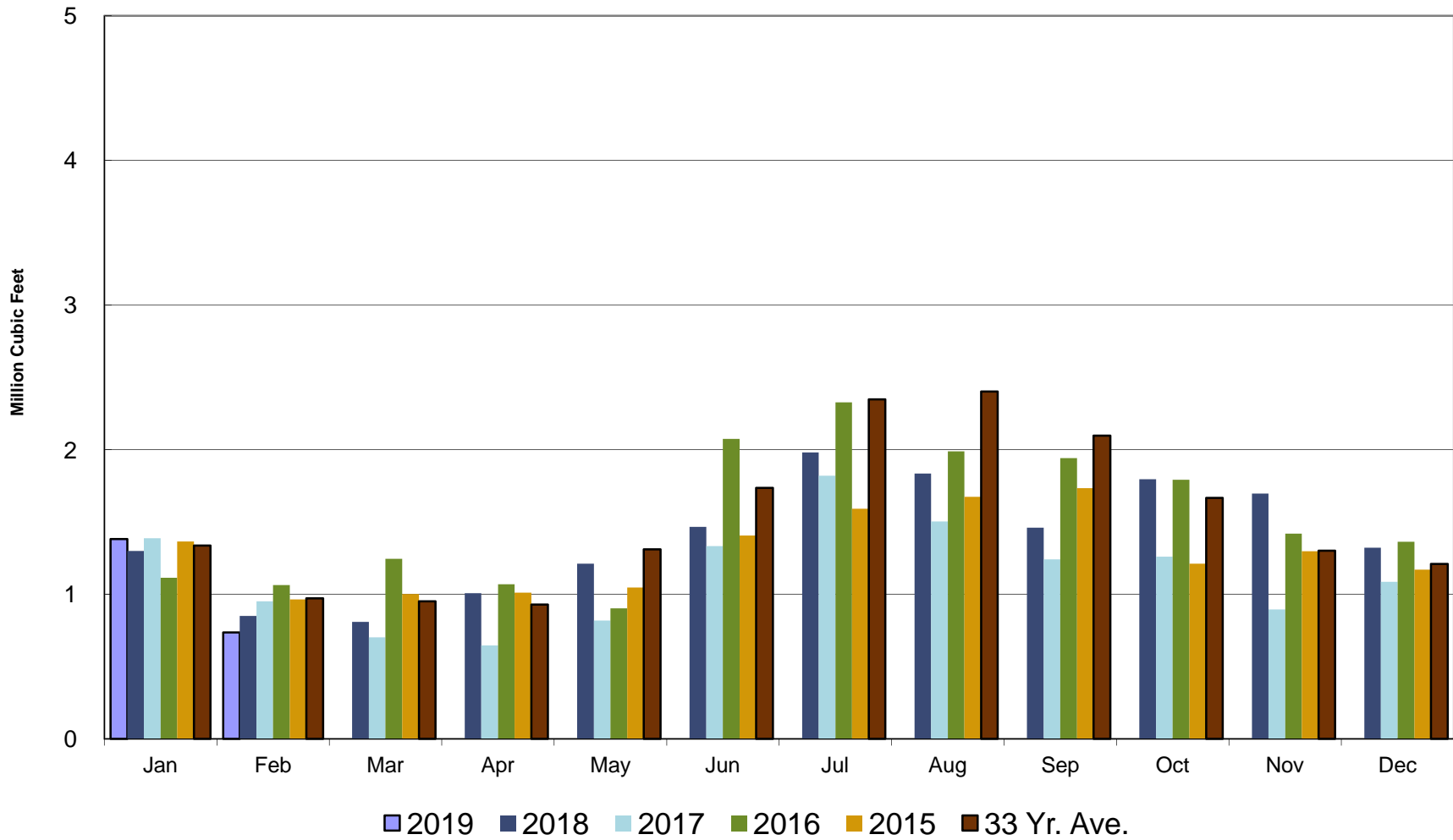
# Crestline Village Water District

## Well Production Cumulative



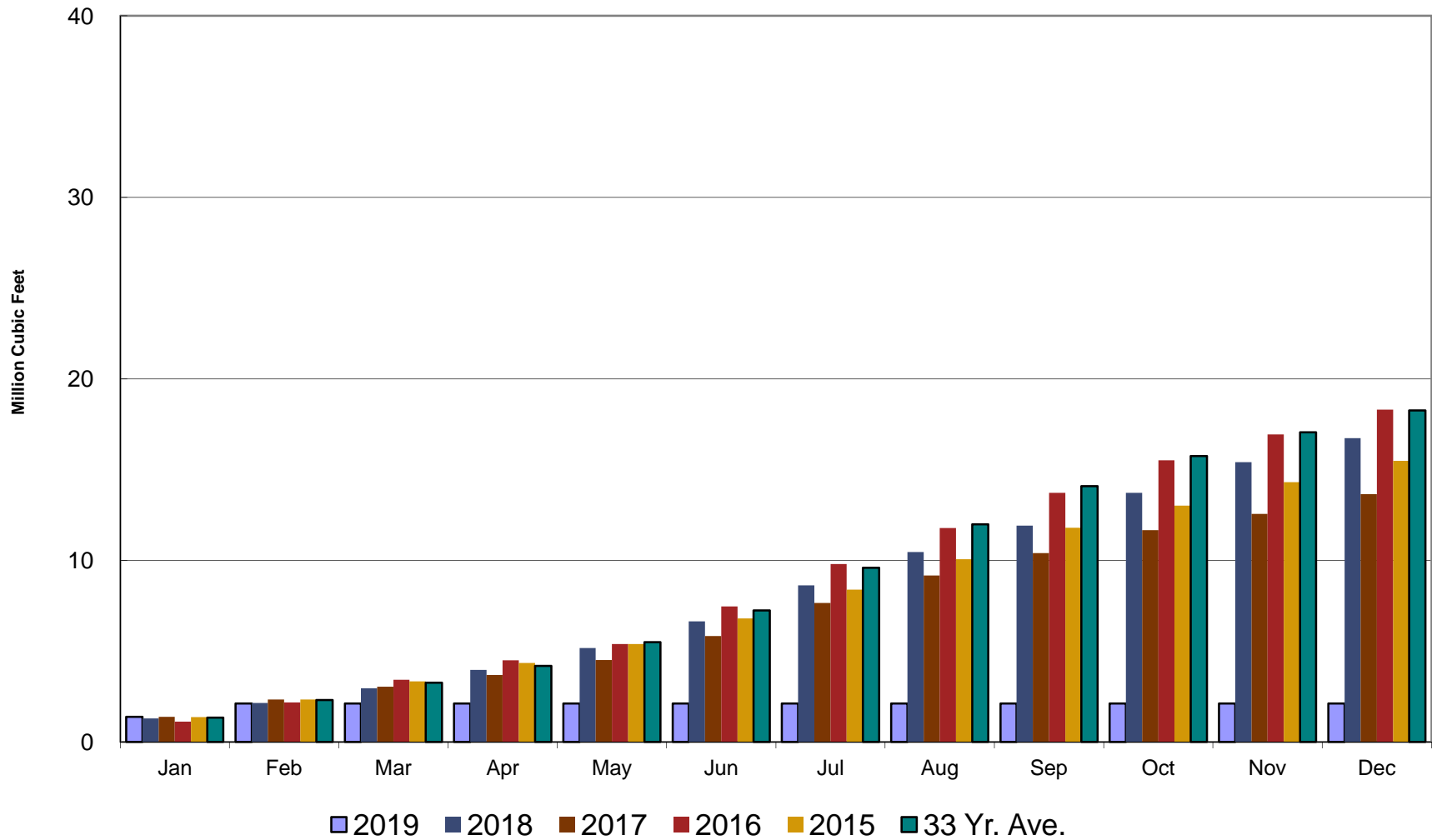
# Crestline Village Water District

## Purchased Water by Month



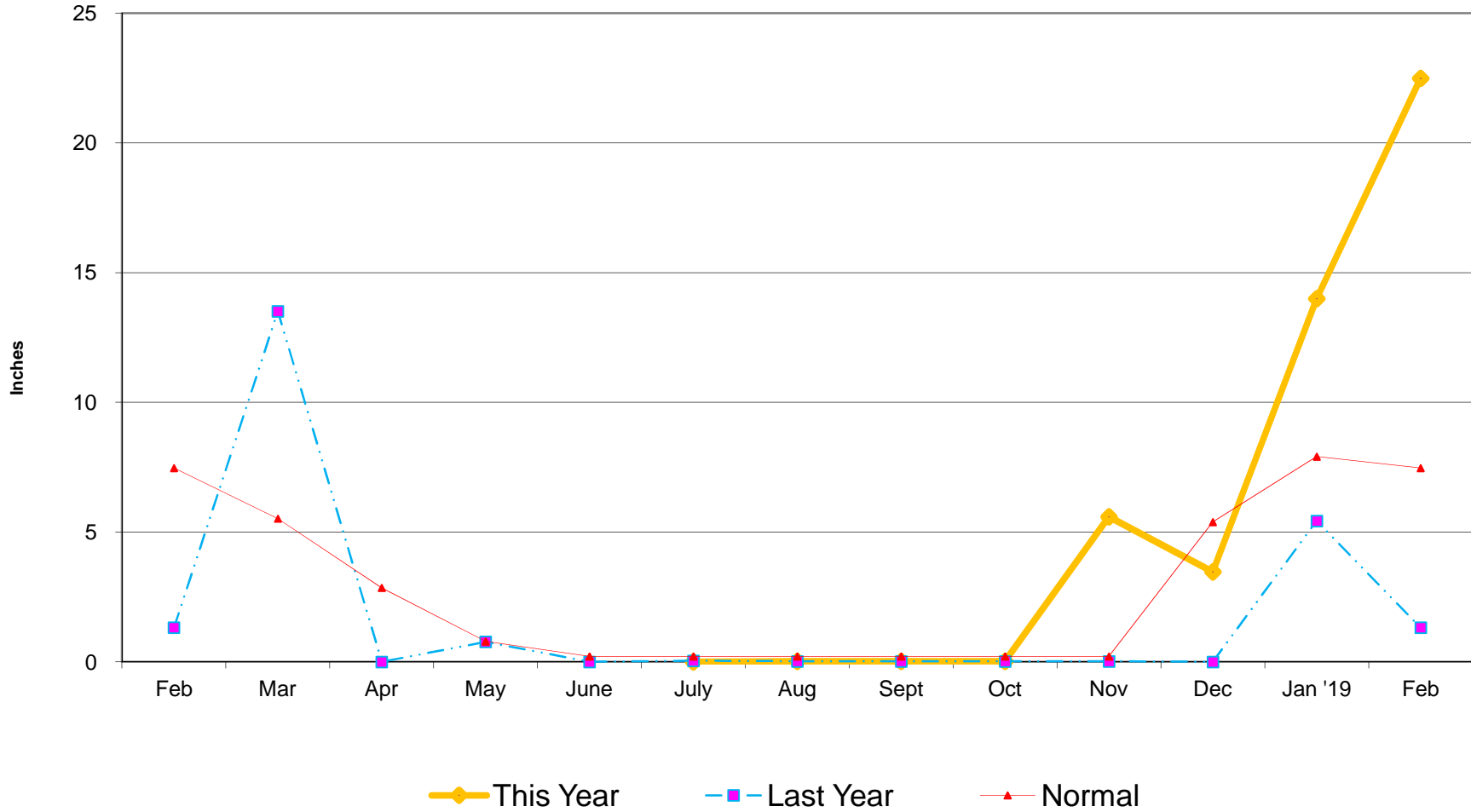
# Crestline Village Water District

## Purchased Water Cumulative



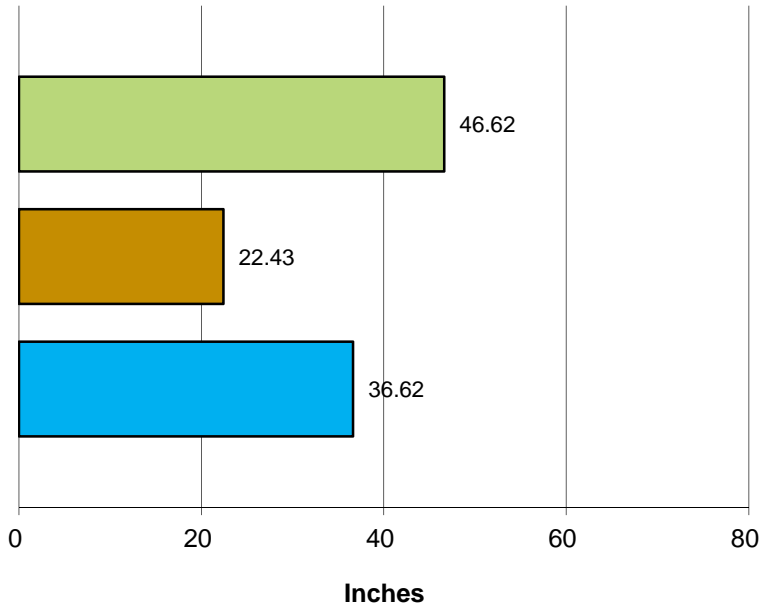
# Crestline Village Water District

## Rainfall - Last 13 Months



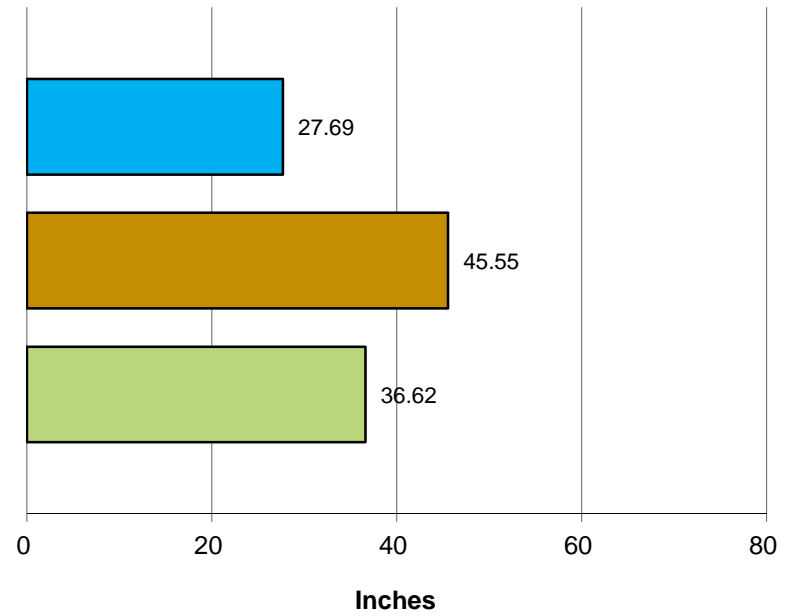
# Crestline Village Water District

**Total Rainfall  
July 1, 2018 to  
Beginning of Current Month**



■ This Year ■ Last Year ■ Normal

**Total Rainfall  
Last 12 Months**

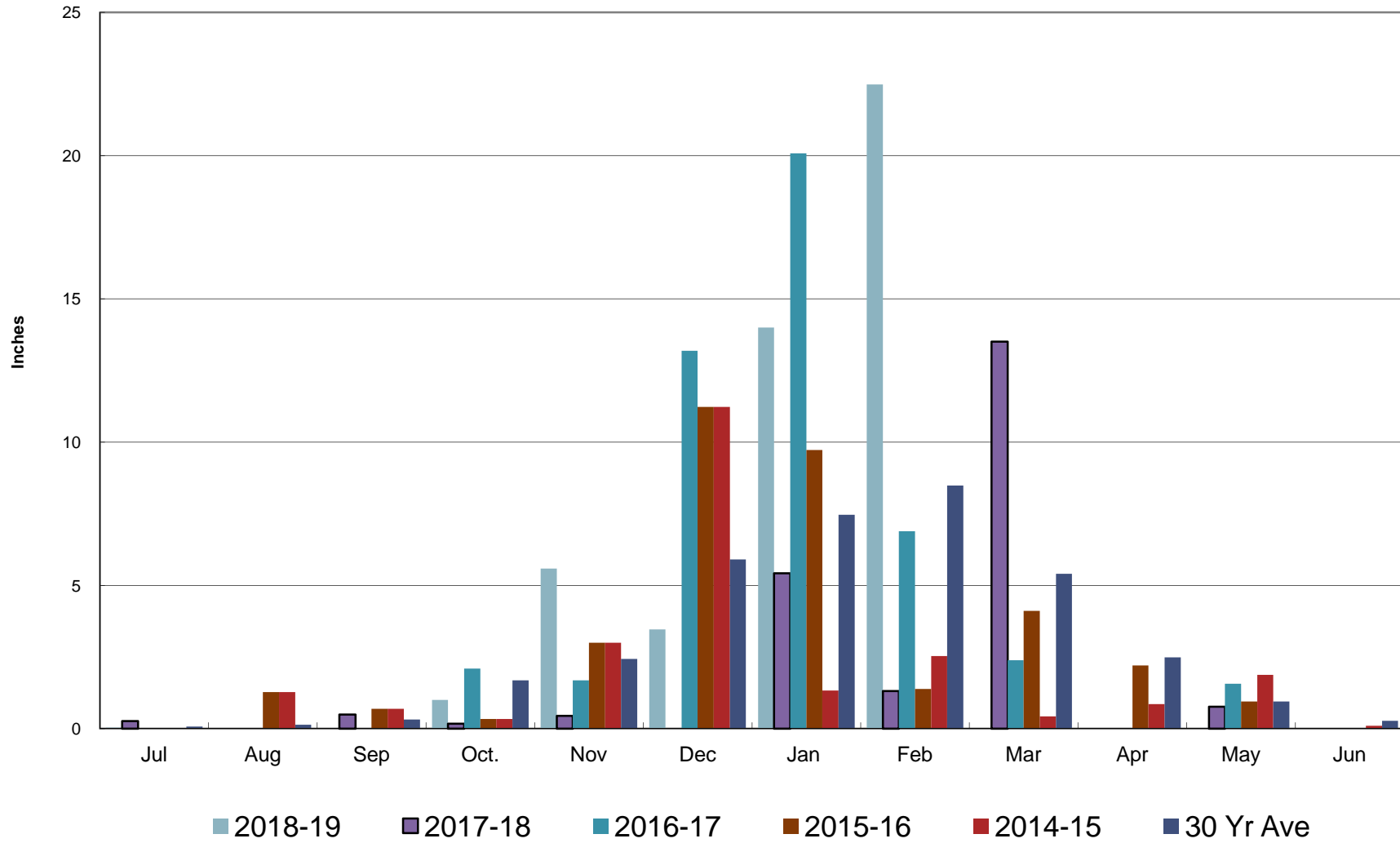


■ This Year ■ Last Year ■ Normal



# Crestline Village Water District

## Rainfall by Month



# Crestline Village Water District

## Rainfall Cumulative

