

Crestline Village Water District Source of Supply Production Report System Loss - Last 13 Months In Cubic Feet

Sources of Supply 25-2026	January	February	March	April	May	June	July	August	September	October	November	December	January	Average
Wells	1,329,313	1,408,245	1,588,054	1,555,877	1,641,672	1,952,114	2,075,309	1,940,991	1,748,421	1,715,081	1,663,478	1,469,749	1,500,861	1,717,410
Purchased Water	575,008	435,376	410,467	411,959	370,939	696,887	988,183	777,930	870,070	524,662	466,008	483,526	325,066	563,990
Adjustment to Wells *	0	0	0	0	0	0	0	0	0	0	0	0	0	0
Total Water Supplied	1,904,321	1,843,621	1,998,521	1,967,836	2,012,611	2,649,001	3,063,492	2,718,921	2,618,491	2,239,743	2,129,486	1,953,275	1,825,927	2,225,019

Metered Accounts	January	February	March	April	May	June	July	August	September	October	November	December	January	Average
Crestline Area	926,100	928,800	747,700	856,600	900,600	1,103,522	1,197,300	1,351,500	1,315,600	1,124,000	1,102,100	848,000	824,700	1,017,425
Lake Gregory Area	1,020,800	925,400	823,800	946,600	936,200	1,222,390	1,297,300	1,339,000	1,321,500	1,122,600	1,041,800	929,300	1,023,700	1,073,107
Change in Storage	43,640	23,133	(29,114)	9,129	(6,290)	342	58,006	(36,938)	16,597	(6,378)	(14,242)	32,680	(40,735)	3,833
Flushing, System & Other	2,984	2,695	5,164	20,454	20,743	5,804	16,743	13,971	4,007	4,174	17,560	14,483	19,043	11,371
Accounted for Water	1,993,524	1,880,028	1,547,550	1,832,783	1,851,253	2,332,058	2,569,349	2,667,533	2,657,704	2,244,396	2,147,218	1,824,463	1,826,708	2,105,736

Total Water Supplied - Total Water Sold

	January	February	March	April	May	June	July	August	September	October	November	December	January	Average
System Loss (CF)	(89,203)	(36,407)	450,971	135,053	161,358	316,943	494,143	51,388	(39,213)	(4,653)	(17,732)	128,812	(781)	119,283
System Loss (%)	-4.7%	-2.0%	22.6%	6.9%	8.0%	12.0%	16.1%	1.9%	-1.5%	-0.2%	-0.8%	6.6%	0.0%	5.0%
System Loss (GPM)	(14.9)	(6.8)	75.6	23.4	27.9	53.1	82.8	8.6	(6.8)	(0.8)	(3.1)	21.6	(0.1)	20.0

Month to Month Averaging

Month to Month Averaging ***	January	February	March	April	May	June	July	August	September	October	November	December	January	Average
System Loss (CF)	11,457	(62,805)	207,282	293,012	148,205	239,150	405,543	272,765	6,087	(21,933)	(11,193)	55,540	64,016	132,972
System Loss (%)	0.2%	-3.3%	10.3%	14.7%	7.4%	10.0%	14.0%	9.0%	0.2%	-0.9%	-0.5%	2.9%	3.3%	5.6%
System Loss (GPM)	1.6	(10.9)	34.4	49.5	25.7	40.5	68.0	45.7	0.9	(3.8)	(1.9)	9.3	10.7	20.7

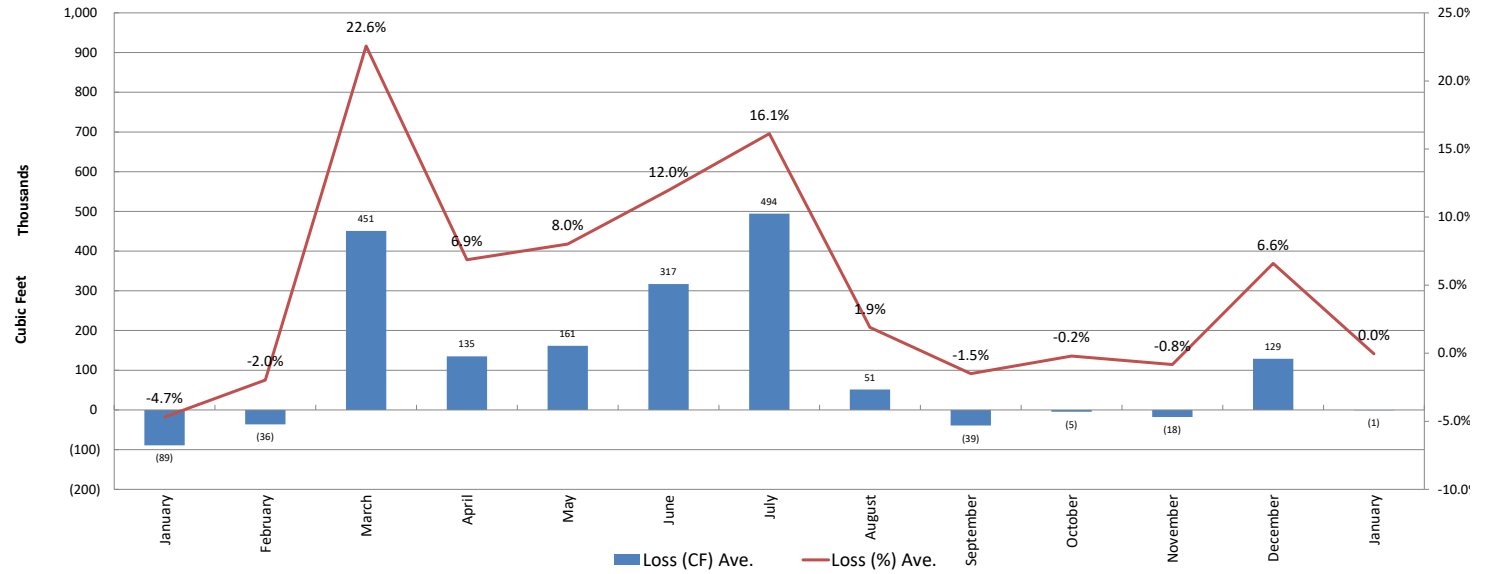
Total Estimated Losses

	January	February	March	April	May	June	July	August	September	October	November	December	January	Average
Total Loss	3,177	6,161	5,549	20,454	20,743	5,804	16,743	13,971	48,100	9,773	18,330	14,483	22,141	19,272
Unaccounted for Water (CF)	(89,203)	(36,407)	450,971	135,053	161,358	316,943	494,143	51,388	(39,213)	(4,653)	(17,732)	128,812	(781)	119,283
Unaccounted For (%)	-4.7%	-2.0%	22.6%	6.9%	8.0%	12.0%	16.1%	1.9%	-1.5%	-0.2%	-0.8%	6.6%	0.0%	5.0%
Number of Days in Period	31	28	31	30	30	30	31	31	30	31	30	31	31	30

	This Month	Average
Cost of System Loss:		\$4,787
Cost of 5% System Loss:		\$4,005
Amount above (below) 5% System Loss		\$0

Crestline Village Water District

System Loss Last 13 Months 2025-2026



Crestline Village Water District

System Loss Last 13 Months With Month to Month Averaging

