

Crestline Village Water District Source of Supply Production Report System Loss - Last 13 Months In Cubic Feet

	September	October	November	December	January	February	March	April	May	June	July	August	September	Average
Sources of Supply														
Wells	1,784,165	2,035,512	1,872,134	1,719,469	1,969,762	1,771,386	1,744,554	1,954,539	1,886,560	1,777,983	2,026,665	1,687,949	1,625,304	1,877,319
Purchased Water	542,487	417,313	226,243	256,324	152,607	154,105	203,128	24,733	397,380	723,864	1,102,981	1,112,309	957,335	585,428
Adjustment to Wells *	0	0	0	0										0
Total Water Supplied	2,326,652	2,452,825	2,098,377	1,975,793	2,122,369	1,925,491	1,947,682	1,979,272	2,283,940	2,501,847	3,129,646	2,800,258	2,582,639	2,317,445

Water Used **														
Metered Accounts														
Crestline Area	1,188,299	1,058,601	1,013,300	972,250	835,015	850,800	794,400	810,311	903,070	1,050,819	1,110,500	1,150,080	987,720	978,859
Lake Gregory Area	1,171,300	1,061,800	1,042,900	944,900	1,004,900	944,815	1,222,800	817,787	1,002,913	1,131,400	1,321,300	1,389,700	1,327,400	1,106,455
Change in Storage	8,805	7,177	(8,424)	2,224	(28,203)	53,567	(43,075)	(19,616)	(17,506)	63,543	(16,001)	(13,116)	1,750	(683)
Flushing, System & Other	3,251	17,321	4,139	3,438	2,984	2,791	11,031	23,289	22,984	3,556	3,318	16,213	2,888	9,016

Accounted for Water	2,371,655	2,144,899	2,051,915	1,922,812	1,814,696	1,851,973	1,985,156	1,631,771	1,911,461	2,249,318	2,419,117	2,542,877	2,319,758	2,093,647
----------------------------	------------------	------------------	------------------	------------------	------------------	------------------	------------------	------------------	------------------	------------------	------------------	------------------	------------------	------------------

Month to Month Averaging ***														
System Loss (CF)	(45,003)	307,926	46,462	52,981	307,673	73,518	(37,474)	347,501	372,479	252,529	710,529	257,381	262,881	223,799
System Loss (%)	-1.9%	12.6%	2.2%	2.7%	14.5%	3.8%	-1.9%	17.6%	16.3%	10.1%	22.7%	9.2%	10.2%	9.1%
System Loss (GPM)	(8.1)	50.0	8.0	9.5	48.4	13.2	(6.7)	58.2	60.5	46.8	111.8	44.6	3.7	33.8

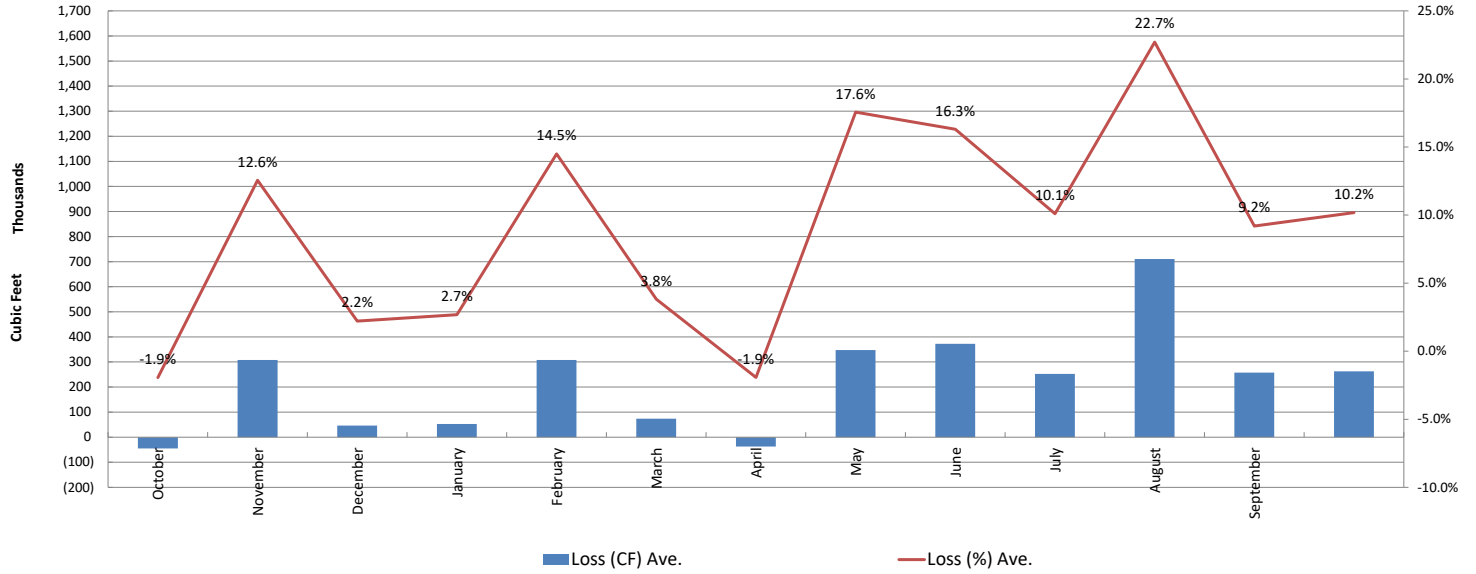
Month to Month Averaging ***														
System Loss (CF)	98,113	131,461	177,194	49,722	180,327	190,596	18,022	155,014	359,990	312,504	481,529	483,955	260,131	233,370
System Loss (%)	3.1%	5.3%	7.4%	2.4%	8.6%	9.2%	0.9%	7.8%	16.9%	13.2%	16.4%	15.9%	9.7%	9.5%
System Loss (GPM)	16.2	21.0	29.0	8.8	29.0	30.8	3.2	25.8	59.3	53.7	79.3	78.2	24.1	35.3

Estimated Uses														
Known leaks - Est. loss	7,171	13,530	241	0	0	0	5,329	1,952	689	1,893	54,261	9,433	1,005	7,346
Total Estimated Losses	10,422	30,851	4,380	3,438	2,984	2,791	16,360	25,241	23,673	5,449	57,579	25,646	3,893	15,839
Unaccounted for Water (CF)	(45,003)	307,926	46,462	52,981	307,673	73,518	(37,474)	347,501	372,479	252,529	710,529	257,381	262,881	223,799
Unaccounted For (%)	-1.9%	12.6%	2.2%	2.7%	14.5%	3.8%	-1.9%	17.6%	16.3%	10.1%	22.7%	9.2%	10.2%	9.1%
Unaccounted For (GPM)	(8.1)	50.0	8.0	9.5	48.4	13.2	(6.7)	58.2	60.5	46.8	111.8	44.6	3.7	36
Number of Days in Period	30	31	30	31	31	29	29	31	31	30	30	30	30	30

	This Month	Average
Cost of System Loss:	\$9,464	\$8,401
Cost of 5% System Loss:	\$5,040	\$4,171
Amount above (below) 5% System Loss	\$4,424	\$4,230

Crestline Village Water District

System Loss Last 13 Months
Month to Month



Crestline Village Water District

System Loss Last 13 Months
With Month to Month Averaging

