

**Crestline Village Water District  
Source of Supply Production Report  
System Loss - Last 13 Months  
In Cubic Feet**

01/14/15

	Nov	Dec	Jan '14	Feb	Mar	Apr	May	June	July	Aug	Aug	Oct	Nov	Total
<b>Sources of Supply</b>														
Wells	1,344,261	1,168,307	1,226,426	1,029,924	1,150,473	1,135,412	1,099,166	1,136,842	1,044,343	883,820	1,086,538	934,638	839,687	14,079,837
Purchased Water	1,111,284	1,081,043	1,081,351	712,366	886,925	941,993	1,333,475	1,919,117	2,235,695	1,814,132	1,703,475	1,510,400	1,281,686	17,612,942
Adjustment to Wells *	0	0	0	0	0	0	0	0	0	0	0	0	0	0
<b>Total Water Supplied</b>	<b>2,455,545</b>	<b>2,249,350</b>	<b>2,307,777</b>	<b>1,742,290</b>	<b>2,037,398</b>	<b>2,077,405</b>	<b>2,432,641</b>	<b>3,055,959</b>	<b>3,280,038</b>	<b>2,697,952</b>	<b>2,790,013</b>	<b>2,445,038</b>	<b>2,121,373</b>	<b>31,692,779</b>
<b>Water Used **</b>														
Metered Accounts														
Crestline Area	986,621	956,740	944,307	820,911	910,620	936,230	1,094,574	1,305,561	1,391,440	1,189,974	1,183,507	1,095,121	950,998	13,766,604
Lake Gregory Area	1,172,404	937,125	1,060,911	865,939	948,510	992,275	1,080,629	1,446,406	1,624,329	1,405,655	1,326,628	1,273,188	1,139,901	15,273,900
Change in Storage	(25,989)	31,137	57,593	(57,425)	(20,066)	14,489	(72,865)	24,026	61,310	33,081	(17,827)	(59,722)	18,650	(13,608)
Flushing, System & Other	206,322	106,860	65,024	21,980	19,669	19,061	25,889	18,939	17,739	16,439	18,774	15,794	14,439	566,929
<b>Accounted for Water</b>	<b>2,339,358</b>	<b>2,031,862</b>	<b>2,127,835</b>	<b>1,651,405</b>	<b>1,858,733</b>	<b>1,962,055</b>	<b>2,128,227</b>	<b>2,794,932</b>	<b>3,094,818</b>	<b>2,645,149</b>	<b>2,511,082</b>	<b>2,324,381</b>	<b>2,123,988</b>	<b>29,593,825</b>
<b>System Loss (CF)</b>	116,187	217,488	179,942	90,885	178,665	115,350	304,414	261,027	185,220	52,803	278,931	120,657	(2,615)	2,098,954
<b>System Loss (%)</b>	4.7%	9.7%	7.8%	5.2%	8.8%	5.6%	12.5%	8.5%	5.6%	2.0%	10.0%	4.9%	-0.1%	6.6%
<b>System Loss (GPM)</b>	18.9	40.3	29.2	16.9	29.9	20.0	52.7	43.7	31.0	9.5	45.3	20.2	(0.4)	29.9
<b>Month to Month Averaging ***</b>														
<b>System Loss (CF)</b>	58,094	166,838	198,715	135,414	134,775	147,008	209,882	282,721	223,124	119,012	165,867	199,794	59,021	2,100,265
<b>System Loss (%)</b>	2.4%	7.2%	8.7%	6.5%	7.0%	7.2%	9.0%	10.5%	7.1%	3.8%	6.0%	7.5%	2.4%	6.6%
<b>System Loss (GPM)</b>	9.4	29.6	34.8	23.0	23.4	25.0	36.3	48.2	37.4	20.2	27.4	32.7	9.9	29.9
<b>Estimated Uses</b>														
Known leaks - Est. loss	241	2,370	6,345	337	5,775	24,225	578	8,807	4,251	1,444	5,251	5,791	963	66,378
<b>Total Estimated Uses</b>	<b>241</b>	<b>2,370</b>	<b>6,345</b>	<b>337</b>	<b>5,775</b>	<b>24,225</b>	<b>578</b>	<b>8,807</b>	<b>4,251</b>	<b>1,444</b>	<b>5,251</b>	<b>5,791</b>	<b>963</b>	<b>66,378</b>
<b>Unaccounted for Water (CF)</b>	115,946	215,118	173,597	90,548	172,890	91,125	303,836	252,220	180,969	51,359	273,680	114,866	(3,578)	2,032,576
<b>Unaccounted For (%)</b>	4.7%	9.6%	7.5%	5.2%	8.5%	4.4%	12.5%	8.3%	5.5%	1.9%	9.8%	4.7%	-0.2%	6.4%
<b>Unaccounted For (GPM)</b>	18.8	39.9	28.2	16.8	29.0	15.8	52.6	42.3	30.3	9.2	44.4	19.2	(0.6)	28.9
<b>Number of Days in Period</b>	32	28	32	28	31	30	30	31	31	29	32	31	31	365

**NOTES:**

Estimated - Includes estimated billing period. This month includes estimated consumption. The following billing period will reflect adjustments to actual water used.

\* - Currently there are no Adjustments to Wells being made.

\*\* - Water Used - Metered Accounts is adjusted to the time period in Total Water Supplied

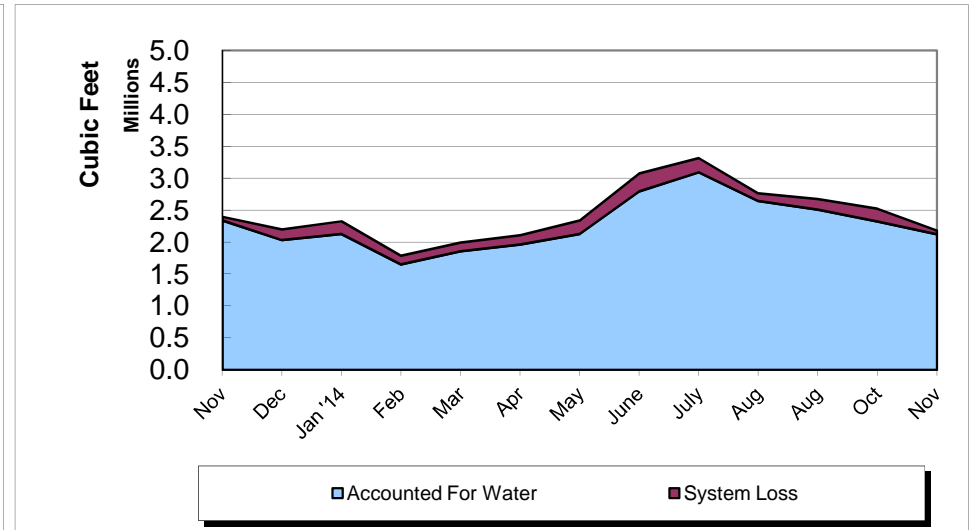
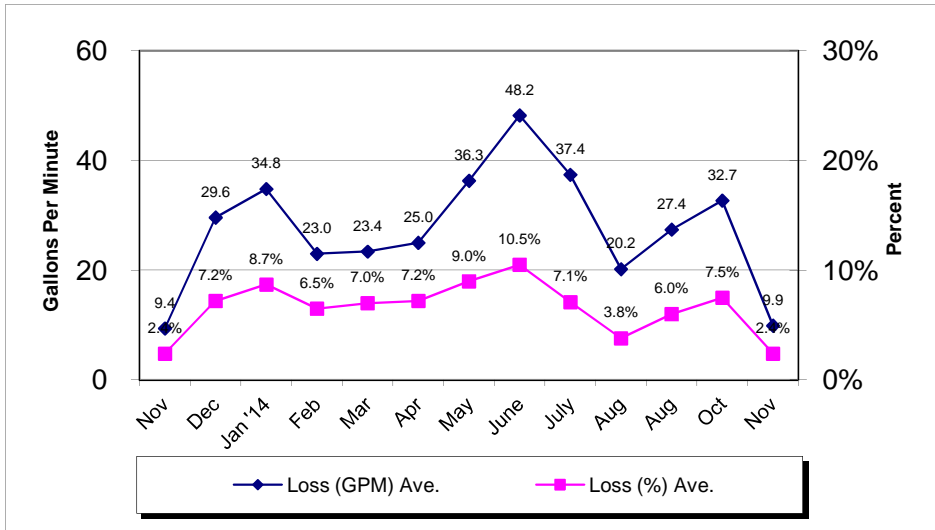
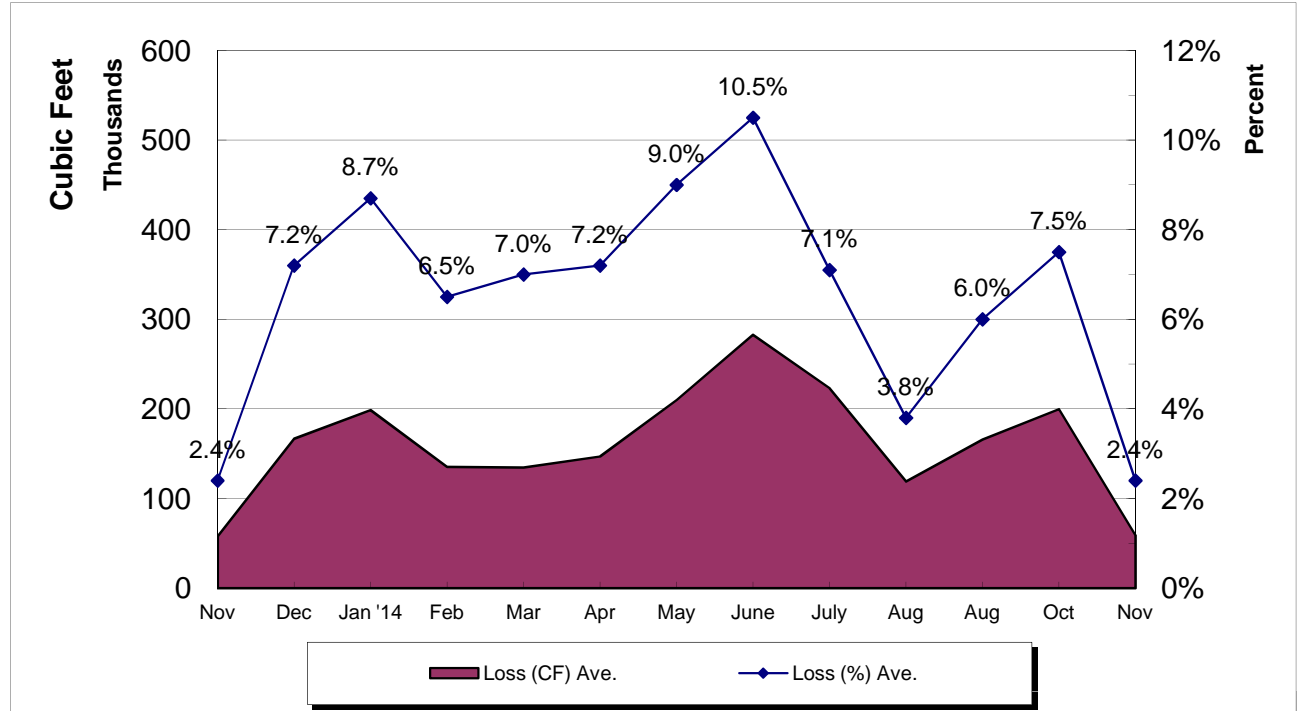
\*\*\* - Month to Month averaging averages the System Loss for each period with the immediately prior period for trending purposes.

System Loss Costs	This Month	Average
Cost of System Loss:	\$1,558	\$4,265
Cost of 5% System Loss:	2,800	3,218
<b>Amount above (below) 5% System Loss</b>	<b>(\$1,242)</b>	<b>\$1,047</b>
Note: Cost is calculated at highest cost (CLAWA Rate: \$2.64/100 c.f.)		

# Crestline Village Water District

## System Loss Last 13 Months

With Month to Month Averaging



**Crestline Village Water District**  
**System Report on: 12/01/14**

**For Month of: November 2014**

Water Storage (Gal)	Capacity	Gallons/ Foot	Level (FT)	Current Storage	% of Capacity
Beacon I & II	385,354	16,754	19.70	330,054	85.65%
Saxon	337,674	14,681	17.70	259,854	76.95%
Pinecrest I & II	2,063,492	54,302	31.10	1,688,792	81.84%
Zurich	171,245	7,611	20.30	154,503	90.22%
Lakeview	1,230,212	27,959	38.10	1,065,238	86.59%
Old Mill	705,900	27,150	24.40	662,460	93.85%
Barn	444,443	19,753	19.10	377,282	84.89%
Wilson	983,681	33,920	22.70	769,984	78.28%
Chillon	337,674	14,681	17.70	259,854	76.95%
Brookside	748,067	28,772	20.60	592,703	79.23%
Chamois	1,026,532	39,482	22.20	876,500	85.38%
<b>Total</b>	<b>8,434,274</b>		<b>253.60</b>	<b>7,037,224</b>	<b>83.44%</b>

WELLS	Production M-T-D (Cubic Feet)	Status
Altdorf	60,998	On
Pioneer-2	44,633	On
Pioneer-1	32,630	On
Old Mill Springs	16,590	On
Maple Springs	24,018	On
Willow Springs	3,030	On
Brookside Springs	8,150	On
Hillside Springs	8,100	On
Pinecrest 1 & 2	19,020	On
Pinecrest Vertical	0	Off
Cypress Vertical	89,140	On
Anderson Vertical	31,800	On
Wilson Springs 1 & 2	95,251	On
Wilson Vertical	78,900	On
Felsen Vertical	134,540	On
Horst	46,300	On
Jewel 64	72,576	On
Cathcart	18,900	On
Bergschrund	12,095	On
Chamois	0	Off
Chamois Vertical	38,600	On
	0	0
Chillon 64	0	Off
	0	0
Lewter	4,416	On
<b>Total</b>	<b>839,687</b>	

C.L.A.W.A.	FLOWS - GPM				Production M-T-D (Cubic Feet)
	Timed	Requested	Variance	% Variance	
CF - Crestline	50	50	0	0.00%	301,872
Mile High 2"	40	40	0	0.00%	232,487
Mile High 4"	0	0	0	0.00%	0
Pinecrest 2"	0	0	0	0.00%	0
Pinecrest 4"	120	120	0	0.00%	716,578
Lake Drive 2"	0	0	0	0.00%	0
Lake Drive 4"	0	0	0	0.00%	0
Camp Seely	0	0	0	0.00%	30,749
<b>Total</b>	<b>210</b>	<b>210</b>	<b>0</b>	<b>0.00%</b>	<b>1,281,686</b>

November Purchases	GPM	Cubic Feet	Wells	GPM	Cubic Feet
Last Year M-T-D:	180.4	1,076,612		218.2	1,302,199
Actual M-T-D:	214.8	1,281,686		140.7	839,687
Over/(Under) Last Year:	34.4	205,074.0		(77.5)	(462,512.0)

Total	GPM	Cubic Feet
Last Year M-T-D:	398.6	2,378,811
Actual M-T-D:	355.5	2,121,373
Over/(Under) Last Year:	(43.1)	(257,438.0)

**Crestline Village Water District  
Source of Supply Production Report  
Cubic Feet  
Last 13 Months**

01/14/15

<u>Source Name</u>	<u>November</u>	<u>December</u>	<u>January '14</u>	<u>February</u>	<u>March</u>	<u>April</u>	<u>May</u>	<u>June</u>	<u>July</u>	<u>August</u>	<u>September</u>	<u>October</u>	<u>November</u>	<u>Last 12 Months</u>	<u>13 Months</u>
<b>Division 10</b>															
Altdorf	74,466	65,955	76,202	64,375	76,237	68,536	66,587	66,498	65,108	59,679	64,427	61,843	60,998	796,445	870,911
Pioneer #2	56,206	48,471	52,238	47,128	51,721	48,985	47,961	48,578	47,425	43,959	47,717	45,813	44,633	574,629	630,835
Pioneer #1	47,108	41,224	42,795	38,958	57,516	45,501	51,728	40,081	37,655	33,243	35,677	33,762	32,630	490,770	537,878
Old Mill Springs	26,300	22,860	22,750	20,950	26,300	24,440	22,020	23,470	19,900	17,250	17,800	16,620	16,590	250,950	277,250
Maple Springs	51,481	42,586	45,213	37,324	40,766	36,909	35,069	34,328	32,422	28,737	29,337	27,505	24,018	414,214	465,695
Willow Springs	20,300	16,450	16,240	6,300	16,060	14,070	12,830	11,140	8,810	7,520	4,790	3,760	3,030	121,000	141,300
Brookside Springs	18,140	14,210	11,300	9,220	2,020	3,350	3,380	16,340	13,970	8,100	9,350	8,930	8,150	108,320	126,460
Hillside Springs	13,370	10,930	12,170	10,340	11,520	10,820	10,530	10,460	10,210	8,910	9,510	8,550	8,100	122,050	135,420
Pinecrest	39,040	32,570	35,030	28,910	36,280	33,350	33,570	32,430	29,810	25,650	25,920	22,760	19,020	355,300	394,340
Pinecrest Vertical	59,390	48,750	54,470	46,310	51,240	49,760	50,480	52,160	50,410	48,290	48,590	1,620	0	502,080	561,470
Cypress Vertical	98,070	84,070	96,270	82,570	93,290	90,610	71,830	91,570	90,890	84,810	92,890	89,030	89,140	1,056,970	1,155,040
Anderson Vertical	106,500	89,000	95,000	60,400	52,400	99,800	94,900	64,300	60,700	55,300	79,200	33,400	31,800	816,200	922,700
Division 10 Totals	610,371	517,076	559,678	452,785	515,350	526,131	500,885	491,355	467,310	421,448	465,208	353,593	338,109	5,608,928	6,219,299
<b>Division 20</b>															
Wilson Springs #1 & 2	134,407	118,007	125,789	110,596	113,716	109,378	108,981	108,286	104,535	97,023	100,706	97,356	95,251	1,289,624	1,424,031
Wilson Vertical	157,300	149,500	137,400	135,800	137,800	133,500	129,600	152,200	135,100	76,400	123,300	147,300	78,900	1,536,800	1,694,100
Felsen Vertical	197,810	171,210	167,090	125,550	167,220	166,870	154,190	183,340	168,100	90,430	188,450	138,940	134,540	1,855,930	2,053,740
Horst	71,500	60,800	67,400	55,700	61,500	58,100	56,600	56,900	54,600	49,000	51,900	48,300	46,300	667,100	738,600
Jewell No. 64	82,253	72,027	79,812	73,558	71,107	61,996	70,841	67,618	37,326	73,351	75,752	72,530	72,576	828,494	910,747
Cathcart	23,400	21,300	23,400	19,600	22,500	21,400	21,100	21,200	20,700	18,700	20,800	20,000	18,900	249,600	273,000
Bergschrund	18,292	15,556	17,929	14,134	14,817	13,642	12,829	10,662	12,099	15,691	15,053	13,174	12,095	167,681	185,973
Chamois	0	0	0	0	0	0	0	0	0	0	0	0	0	0	0
Chamois Vertical	43,740	38,190	42,800	37,560	41,550	39,870	39,350	40,410	39,920	37,350	40,720	38,970	38,600	475,290	519,030
Valle	0	0	0	0	0	0	0	0	0	0	0	0	0	0	0
Chillon 64 (stand-by)	0	0	0	0	0	0	0	0	0	0	0	0	0	0	0
Government	0	0	0	0	0	0	0	0	0	0	0	0	0	0	0
Lewter	5,188	4,641	5,128	4,641	4,913	4,525	4,790	4,871	4,653	4,427	4,649	4,475	4,416	56,129	61,317
Division 20 Totals	733,890	651,231	666,748	577,139	635,123	609,281	598,281	645,487	577,033	462,372	621,330	581,045	501,578	7,126,648	7,860,538
<b>Total District Sources</b>	<b>1,344,261</b>	<b>1,168,307</b>	<b>1,226,426</b>	<b>1,029,924</b>	<b>1,150,473</b>	<b>1,135,412</b>	<b>1,099,166</b>	<b>1,136,842</b>	<b>1,044,343</b>	<b>883,820</b>	<b>1,086,538</b>	<b>934,638</b>	<b>839,687</b>	<b>12,735,576</b>	<b>14,079,837</b>
<b>C.L.A.W.A.</b>															
Crest Forest 6"	303,877	341,310	283,556	273,262	304,144	293,048	292,246	392,513	434,091	337,567	361,631	361,631	301,872	3,976,871	4,280,748
Mile High Park 2"	182,540	164,158	128,824	109,291	181,845	174,078	94,037	0	0	0	0	0	232,487	1,084,720	1,267,260
Mile High Park 4"	0	0	0	0	0	0	104,011	230,749	273,128	249,198	269,251	269,251	0	1,395,588	1,395,588
Pinecrest 2"	0	443,757	77,527	0	0	0	0	0	0	0	0	0	0	521,284	521,284
Pinecrest 4"	522,193	67,914	562,567	329,813	374,198	454,412	788,636	1,214,973	1,358,690	1,190,909	1,031,417	1,031,417	716,578	9,121,524	9,643,717
Lake Drive 2"	0	0	0	0	0	0	0	0	0	94	0	0	0	94	94
Lake Drive 4"	0	0	0	0	0	0	0	0	93,583	0	0	0	0	93,583	93,583
Camp Seely	102,674	63,904	28,877	0	26,738	20,455	54,545	80,882	76,203	36,364	41,176	41,176	30,749	501,069	603,743
<b>C.L.A.W.A. Totals</b>	<b>1,111,284</b>	<b>1,081,043</b>	<b>1,081,351</b>	<b>712,366</b>	<b>886,925</b>	<b>941,993</b>	<b>1,333,475</b>	<b>1,919,117</b>	<b>2,235,695</b>	<b>1,814,132</b>	<b>1,703,475</b>	<b>1,703,475</b>	<b>1,281,686</b>	<b>16,694,733</b>	<b>17,806,017</b>
<b>Grand Totals</b>	<b>2,455,545</b>	<b>2,249,350</b>	<b>2,307,777</b>	<b>1,742,290</b>	<b>2,037,398</b>	<b>2,077,405</b>	<b>2,432,641</b>	<b>3,055,959</b>	<b>3,280,038</b>	<b>2,697,952</b>	<b>2,790,013</b>	<b>2,638,113</b>	<b>2,121,373</b>	<b>29,430,309</b>	<b>31,885,854</b>

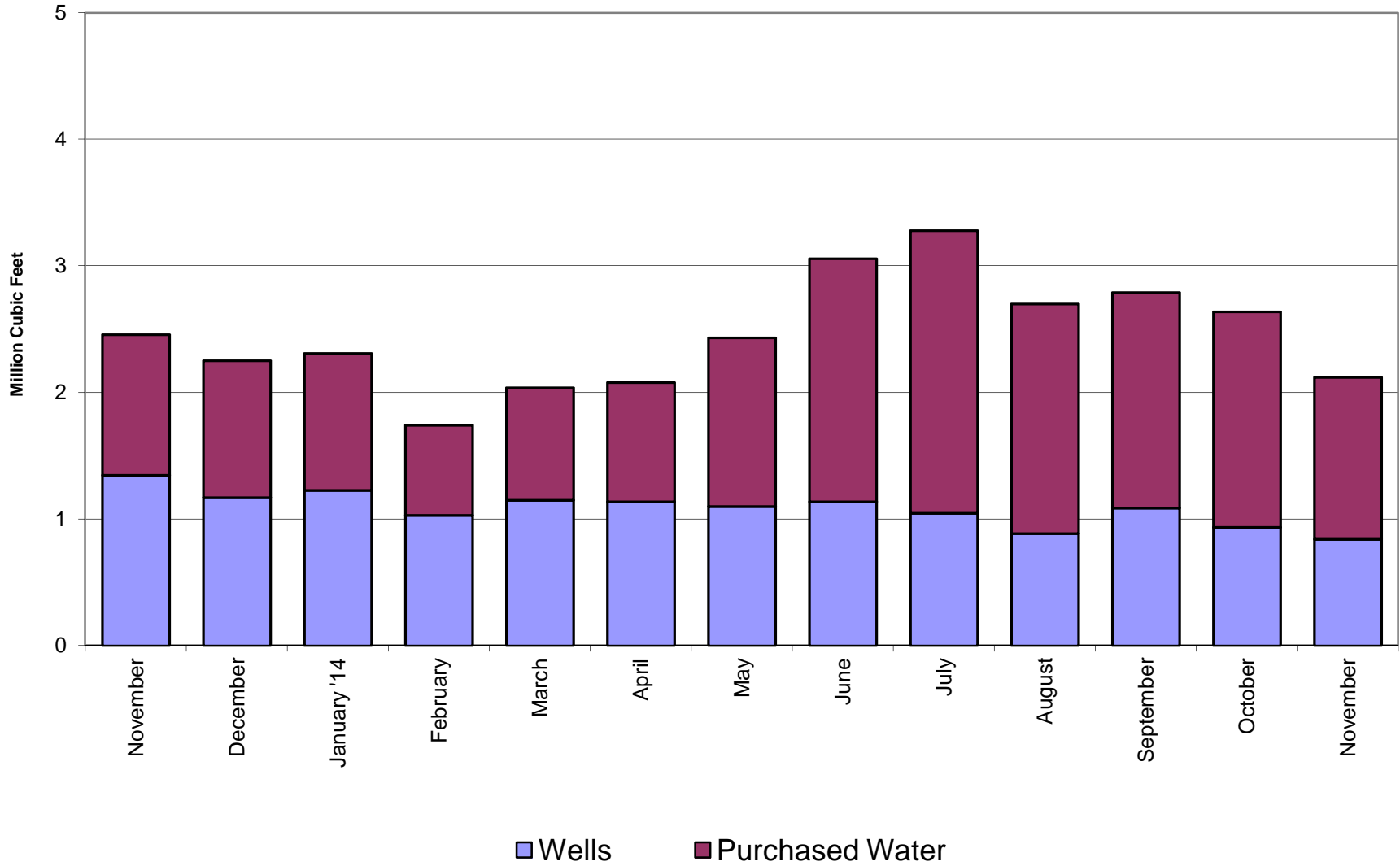
**Crestline Village Water District**  
**Source of Supply Production Report**  
**Cubic Feet**  
**Last 13 Months**

01/14/15

<u>Source Name</u>	<u>November</u>	<u>December</u>	<u>January '14</u>	<u>February</u>	<u>March</u>	<u>April</u>	<u>May</u>	<u>June</u>	<u>July</u>	<u>August</u>	<u>September</u>	<u>October</u>	<u>November</u>	<u>Last 12 Months</u>	<u>13 Months</u>
<b>District Sources</b>															
Division 10	610,371	517,076	559,678	452,785	515,350	526,131	500,885	491,355	467,310	421,448	465,208	353,593	338,109	5,608,928	6,219,299
Division 20	733,890	651,231	666,748	577,139	635,123	609,281	598,281	645,487	577,033	462,372	621,330	581,045	501,578	7,126,648	7,860,538
<b>Total</b>	<b>1,344,261</b>	<b>1,168,307</b>	<b>1,226,426</b>	<b>1,029,924</b>	<b>1,150,473</b>	<b>1,135,412</b>	<b>1,099,166</b>	<b>1,136,842</b>	<b>1,044,343</b>	<b>883,820</b>	<b>1,086,538</b>	<b>934,638</b>	<b>839,687</b>	<b>12,735,576</b>	<b>14,079,837</b>
Division 10	45.41%	44.26%	45.63%	43.96%	44.79%	46.34%	45.57%	43.22%	44.75%	47.68%	42.82%	37.83%	40.27%	44.04%	44.17%
Division 20	54.59%	55.74%	54.37%	56.04%	55.21%	53.66%	54.43%	56.78%	55.25%	52.32%	57.18%	62.17%	59.73%	55.96%	55.83%
<b>Total</b>	<b>100.00%</b>	<b>100.00%</b>	<b>100.00%</b>	<b>100.00%</b>	<b>100.00%</b>	<b>100.00%</b>	<b>100.00%</b>	<b>100.00%</b>	<b>100.00%</b>	<b>100.00%</b>	<b>100.00%</b>	<b>100.00%</b>	<b>100.00%</b>	<b>100.00%</b>	<b>100.00%</b>
<b>All Sources</b>															
District Sources	1,344,261	1,168,307	1,226,426	1,029,924	1,150,473	1,135,412	1,099,166	1,136,842	1,044,343	883,820	1,086,538	934,638	839,687	12,735,576	14,079,837
C.L.A.W.A.	1,111,284	1,081,043	1,081,351	712,366	886,925	941,993	1,333,475	1,919,117	2,235,695	1,814,132	1,703,475	1,703,475	1,281,686	16,694,733	17,806,017
<b>Total Sources</b>	<b>2,455,545</b>	<b>2,249,350</b>	<b>2,307,777</b>	<b>1,742,290</b>	<b>2,037,398</b>	<b>2,077,405</b>	<b>2,432,641</b>	<b>3,055,959</b>	<b>3,280,038</b>	<b>2,697,952</b>	<b>2,790,013</b>	<b>2,638,113</b>	<b>2,121,373</b>	<b>29,430,309</b>	<b>31,885,854</b>
District Sources	54.74%	51.94%	53.14%	59.11%	56.47%	54.66%	45.18%	37.20%	31.84%	32.76%	38.94%	35.43%	39.58%	43.27%	44.16%
C.L.A.W.A.	45.26%	48.06%	46.86%	40.89%	43.53%	45.34%	54.82%	62.80%	68.16%	67.24%	61.06%	64.57%	60.42%	56.73%	55.84%
<b>Total Sources</b>	<b>100.00%</b>	<b>100.00%</b>	<b>100.00%</b>	<b>100.00%</b>	<b>100.00%</b>	<b>100.00%</b>	<b>100.00%</b>	<b>100.00%</b>	<b>100.00%</b>	<b>100.00%</b>	<b>100.00%</b>	<b>100.00%</b>	<b>100.00%</b>	<b>100.00%</b>	<b>100.00%</b>

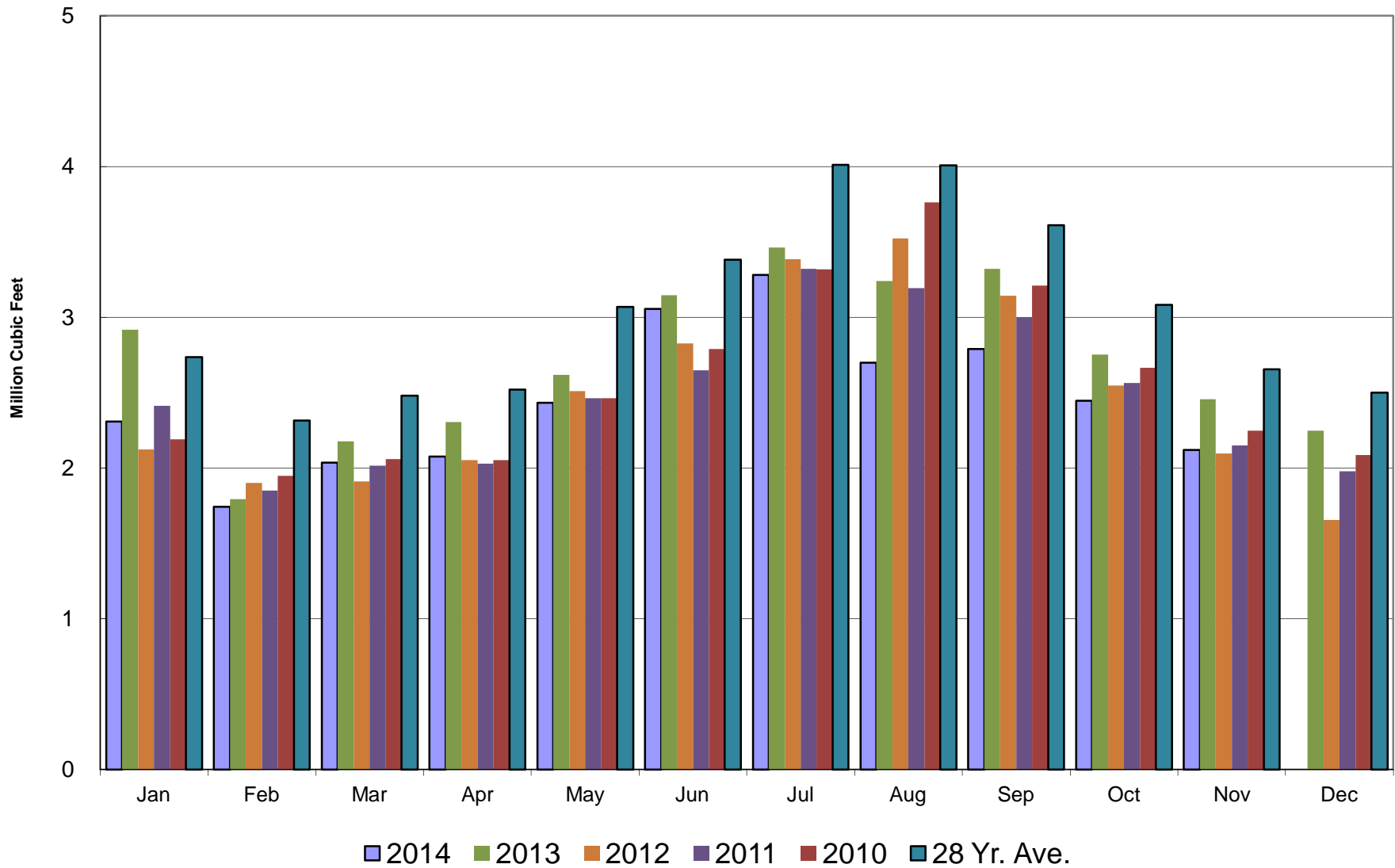
# Crestline Village Water District

## Water Sources - Last 13 Months



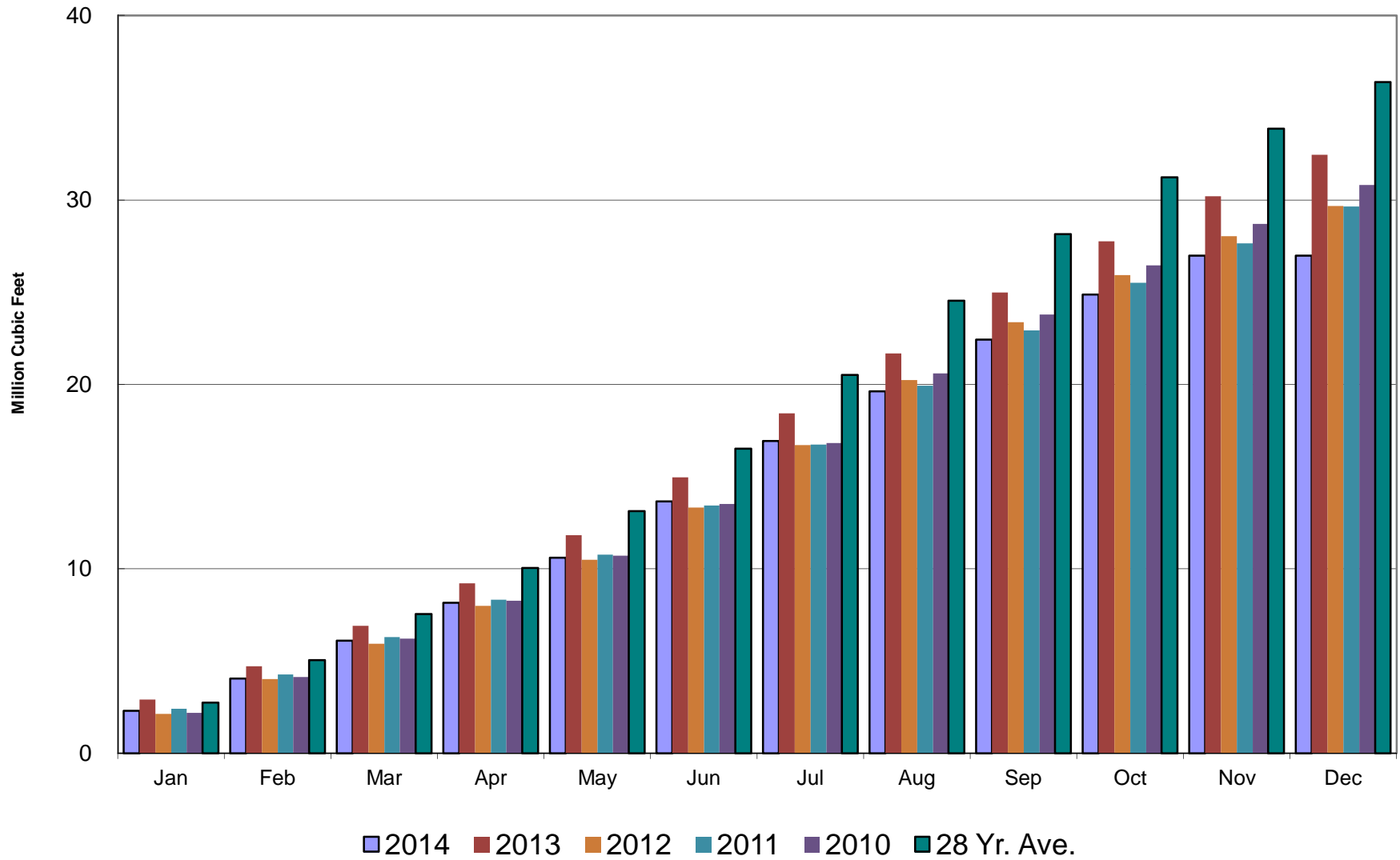
# Crestline Village Water District

## Total Production by Month



# Crestline Village Water District

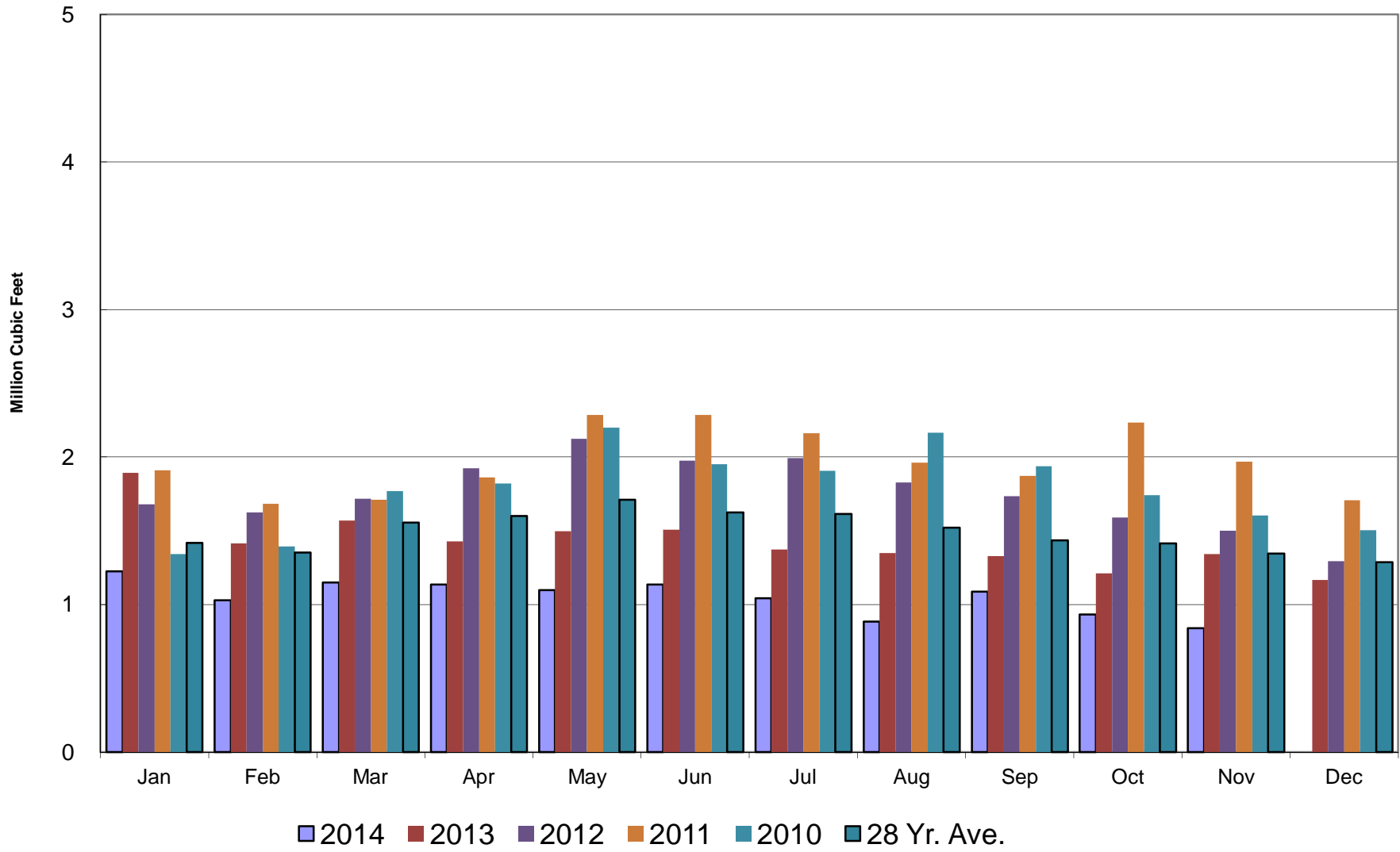
## Total Production Cumulative





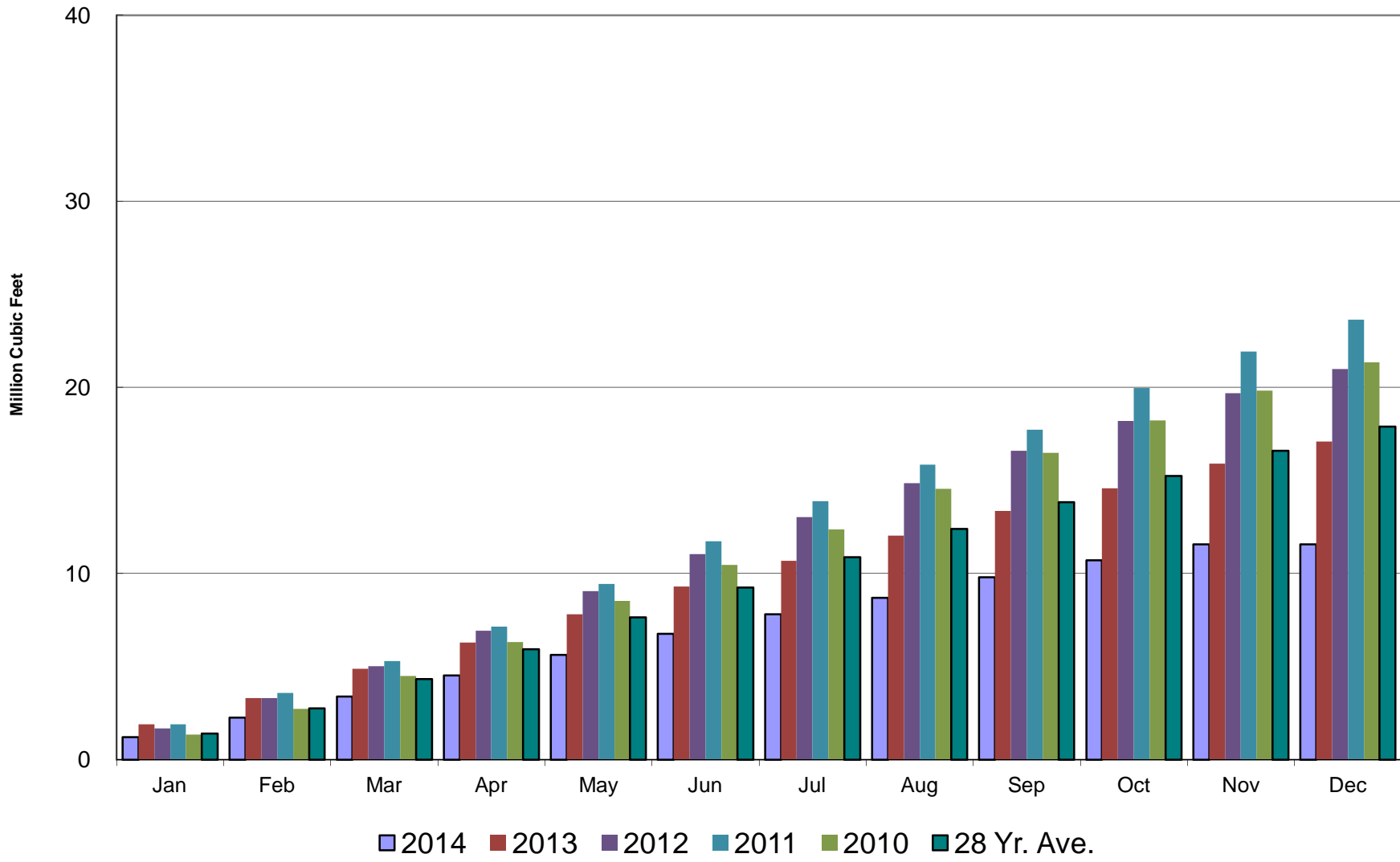
# Crestline Village Water District

## Well Production by Month



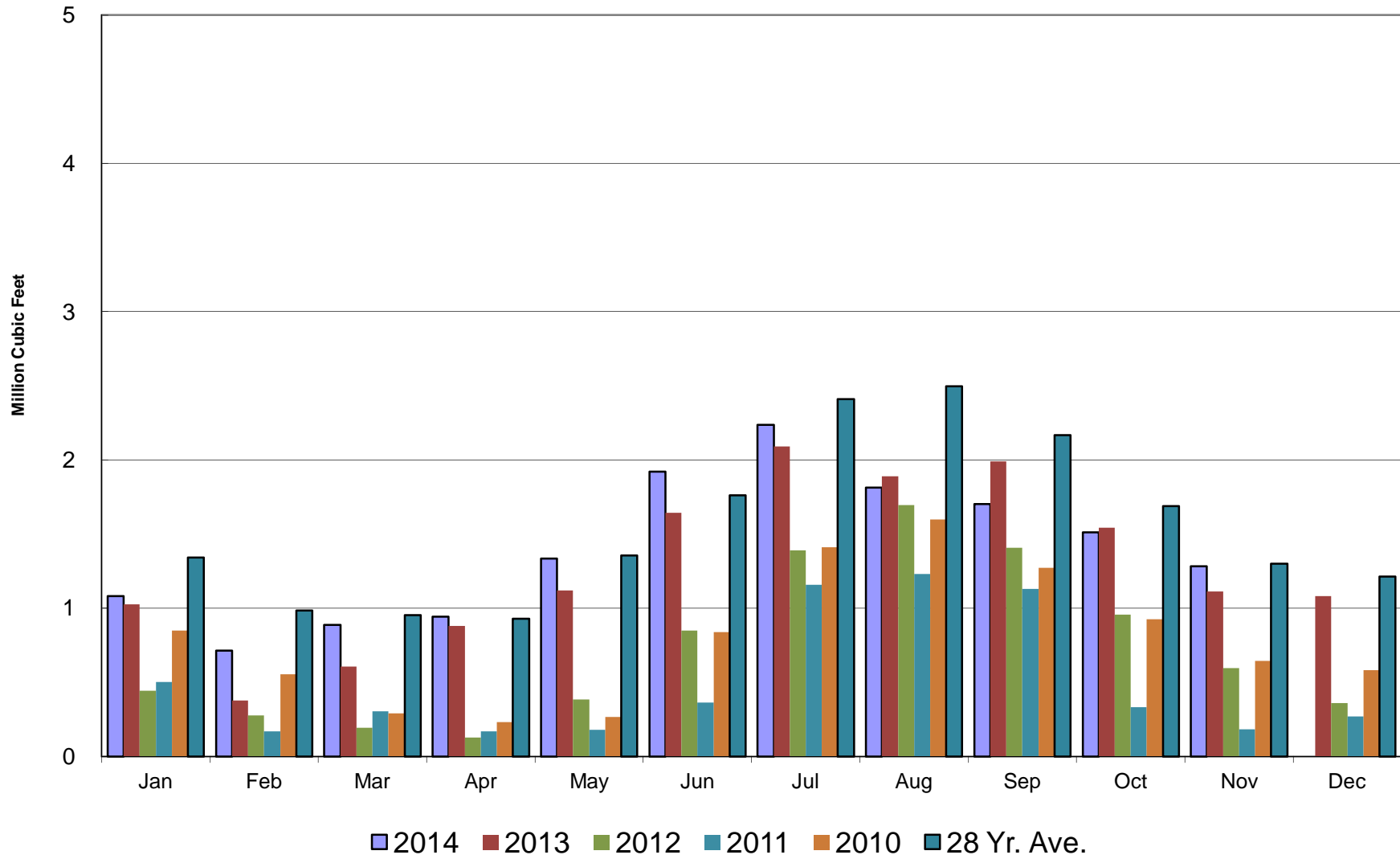
# Crestline Village Water District

## Well Production Cumulative



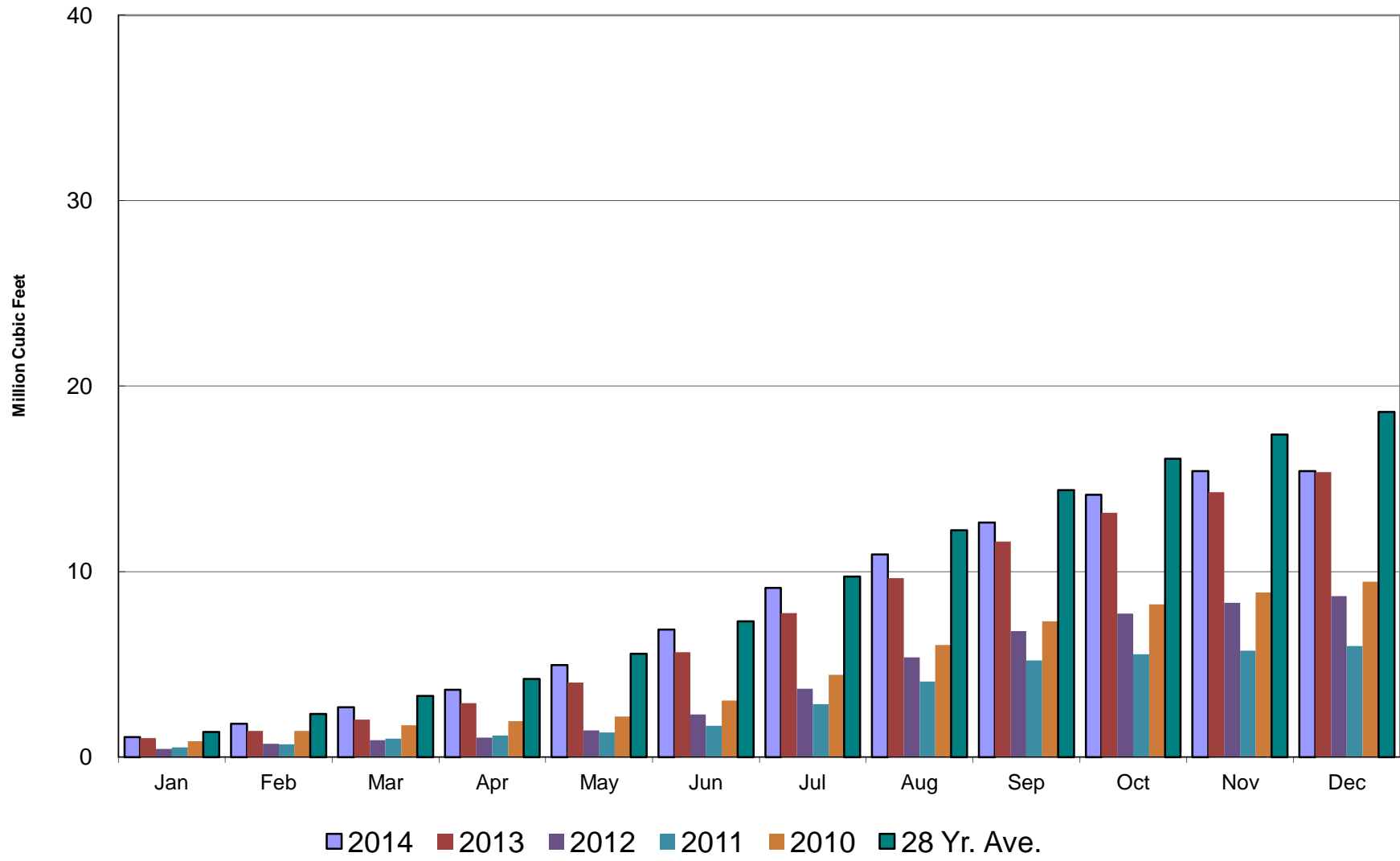
# Crestline Village Water District

## Purchased Water by Month



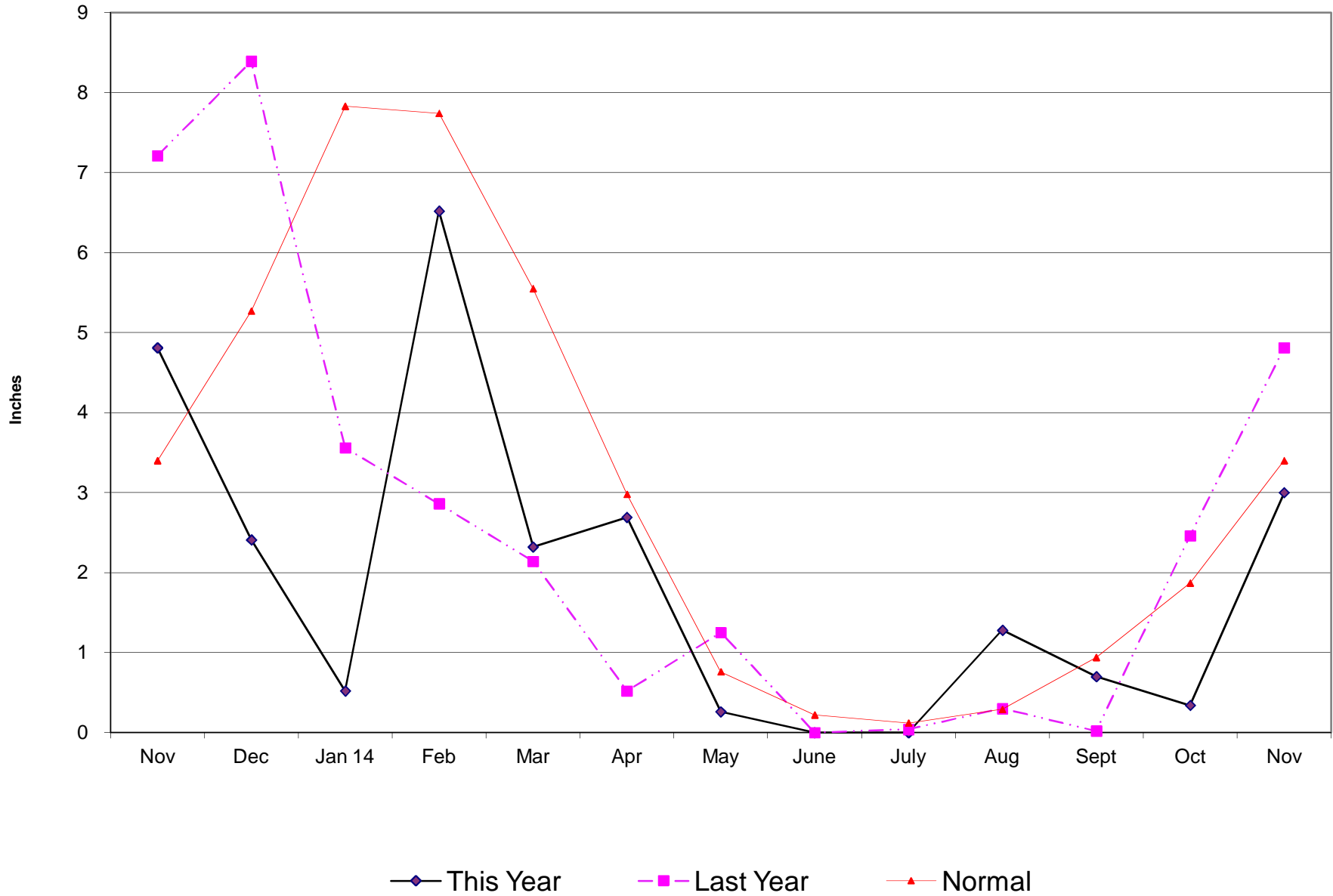
# Crestline Village Water District

## Purchased Water Cumulative



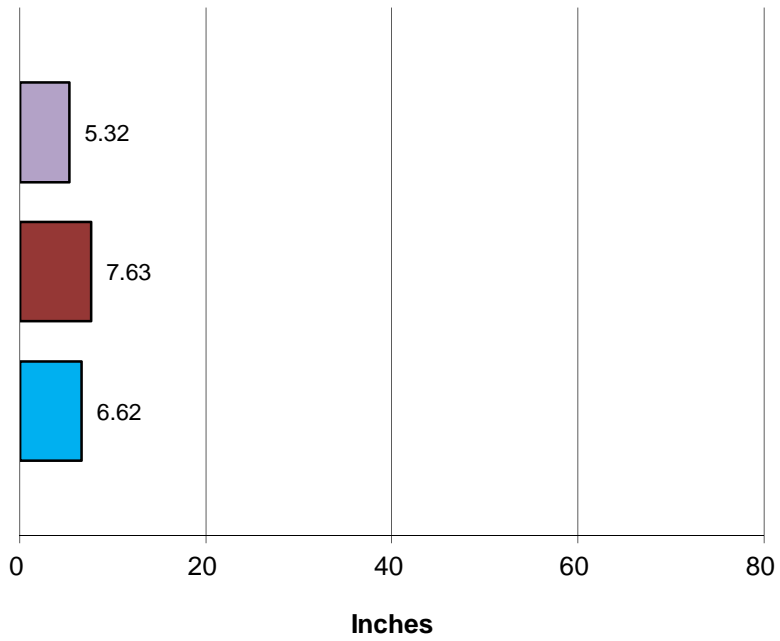
# Crestline Village Water District

## Rainfall - Last 13 Months



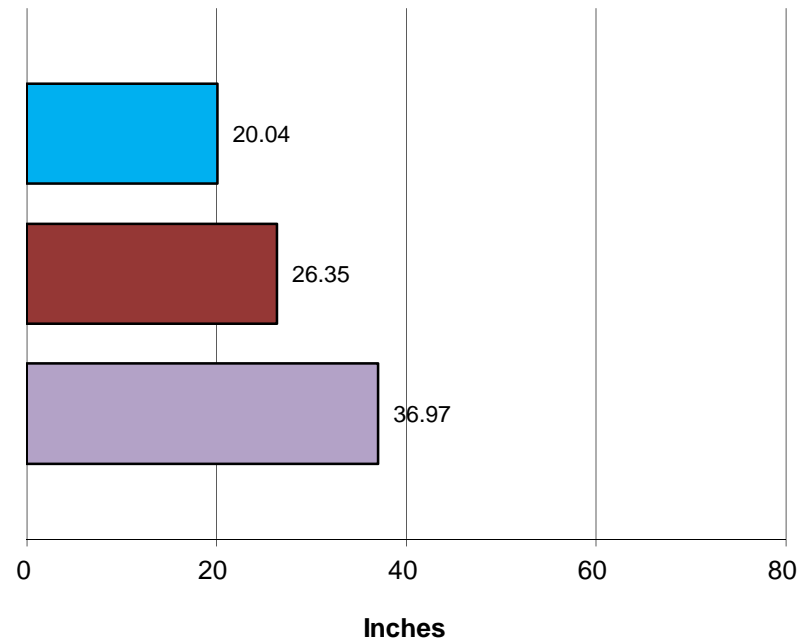
# Crestline Village Water District

## Total Rainfall July 1, 2014 to Beginning of Current Month



■ This Year ■ Last Year ■ Normal

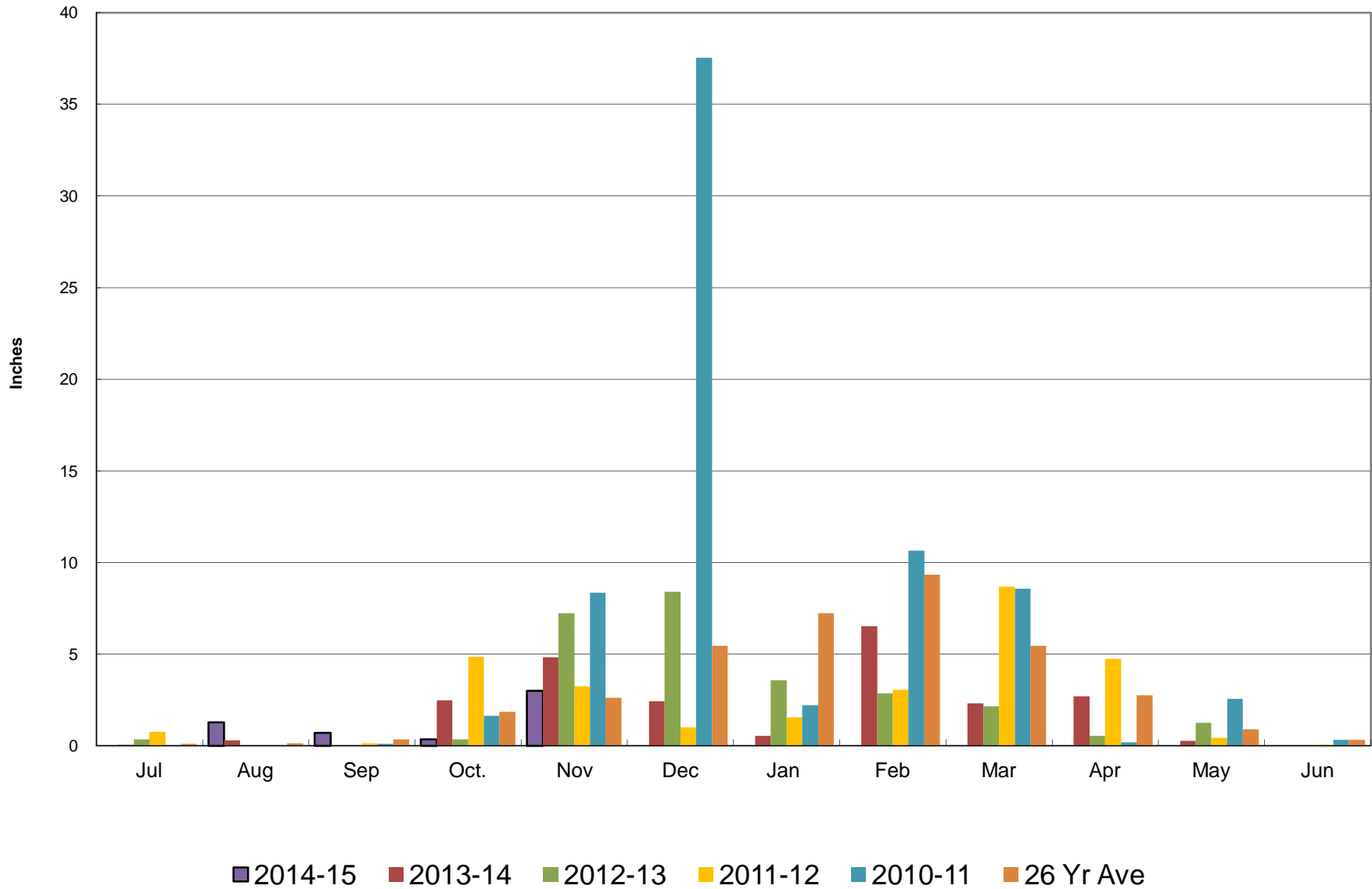
## Total Rainfall Last 12 Months



■ This Year ■ Last Year ■ Normal

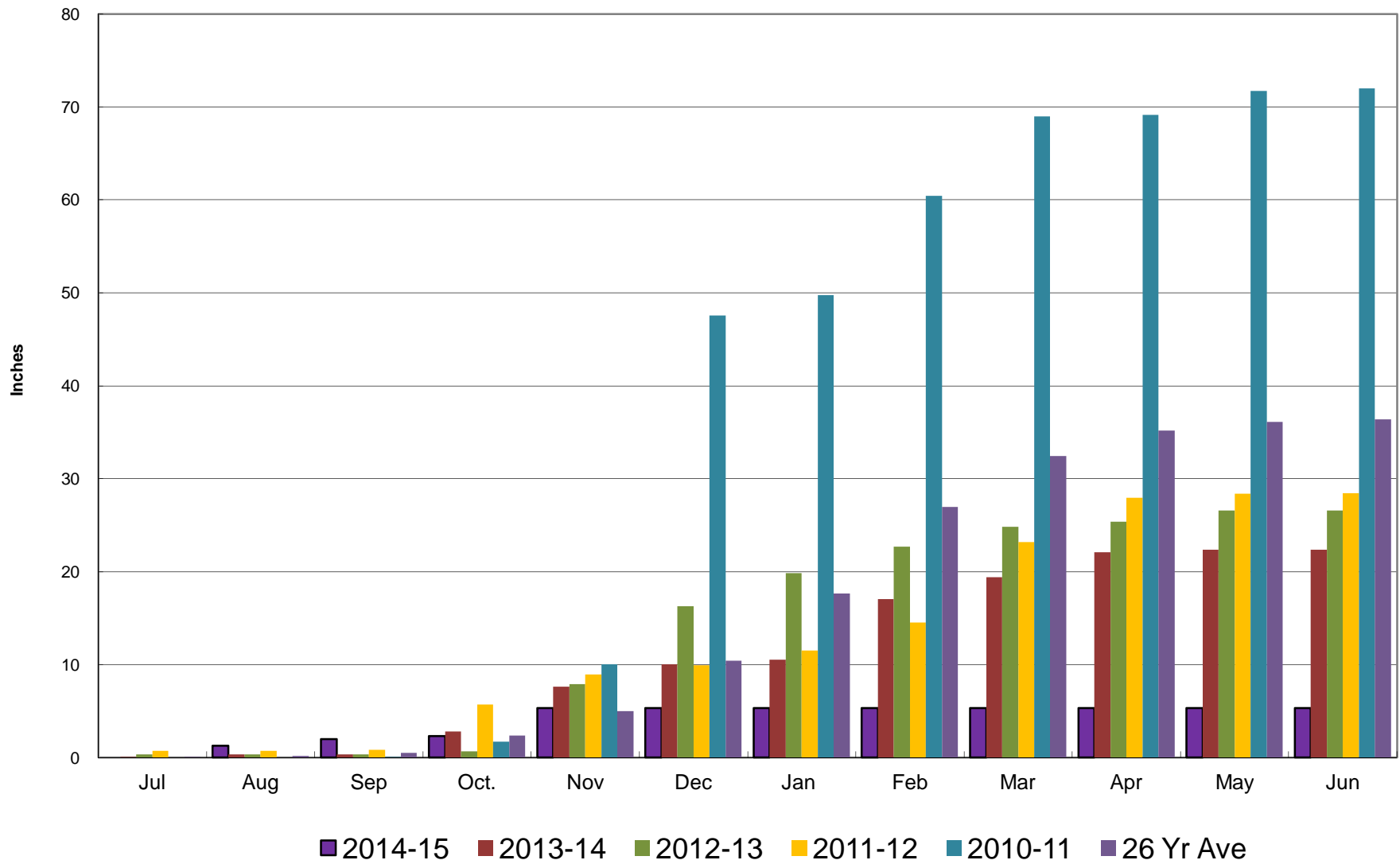
# Crestline Village Water District

## Rainfall by Month



# Crestline Village Water District

## Rainfall Cumulative





**Crestline Village Water District**  
**Change in Water Production - Cubic Feet**  
2013 to 2014

<b>2014 Production</b>	<b>Jan</b>	<b>Feb</b>	<b>Mar</b>	<b>Apr</b>	<b>May</b>	<b>Jun</b>	<b>Jul</b>	<b>Aug</b>	<b>Sep</b>	<b>Oct</b>	<b>Nov</b>	<b>Dec</b>	<b>Total</b>
Wells	1,226,426	1,029,924	1,150,473	1,135,412	1,099,166	1,136,842	1,044,343	883,820	1,086,538	934,638	839,687	859,313	12,426,582
CLAWA	1,081,351	712,366	886,925	941,993	1,333,475	1,919,117	2,235,695	1,814,132	1,703,475	1,510,400	1,281,686	1,085,776	16,506,391
<b>Total</b>	<b>2,307,777</b>	<b>1,742,290</b>	<b>2,037,398</b>	<b>2,077,405</b>	<b>2,432,641</b>	<b>3,055,959</b>	<b>3,280,038</b>	<b>2,697,952</b>	<b>2,790,013</b>	<b>2,445,038</b>	<b>2,121,373</b>	<b>1,945,089</b>	<b>28,932,973</b>

<b>2014 Cumulative</b>													
Wells	1,226,426	2,256,350	3,406,823	4,542,235	5,641,401	6,778,243	7,822,586	8,706,406	9,792,944	10,727,582	10,632,631	11,491,944	23,918,526
CLAWA	1,081,351	1,793,717	2,680,642	3,622,635	4,956,110	6,875,227	9,110,922	10,925,054	12,628,529	14,138,929	13,910,215	14,995,991	31,502,382
<b>Total</b>	<b>2,307,777</b>	<b>4,050,067</b>	<b>6,087,465</b>	<b>8,164,870</b>	<b>10,597,511</b>	<b>13,653,470</b>	<b>16,933,508</b>	<b>19,631,460</b>	<b>22,421,473</b>	<b>24,866,511</b>	<b>24,542,846</b>	<b>26,487,935</b>	<b>55,420,908</b>

<b>2013 Production</b>													
Wells	1,892,667	1,416,423	1,570,947	1,427,183	1,498,424	1,506,235	1,372,567	1,350,287	1,330,182	1,210,928	1,344,261	1,168,307	17,088,411
CLAWA	1,026,069	378,743	606,417	878,490	1,119,532	1,641,898	2,091,243	1,889,105	1,991,017	1,541,056	1,111,284	1,081,043	15,355,897
<b>Total</b>	<b>2,918,736</b>	<b>1,795,166</b>	<b>2,177,364</b>	<b>2,305,673</b>	<b>2,617,956</b>	<b>3,148,133</b>	<b>3,463,810</b>	<b>3,239,392</b>	<b>3,321,199</b>	<b>2,751,984</b>	<b>2,455,545</b>	<b>2,249,350</b>	<b>32,444,308</b>

<b>2013 Cumulative</b>													
Wells	1,892,667	3,309,090	4,880,037	6,307,220	7,805,644	9,311,879	10,684,446	12,034,733	13,364,915	14,575,843	15,920,104	17,088,411	
CLAWA	1,026,069	1,404,812	2,011,229	2,889,719	4,009,251	5,651,149	7,742,392	9,631,497	11,622,514	13,163,570	14,274,854	15,355,897	
<b>Total</b>	<b>2,918,736</b>	<b>4,713,902</b>	<b>6,891,266</b>	<b>9,196,939</b>	<b>11,814,895</b>	<b>14,963,028</b>	<b>18,426,838</b>	<b>21,666,230</b>	<b>24,987,429</b>	<b>27,739,413</b>	<b>30,194,958</b>	<b>32,444,308</b>	

<b>Change in Production</b>													
Wells	(666,241)	(386,499)	(420,474)	(291,771)	(399,258)	(369,393)	(328,224)	(466,467)	(243,644)	(276,290)	(504,574)	(308,994)	(4,661,829)
CLAWA	55,282	333,623	280,508	63,503	213,943	277,219	144,452	(74,973)	(287,542)	(30,656)	170,402	4,733	1,150,494
<b>Total</b>	<b>(610,959)</b>	<b>(52,876)</b>	<b>(139,966)</b>	<b>(228,268)</b>	<b>(185,315)</b>	<b>(92,174)</b>	<b>(183,772)</b>	<b>(541,440)</b>	<b>(531,186)</b>	<b>(306,946)</b>	<b>(334,172)</b>	<b>(304,261)</b>	<b>(3,511,335)</b>
<b>Total (AF)</b>	<b>(14.03)</b>	<b>(1.21)</b>	<b>(3.21)</b>	<b>(5.24)</b>	<b>(4.25)</b>	<b>(2.12)</b>	<b>(4.22)</b>	<b>(12.43)</b>	<b>(12.19)</b>	<b>(7.05)</b>	<b>(7.67)</b>	<b>(6.98)</b>	<b>(80.61)</b>

<b>% Change</b>													
Wells	-35.20%	-27.29%	-26.77%	-20.44%	-26.65%	-24.52%	-23.91%	-34.55%	-18.32%	-22.82%	-37.54%	-26.45%	-27.28%
CLAWA	5.39%	88.09%	46.26%	7.23%	19.11%	16.88%	6.91%	-3.97%	-14.44%	-1.99%	15.33%	0.44%	7.49%
<b>Total</b>	<b>-20.93%</b>	<b>-2.95%</b>	<b>-6.43%</b>	<b>-9.90%</b>	<b>-7.08%</b>	<b>-2.93%</b>	<b>-5.31%</b>	<b>-16.71%</b>	<b>-15.99%</b>	<b>-11.15%</b>	<b>-13.61%</b>	<b>-13.53%</b>	<b>-10.82%</b>

<b>Cummulative Change</b>													
Wells	(666,241)	(1,052,740)	(1,473,214)	(1,764,985)	(2,164,243)	(2,533,636)	(2,861,860)	(3,328,327)	(3,571,971)	(3,848,261)	(4,352,835)	(4,661,829)	
CLAWA	55,282	388,905	669,413	732,916	946,859	1,224,078	1,368,530	1,293,557	1,006,015	975,359	1,145,761	1,150,494	
<b>Total</b>	<b>(610,959)</b>	<b>(663,835)</b>	<b>(803,801)</b>	<b>(1,032,069)</b>	<b>(1,217,384)</b>	<b>(1,309,558)</b>	<b>(1,493,330)</b>	<b>(2,034,770)</b>	<b>(2,565,956)</b>	<b>(2,872,902)</b>	<b>(3,207,074)</b>	<b>(3,511,335)</b>	
<b>Total (AF)</b>	<b>(14.03)</b>	<b>(15.24)</b>	<b>(18.45)</b>	<b>(23.69)</b>	<b>(27.95)</b>	<b>(30.06)</b>	<b>(34.28)</b>	<b>(46.71)</b>	<b>(58.91)</b>	<b>(65.95)</b>	<b>(73.62)</b>	<b>(80.61)</b>	

<b>% Cummulative Change</b>													
Wells	-35.20%	-31.81%	-30.19%	-27.98%	-27.73%	-27.21%	-26.79%	-27.66%	-26.73%	-26.40%	-27.34%	-27.28%	
CLAWA	5.39%	27.68%	33.28%	25.36%	23.62%	21.66%	17.68%	13.43%	8.66%	7.41%	8.03%	7.49%	
<b>Total</b>	<b>-20.93%</b>	<b>-14.08%</b>	<b>-11.66%</b>	<b>-11.22%</b>	<b>-10.30%</b>	<b>-8.75%</b>	<b>-8.10%</b>	<b>-9.39%</b>	<b>-10.27%</b>	<b>-10.36%</b>	<b>-10.62%</b>	<b>-10.82%</b>	

Crestline Village Water District

Change in Customer Water Consumption - Cubic Feet

2013 to 2014

<u>2014 Consumption</u>	<u>Jan</u>	<u>Feb</u>	<u>Mar</u>	<u>Apr</u>	<u>May</u>	<u>Jun</u>	<u>Jul</u>	<u>Aug</u>	<u>Sep</u>	<u>Oct</u>	<u>Nov</u>	<u>Dec</u>	<u>Total</u>
Cubic Feet	1,945,855	1,779,429	1,767,139	1,961,174	2,212,570	2,709,852	2,963,371	2,774,638	2,512,709	2,327,238	2,060,222	1,909,266	26,923,463
<b>Total</b>	<b>1,945,855</b>	<b>1,779,429</b>	<b>1,767,139</b>	<b>1,961,174</b>	<b>2,212,570</b>	<b>2,709,852</b>	<b>2,963,371</b>	<b>2,774,638</b>	<b>2,512,709</b>	<b>2,327,238</b>	<b>2,060,222</b>	<b>1,909,266</b>	<b>26,923,463</b>
<b>2014 Cumulative</b>													
Cubic Feet	1,945,855	3,725,284	5,492,423	7,453,597	9,666,167	12,376,019	15,339,390	18,114,028	20,626,737	22,953,975	22,686,959	24,596,225	51,519,688
<b>Total</b>	<b>1,945,855</b>	<b>3,725,284</b>	<b>5,492,423</b>	<b>7,453,597</b>	<b>9,666,167</b>	<b>12,376,019</b>	<b>15,339,390</b>	<b>18,114,028</b>	<b>20,626,737</b>	<b>22,953,975</b>	<b>22,686,959</b>	<b>24,596,225</b>	<b>51,519,688</b>
<b>2013 Consumption</b>													
Cubic Feet	2,261,012	1,952,389	1,843,970	2,101,256	2,351,113	2,776,689	3,125,809	3,075,879	2,952,319	2,417,952	2,060,523	2,062,910	28,981,821
<b>Total</b>	<b>2,261,012</b>	<b>1,952,389</b>	<b>1,843,970</b>	<b>2,101,256</b>	<b>2,351,113</b>	<b>2,776,689</b>	<b>3,125,809</b>	<b>3,075,879</b>	<b>2,952,319</b>	<b>2,417,952</b>	<b>2,060,523</b>	<b>2,062,910</b>	<b>28,981,821</b>
<b>2013 Cumulative</b>													
Cubic Feet	2,261,012	4,213,401	6,057,371	8,158,627	10,509,740	13,286,429	16,412,238	19,488,117	22,440,436	24,858,388	26,918,911	28,981,821	57,963,642
<b>Total</b>	<b>2,261,012</b>	<b>4,213,401</b>	<b>6,057,371</b>	<b>8,158,627</b>	<b>10,509,740</b>	<b>13,286,429</b>	<b>16,412,238</b>	<b>19,488,117</b>	<b>22,440,436</b>	<b>24,858,388</b>	<b>26,918,911</b>	<b>28,981,821</b>	<b>57,963,642</b>
<b>Change in Consumption</b>													
Cubic Feet	(315,157)	(172,960)	(76,831)	(140,082)	(138,543)	(66,837)	(162,438)	(301,241)	(439,610)	(90,714)	(301)	(153,644)	(2,058,358)
<b>Total</b>	<b>(315,157)</b>	<b>(172,960)</b>	<b>(76,831)</b>	<b>(140,082)</b>	<b>(138,543)</b>	<b>(66,837)</b>	<b>(162,438)</b>	<b>(301,241)</b>	<b>(439,610)</b>	<b>(90,714)</b>	<b>(301)</b>	<b>(153,644)</b>	<b>(2,058,358)</b>
<b>Total (AF)</b>	<b>(7.24)</b>	<b>(3.97)</b>	<b>(1.76)</b>	<b>(3.22)</b>	<b>(3.18)</b>	<b>(1.53)</b>	<b>(3.73)</b>	<b>(6.92)</b>	<b>(10.09)</b>	<b>(2.08)</b>	<b>(0.01)</b>	<b>(3.53)</b>	<b>(47.25)</b>
<b>% Change</b>													
Cubic Feet	-13.94%	-8.86%	-4.17%	-6.67%	-5.89%	-2.41%	-5.20%	-9.79%	-14.89%	-3.75%	-0.01%	-7.45%	-7.10%
<b>Total</b>	<b>-13.94%</b>	<b>-8.86%</b>	<b>-4.17%</b>	<b>-6.67%</b>	<b>-5.89%</b>	<b>-2.41%</b>	<b>-5.20%</b>	<b>-9.79%</b>	<b>-14.89%</b>	<b>-3.75%</b>	<b>-0.01%</b>	<b>-7.45%</b>	<b>-7.10%</b>
<b>Cummulative Change</b>													
Cubic Feet	(315,157)	(488,117)	(564,948)	(705,030)	(843,573)	(910,410)	(1,072,848)	(1,374,089)	(1,813,699)	(1,904,413)	(1,904,714)	(2,058,358)	
<b>Total</b>	<b>(315,157)</b>	<b>(488,117)</b>	<b>(564,948)</b>	<b>(705,030)</b>	<b>(843,573)</b>	<b>(910,410)</b>	<b>(1,072,848)</b>	<b>(1,374,089)</b>	<b>(1,813,699)</b>	<b>(1,904,413)</b>	<b>(1,904,714)</b>	<b>(2,058,358)</b>	
<b>Total (AF)</b>	<b>(7.24)</b>	<b>(11.21)</b>	<b>(12.97)</b>	<b>(16.19)</b>	<b>(19.37)</b>	<b>(20.90)</b>	<b>(24.63)</b>	<b>(31.54)</b>	<b>(41.64)</b>	<b>(43.72)</b>	<b>(43.73)</b>	<b>(47.25)</b>	
<b>% Cummulative Change</b>													
Cubic Feet	-13.94%	-11.58%	-9.33%	-8.64%	-8.03%	-6.85%	-6.54%	-7.05%	-8.08%	-7.66%	-7.08%	-7.10%	
<b>Total</b>	<b>-13.94%</b>	<b>-11.58%</b>	<b>-9.33%</b>	<b>-8.64%</b>	<b>-8.03%</b>	<b>-6.85%</b>	<b>-6.54%</b>	<b>-7.05%</b>	<b>-8.08%</b>	<b>-7.66%</b>	<b>-7.08%</b>	<b>-7.10%</b>	

**Crestline Village Water District**  
**Gallons Per Capita Daily Calculation**

**Calendar 2014**

	<u>Jan</u>	<u>Feb</u>	<u>Mar</u>	<u>Apr</u>	<u>May</u>	<u>Jun</u>	<u>Jul</u>	<u>Aug</u>	<u>Sep</u>	<u>Oct</u>	<u>Nov</u>	<u>Dec</u>	<u>Total</u>
Residential Services with 92325 Zip	2,586	2,582	2,588	2,595	2,598	2,593	2,587	2,600	2,611	2,611	2,618	2,624	
People per Household	2.83	2.83	2.83	2.83	2.83	2.83	2.83	2.83	2.83	2.83	2.83	2.83	2.83
Est. Full-Time Population	7,318	7,307	7,324	7,344	7,352	7,338	7,321	7,358	7,389	7,389	7,409	7,426	7,356
Days Per Month	31	28	31	30	31	30	31	31	30	31	30	31	365
Gallons Water Produced	17,262,172	13,032,329	15,239,737	15,538,989	18,196,155	22,858,573	24,534,684	20,180,681	20,869,297	18,288,884	15,867,870	14,549,266	216,418,638
All Residential Water Usage (CF)	1,742,753	1,586,929	1,553,339	1,696,174	1,876,149	2,193,999	2,431,569	2,260,397	2,142,240	1,971,538	1,777,222	1,675,051	
% Residential Water	89.56%	89.18%	87.90%	86.49%	84.80%	80.96%	82.05%	81.47%	85.26%	84.72%	86.26%	87.73%	85.53%
<b>Gallons Per Capita Daily</b>	<b>76.09</b>	<b>63.70</b>	<b>67.12</b>	<b>70.53</b>	<b>79.84</b>	<b>103.84</b>	<b>108.11</b>	<b>88.47</b>	<b>94.15</b>	<b>79.84</b>	<b>71.39</b>	<b>63.20</b>	<b>80.60</b>
<b>R - Gallons Per Capita Daily</b>	<b>68.15</b>	<b>56.81</b>	<b>59.00</b>	<b>61.00</b>	<b>67.70</b>	<b>84.07</b>	<b>88.70</b>	<b>72.08</b>	<b>80.27</b>	<b>67.64</b>	<b>61.58</b>	<b>55.45</b>	<b>68.94</b>

**Calendar 2013**

Residential Services with 92325 Zip	2,604	2,604	2,591	2,603	2,597	2,592	2,596	2,589	2,580	2,603	2,597	2,592	2,596
People per Household	2.83	2.83	2.83	2.83	2.83	2.83	2.83	2.83	2.83	2.83	2.83	2.83	2.83
Est. Full-Time Population	7,369	7,369	7,333	7,366	7,350	7,335	7,347	7,327	7,301	7,366	7,350	7,335	7,347
Days Per Month	31	28	31	30	31	30	31	31	30	31	30	31	365
Gallons Water Produced	21,832,145	13,427,842	16,286,683	17,246,434	19,582,311	23,548,035	25,909,299	24,230,652	24,842,569	20,584,840	18,367,477	16,825,138	242,683,424
% Residential Water	90.17%	90.02%	86.60%	85.94%	82.54%	82.63%	81.54%	82.97%	84.18%	84.07%	87.74%	88.54%	85.18%
<b>Gallons Per Capita Daily</b>	<b>95.57</b>	<b>65.08</b>	<b>71.65</b>	<b>78.05</b>	<b>85.94</b>	<b>107.01</b>	<b>113.76</b>	<b>106.68</b>	<b>113.42</b>	<b>90.15</b>	<b>83.30</b>	<b>73.99</b>	<b>90.50</b>
<b>R - Gallons Per Capita Daily</b>	<b>86.18</b>	<b>58.58</b>	<b>62.05</b>	<b>67.07</b>	<b>70.94</b>	<b>88.42</b>	<b>92.76</b>	<b>88.51</b>	<b>95.48</b>	<b>75.79</b>	<b>73.09</b>	<b>65.51</b>	<b>77.09</b>
<b>Change R-GPCD 2013-2014</b>	<b>(18.03)</b>	<b>(1.78)</b>	<b>(3.04)</b>	<b>(6.07)</b>	<b>(3.24)</b>	<b>(4.36)</b>	<b>(4.06)</b>	<b>(16.43)</b>	<b>(15.21)</b>	<b>(8.14)</b>	<b>(11.51)</b>	<b>(10.07)</b>	<b>(8.14)</b>
<b>% Change</b>	<b>-20.92%</b>	<b>-3.04%</b>	<b>-4.91%</b>	<b>-9.05%</b>	<b>-4.56%</b>	<b>-4.93%</b>	<b>-4.37%</b>	<b>-18.56%</b>	<b>-15.93%</b>	<b>-10.75%</b>	<b>-15.74%</b>	<b>-15.37%</b>	<b>-10.57%</b>