

**Crestline Village Water District
Source of Supply Production Report
System Loss - Last 13 Months
In Cubic Feet**

10/15/21

	Sep	Oct	Nov	Dec	Jan '21	Feb	Mar	Apr	May	June	July	August	September	Total
Sources of Supply														
Wells	1,724,448	1,520,142	1,573,711	1,397,987	1,479,324	1,385,443	1,441,967	1,318,155	1,196,500	1,330,582	1,067,843	1,193,601	1,055,798	17,685,501
Purchased Water	1,410,963	1,269,277	709,571	795,000	723,155	579,385	747,260	889,987	1,133,850	1,836,191	2,053,852	2,042,792	2,170,359	16,361,642
Adjustment to Wells *	0	0	0	0	0	0	0	0	0	0	0	0	0	0
Total Water Supplied	3,135,411	2,789,419	2,283,282	2,192,987	2,202,479	1,964,828	2,189,227	2,208,142	2,330,350	3,166,773	3,121,695	3,236,393	3,226,157	34,047,143
Water Used **														
Metered Accounts														
Crestline Area	1,512,500	1,419,600	1,336,200	901,339	922,574	967,219	855,194	907,760	1,231,081	1,286,700	1,353,968	1,285,020	1,196,340	15,175,495
Lake Gregory Area	1,458,300	1,293,500	1,109,343	1,148,521	1,046,339	1,025,640	1,042,065	1,073,053	1,433,265	1,302,968	1,594,452	1,451,937	1,307,555	16,286,938
Change in Storage	(25,945)	50,794	(78,318)	56,912	8,304	(20,679)	(16,961)	28,951	(56,105)	23,418	49,596	(100,903)	91,301	10,365
Flushing, System & Other	2,239	88,272	2,327	4,000	0	0	0	18,645	844	22,059	267	5,310	1,504	145,467
Accounted for Water	2,947,094	2,852,166	2,369,552	2,110,772	1,977,217	1,972,180	1,880,298	2,028,409	2,609,085	2,635,145	2,998,283	2,641,364	2,596,700	31,618,265
System Loss (CF)	188,317	(62,747)	(86,270)	82,215	225,262	(7,352)	308,929	179,733	(278,735)	531,628	123,412	595,029	629,457	2,428,878
System Loss (%)	6.0%	-2.2%	-3.8%	3.7%	10.2%	-0.4%	14.1%	8.1%	-12.0%	16.8%	4.0%	18.4%	19.5%	7.1%
System Loss (GPM)	32.6	(10.5)	(14.9)	14.7	40.3	(1.2)	53.5	33.3	(43.9)	92.1	20.0	96.6	102.2	34.6

Month to Month Averaging ***														
System Loss (CF)	96,084	62,785	(74,508)	(2,027)	153,739	108,955	150,789	244,331	(49,501)	126,447	327,520	359,220	100,267	1,604,101
System Loss (%)	3.0%	1.9%	-3.0%	0.0%	7.0%	4.9%	6.9%	11.1%	-1.9%	2.4%	10.4%	11.2%	18.9%	4.7%
System Loss (GPM)	16.3	11.0	(12.7)	(0.1)	27.5	19.6	26.2	43.4	(5.3)	24.1	56.0	58.3	99.4	22.8

Estimated Uses														
Known leaks - Est. loss	22,617	671	2,406	599	7,340	1,080	193	385	0	2,406	134,714	12,811	8,396	193,617
Total Estimated Uses	22,617	671	2,406	599	7,340	1,080	193	385	0	2,406	134,714	12,811	8,396	193,617
Unaccounted for Water (CF)	165,700	(63,418)	(88,676)	81,616	217,922	(8,432)	308,736	179,348	(278,735)	529,222	(11,302)	582,218	621,061	2,235,261
Unaccounted For (%)	5.3%	-2.3%	-3.9%	3.7%	9.9%	-0.4%	14.1%	8.1%	-12.0%	16.7%	-0.4%	18.0%	19.3%	6.6%
Unaccounted For (GPM)	28.7	(10.6)	(15.4)	14.6	39.0	(1.3)	53.5	33.3	(43.9)	91.6	(1.8)	94.5	107.5	31.8
Number of Days in Period	30	31	30	29	29	33	30	28	33	30	32	32	30	365

NOTES:

Estimated - Includes estimated billing period. This month includes estimated consumption. The following billing period will reflect adjustments to actual water used.

* - Currently there are no Adjustments to Wells being made.

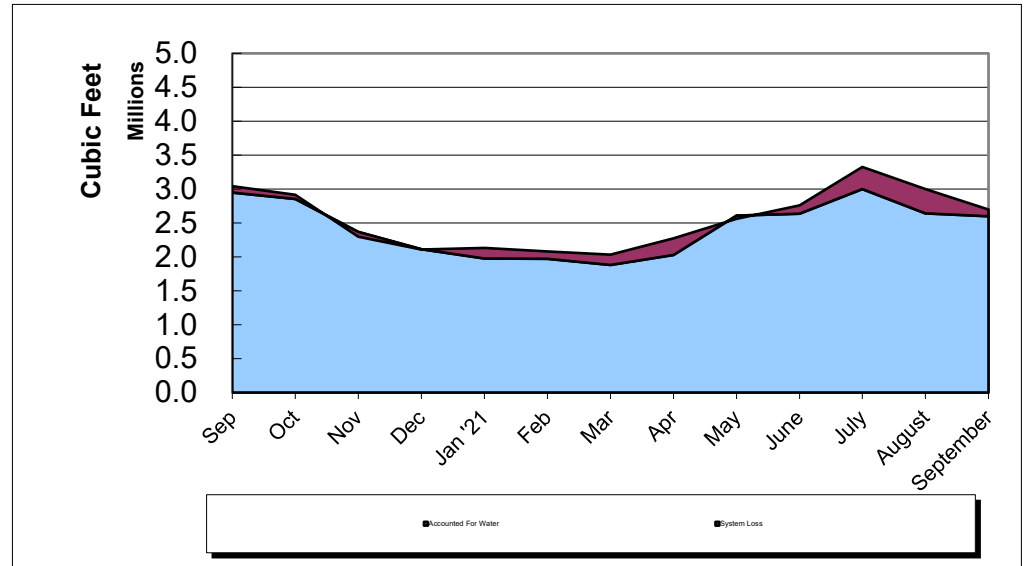
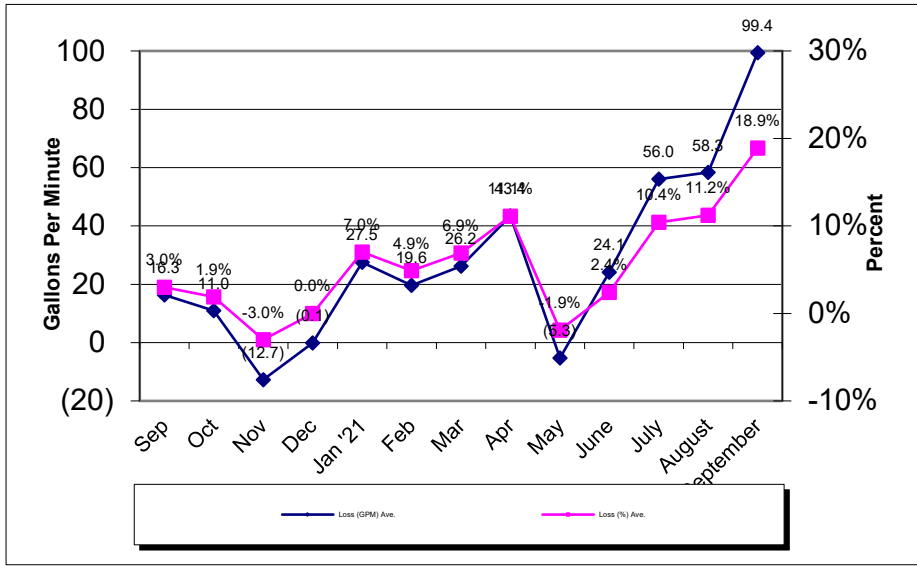
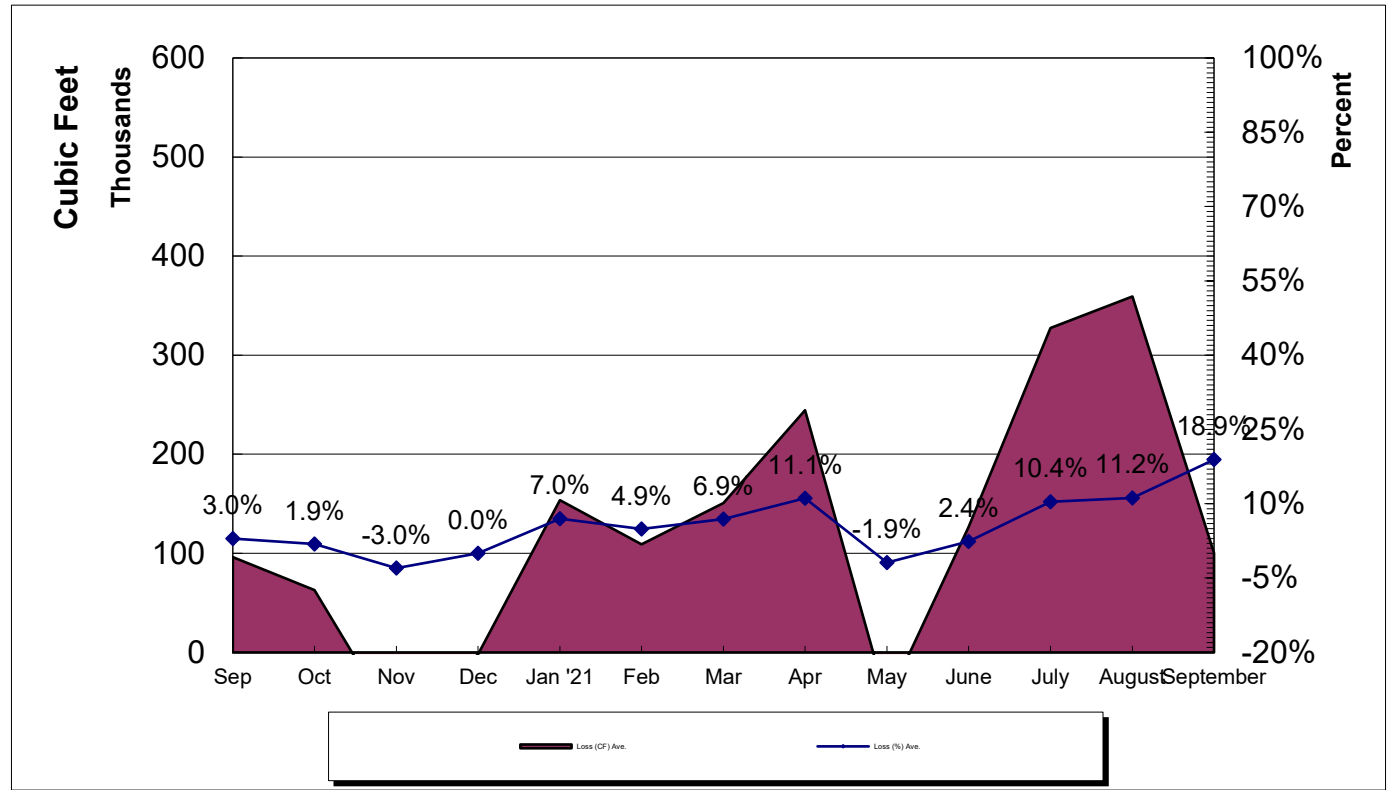
** - Water Used - Metered Accounts is adjusted to the time period in Total Water Supplied

*** - Month to Month averaging averages the System Loss for each period with the immediately prior period for trending purposes.

System Loss Costs	This Month	Average
Cost of System Loss:	\$2,647	\$3,258
Cost of 5% System Loss:	4,259	3,457
Amount above (below) 5% System Loss	(\$1,612)	(\$199)
Note: Cost is calculated at highest cost (CLAWA Rate: \$2.64/100 c.f.)		

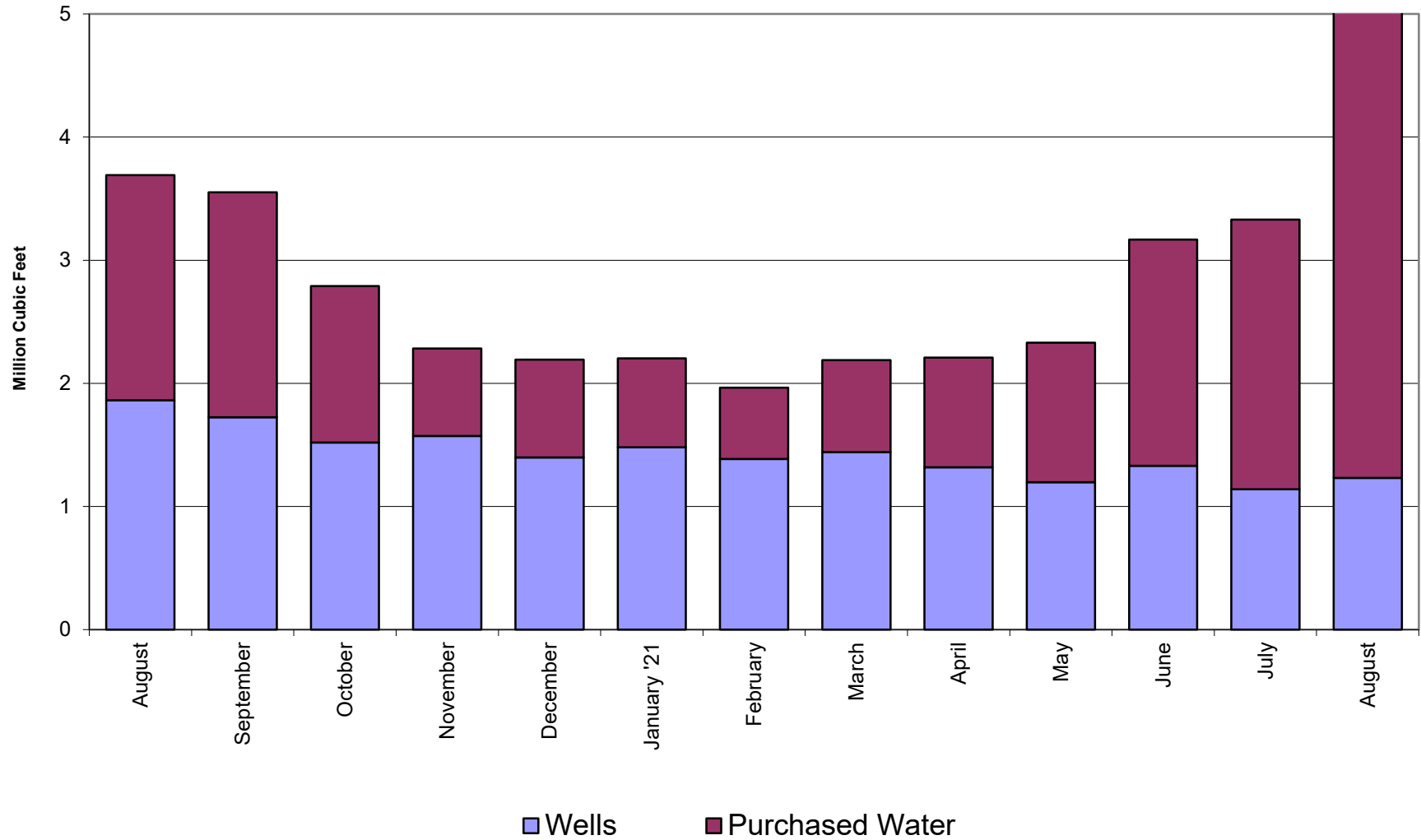
Crestline Village Water District

System Loss Last 13 Months With Month to Month Averaging



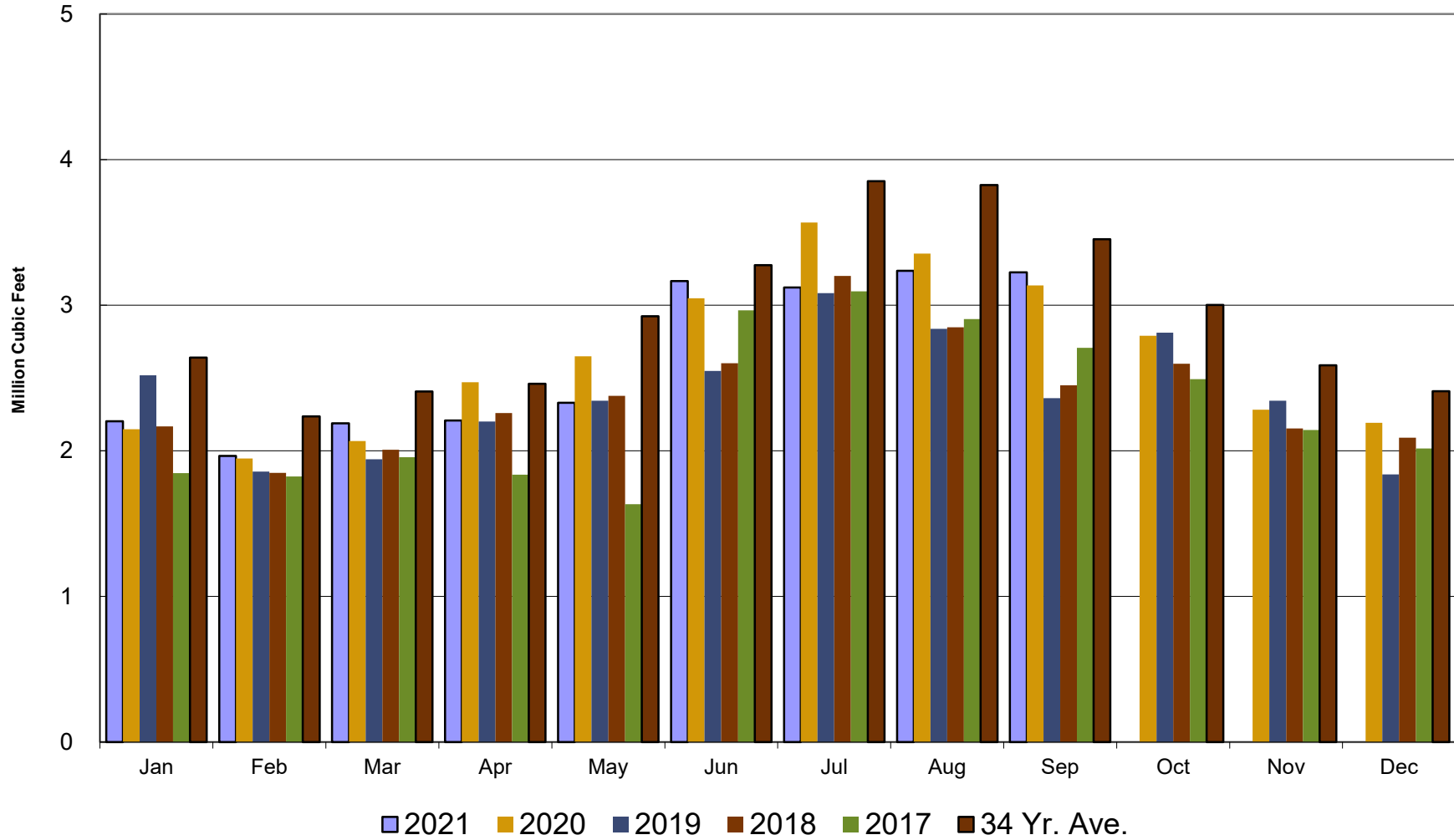
Crestline Village Water District

Water Sources - Last 13 Months



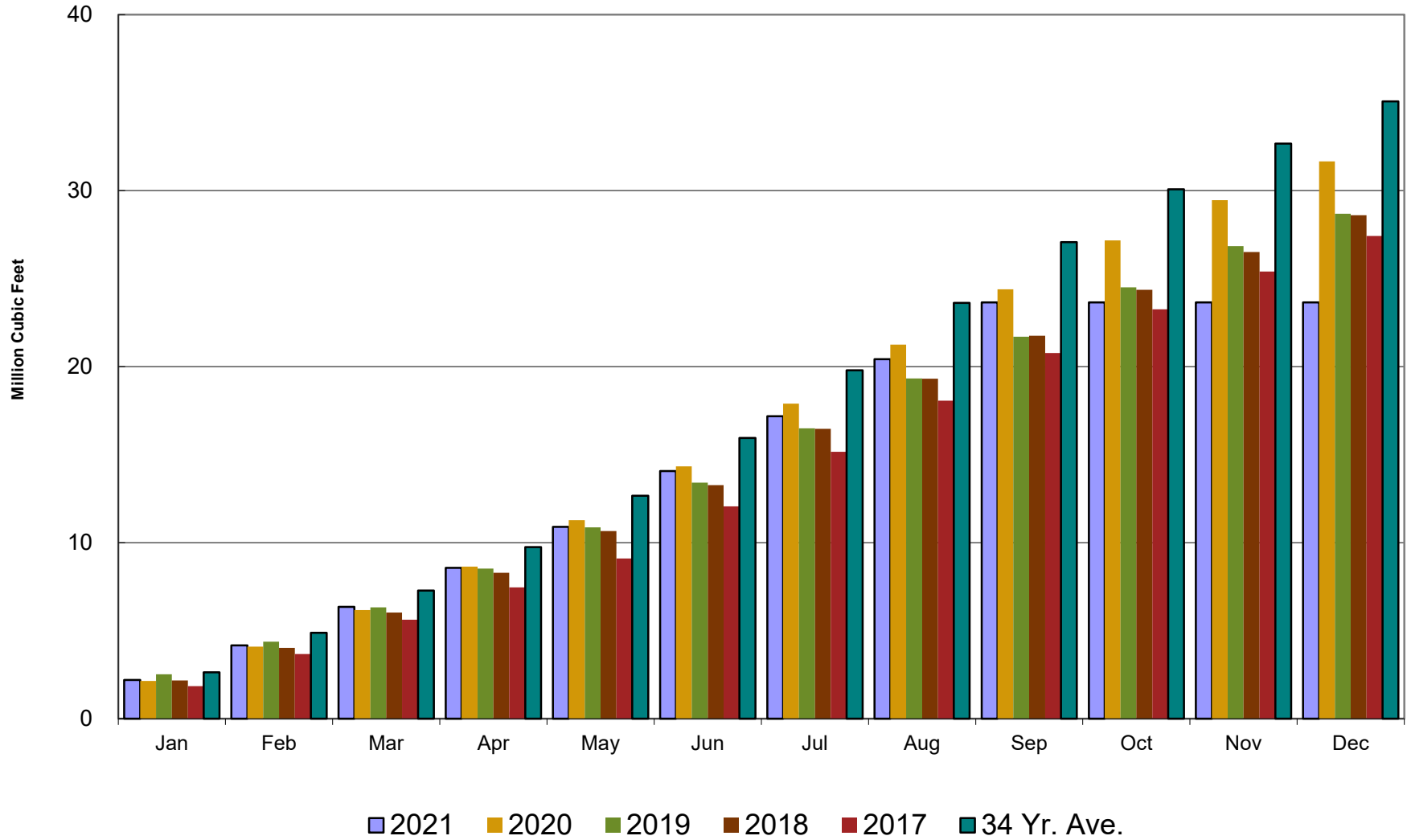
Crestline Village Water District

Total Production by Month



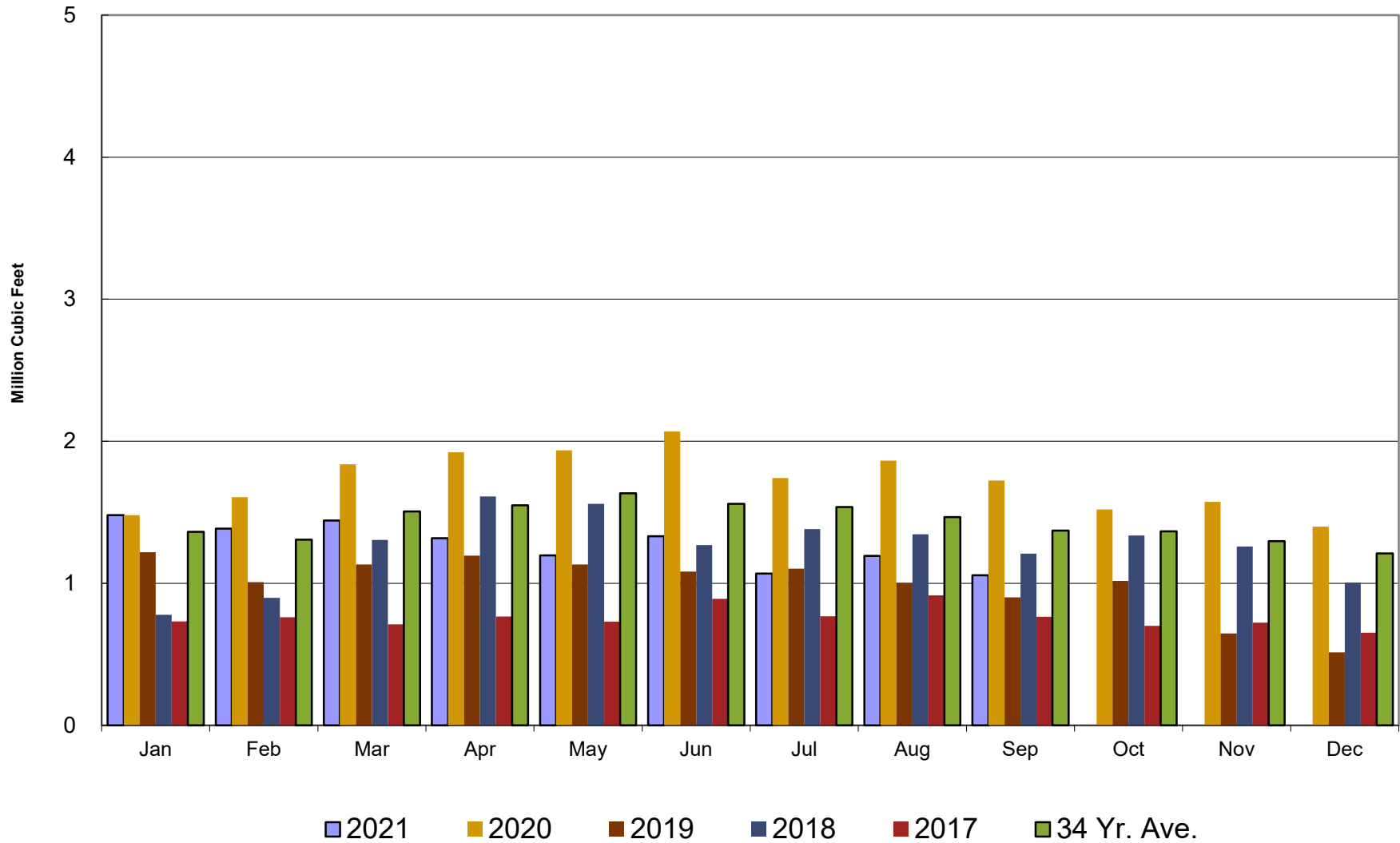
Crestline Village Water District

Total Production Cumulative



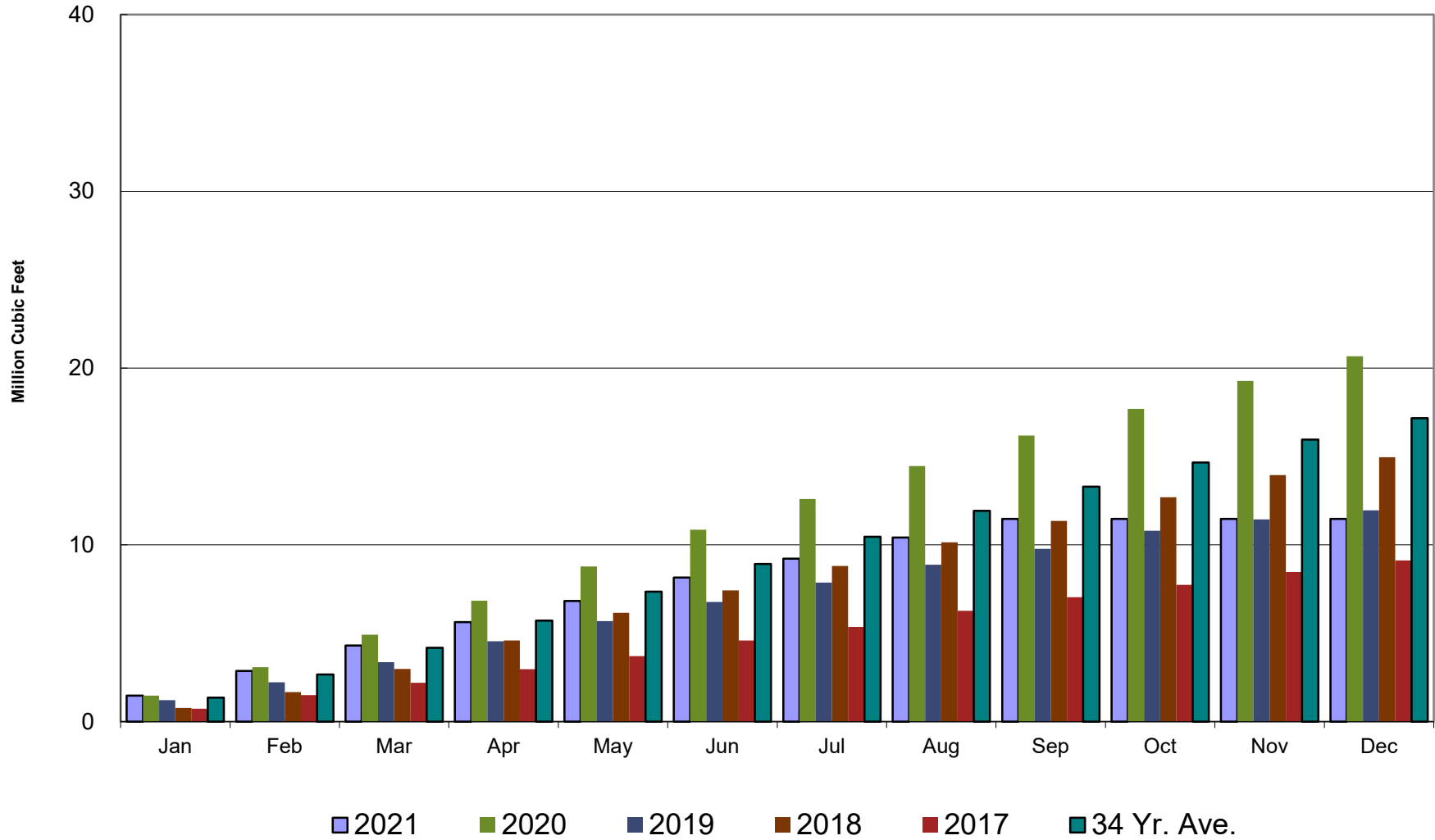
Crestline Village Water District

Well Production by Month



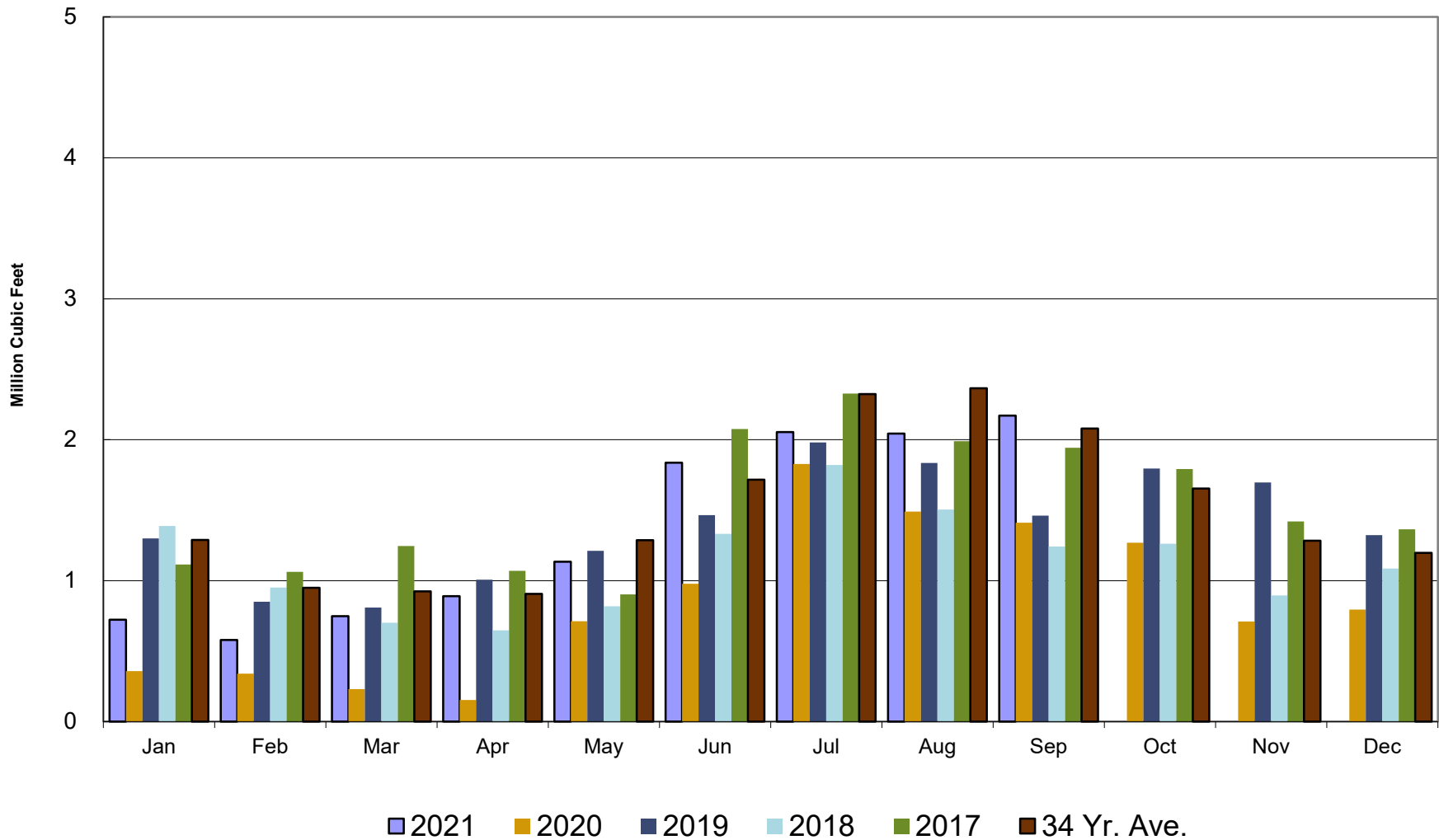
Crestline Village Water District

Well Production Cumulative



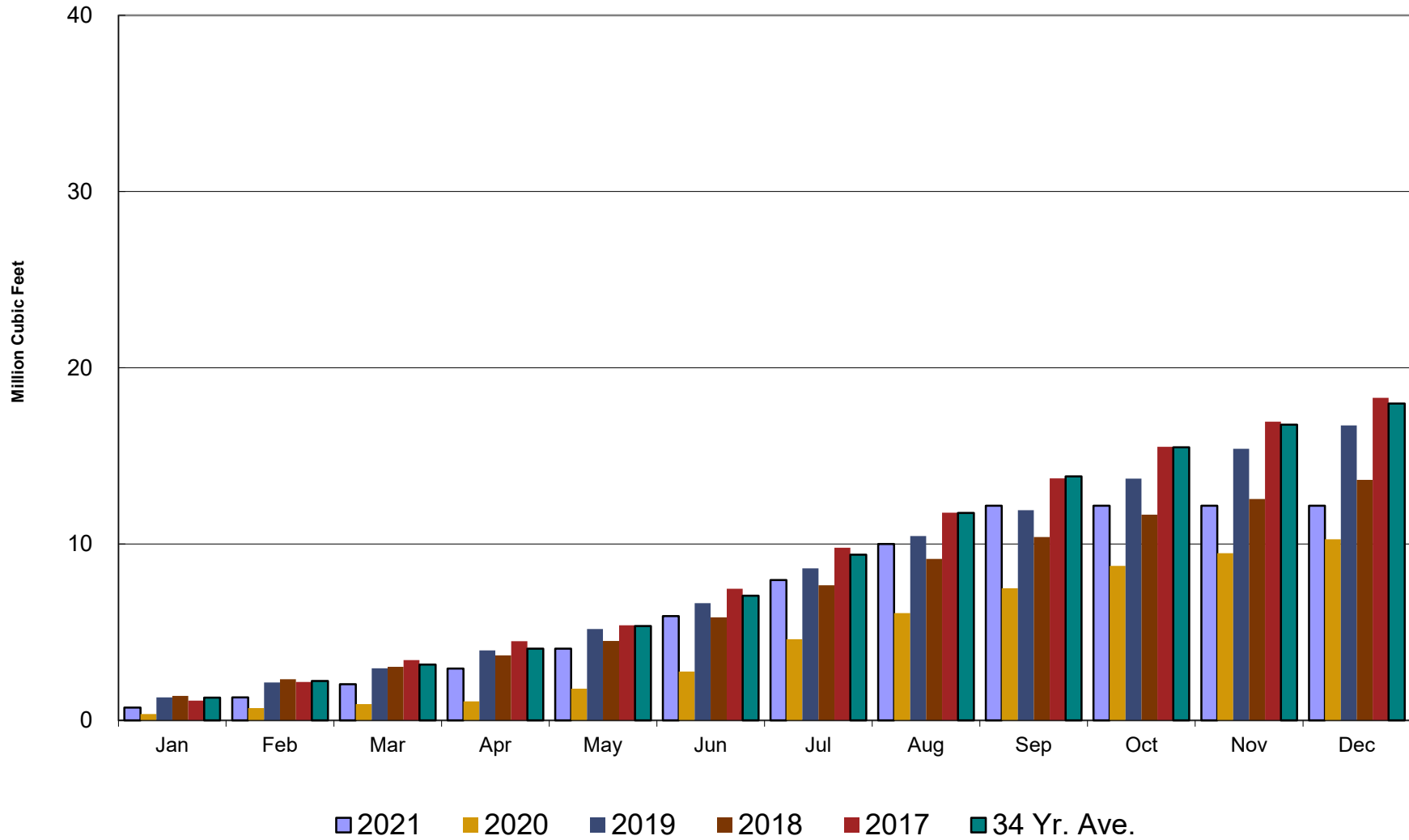
Crestline Village Water District

Purchased Water by Month



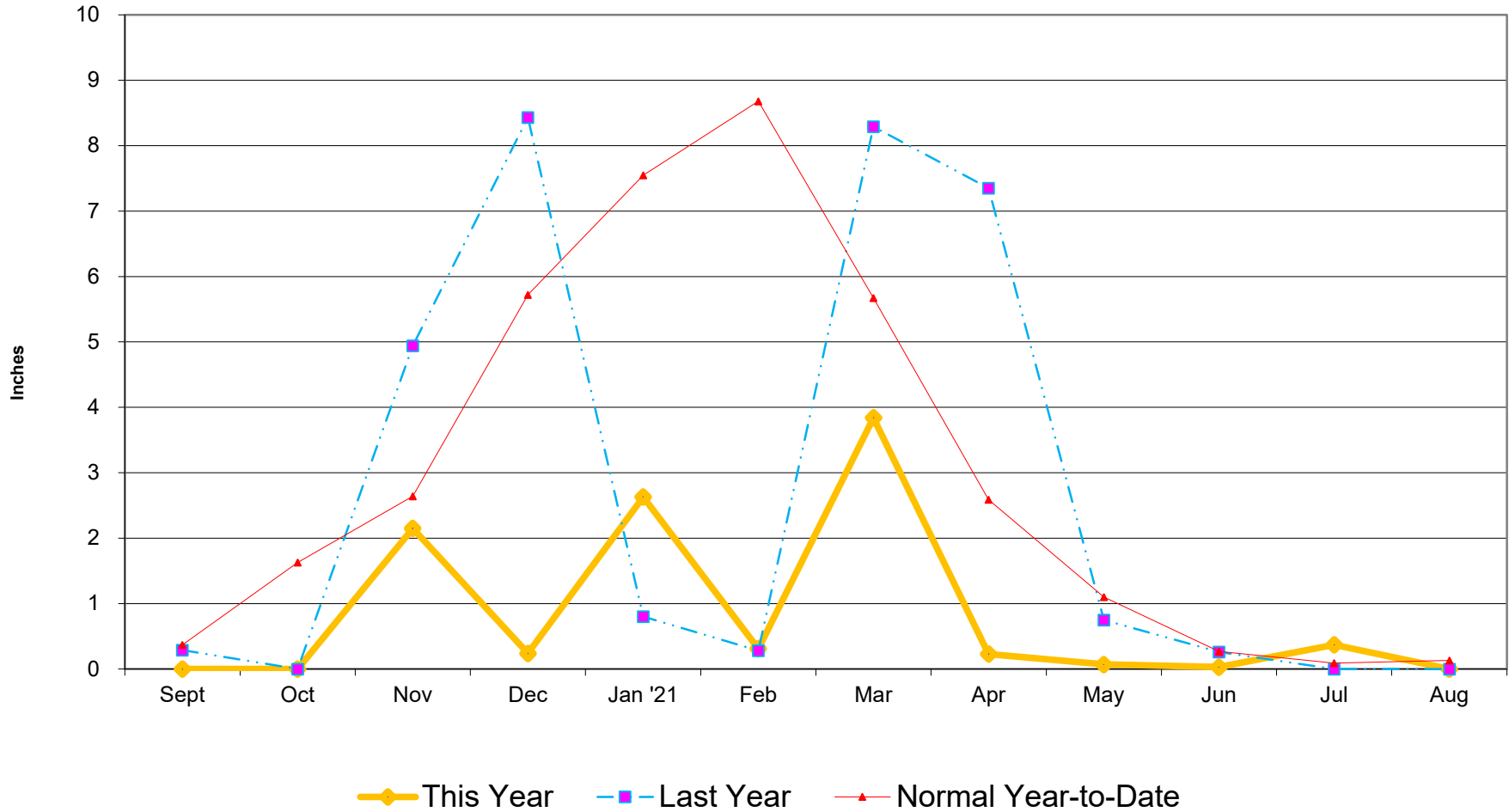
Crestline Village Water District

Purchased Water Cumulative



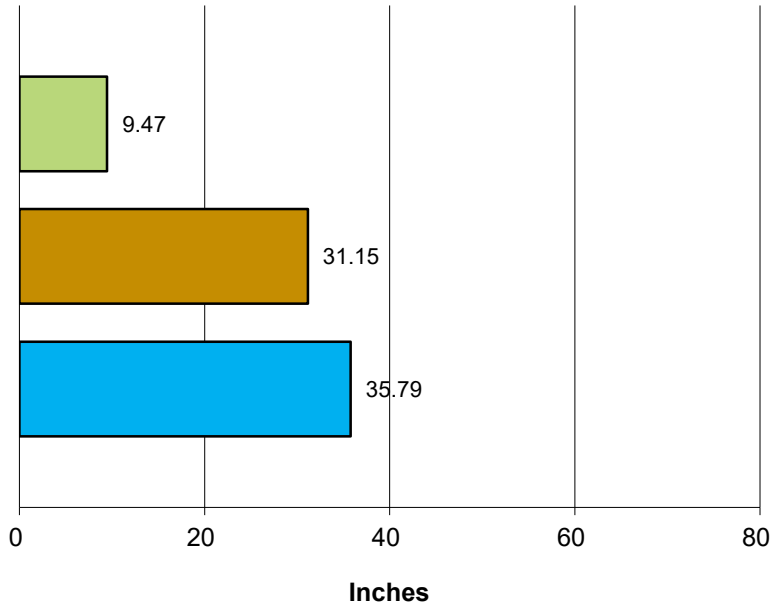
Crestline Village Water District

Rainfall - Last 12 Months



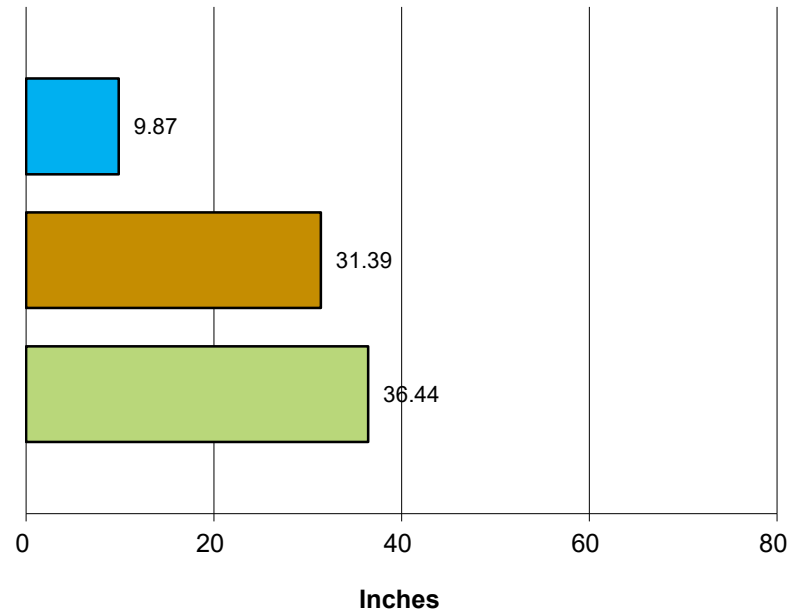
Crestline Village Water District

Total Rainfall July 1, 2020 to Beginning of Current Month



■ This Year ■ Last Year ■ Normal

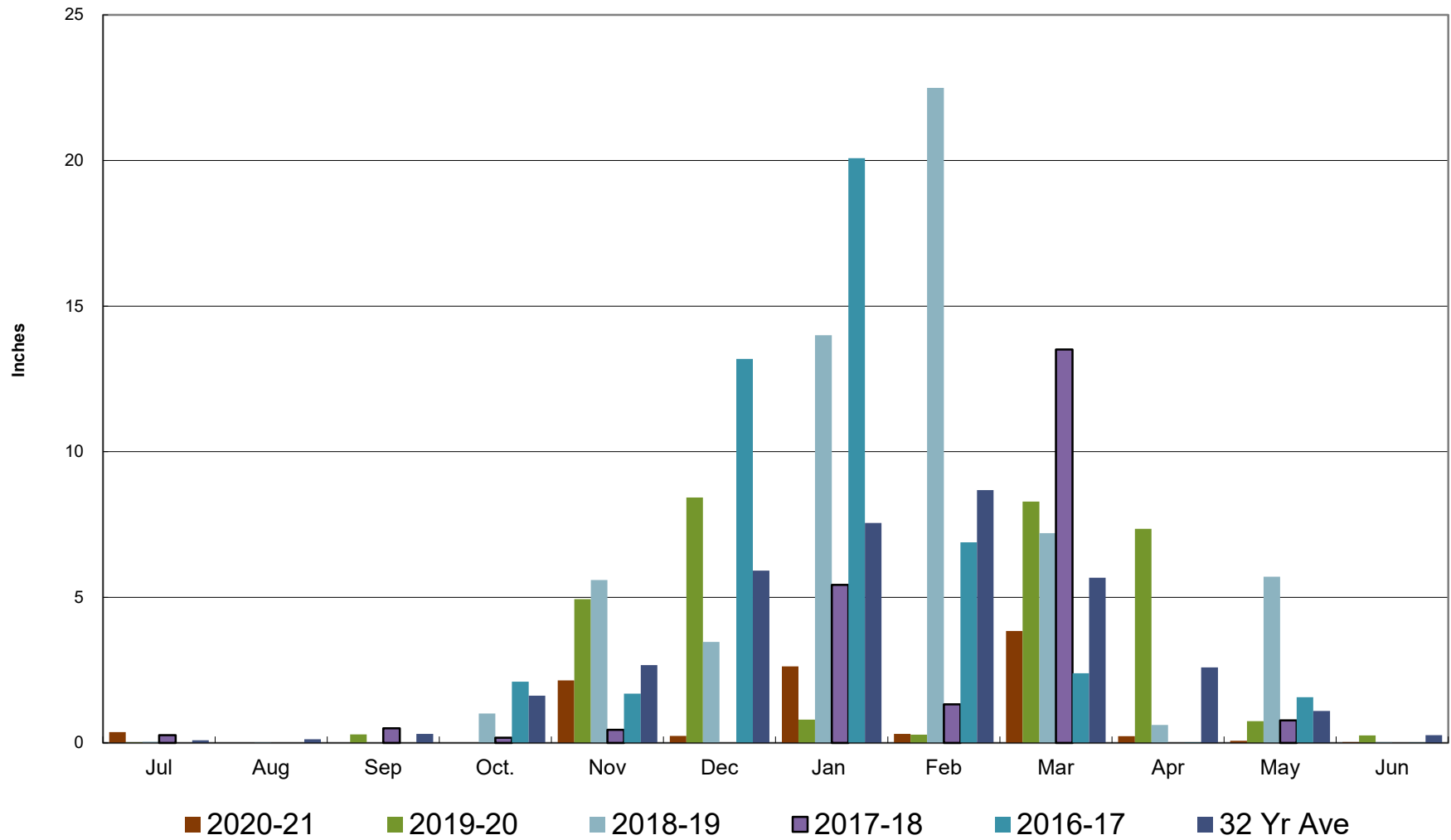
Total Rainfall Last 12 Months



■ This Year ■ Last Year ■ Normal

Crestline Village Water District

Rainfall by Month



Crestline Village Water District

Rainfall Cumulative

